

61104

U.S. PUBLIC LAND SURVEY MONUMENT RECORD - GRANT COUNTY, WI

Section 26, Town 6 North Range 1 West, Town of Wingville (a)

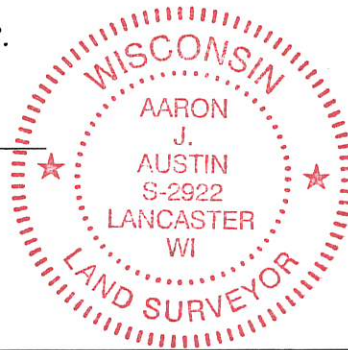
NOTE: This form is intended and designed to fulfill all requirements of the Wisconsin Administrative Code Chapter A-E 7.08, U.S. Public Land Survey Monument Record (3) (a) (b) (c) (d) (e) (f) (g) (h) (i).

CERTIFICATE: (i)

I, Aaron J. Austin, Wisconsin Professional Land Surveyor, do hereby certify that the corner location on this record was determined by me and/or under my direct supervision and that this U.S. Public Land Survey Monument Record is correct and complete to the best of my knowledge and belief.

Dated this 24th day of April, 2018.

Aaron J. Austin
Aaron J. Austin, S-2922



HISTORY OF CORNER ESTABLISHMENT:

Sibley set the original corner in 1833.
Larry Austin set a 1" Rebar with a Grant County Aluminum Cap at the corner and prepared a Survey Monument Record dated 10-29-1999.

DESCRIPTION OF CORNER EVIDENCE FOUND: (b) (f) (g) (h)

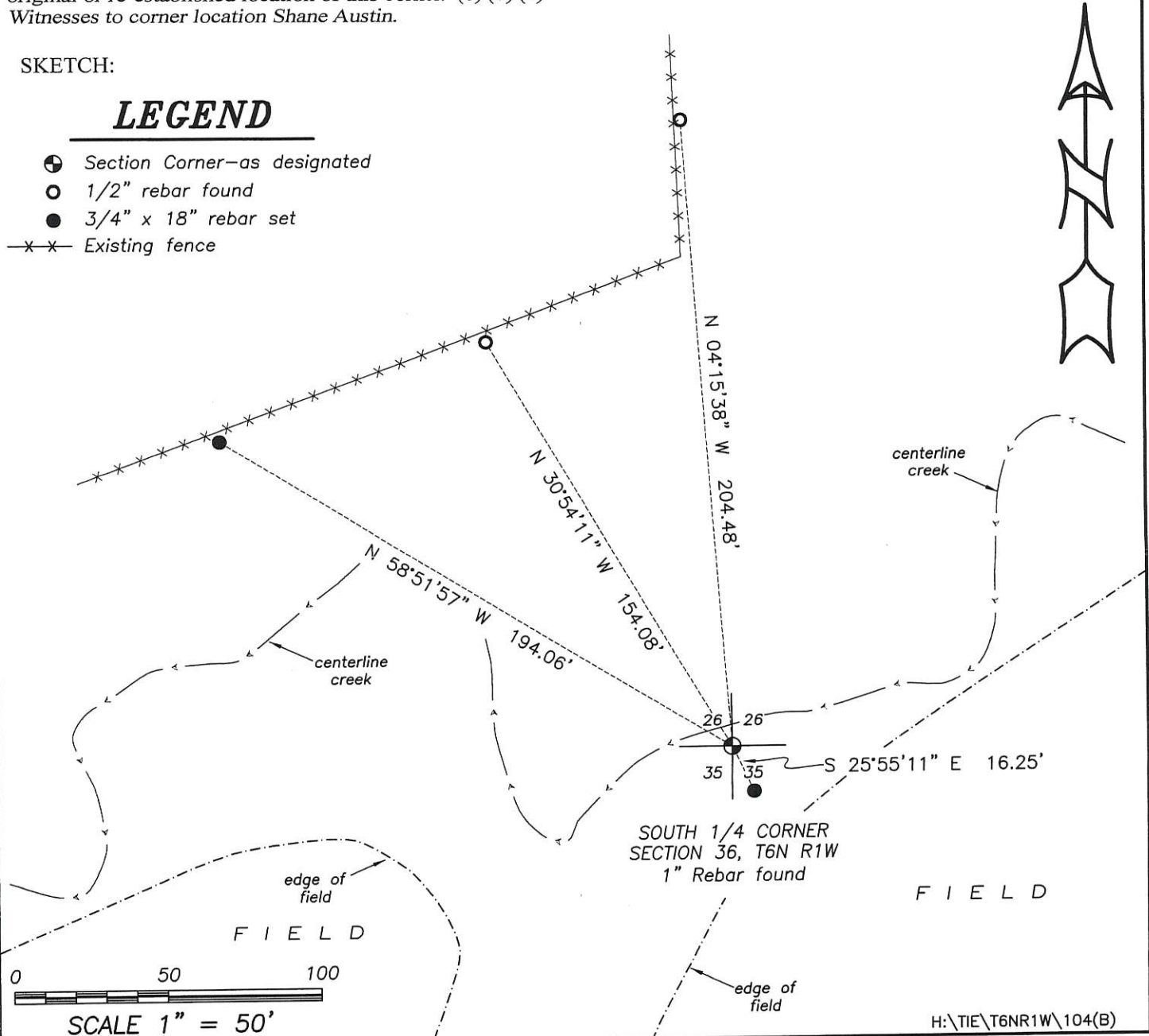
I found the monument set by Larry Austin and two of his witness corners. I set two additional witness corners after I verified it's location with G.P.S. and E.D.M. methods

DESCRIPTION OF CORNER AND WITNESS MONUMENTS, references and accessories used to perpetuate the original or re-established location of this corner. (c) (d) (e)
Witnesses to corner location Shane Austin.

SKETCH:

LEGEND

- ⊕ Section Corner—as designated
- 1/2" rebar found
- 3/4" x 18" rebar set
- *- Existing fence



GRANT COUNTY CERTIFIED LAND CORNER

CERTIFICATE:

I, LARRY L. AUSTIN, DO HEREBY CERTIFY THAT ON 25th DAY OF OCTOBER, 1999, I FOUND NO EVIDENCE OF THE NORTH 1/4 CORNER OF SECTION 104, TOWN 6 NORTH, RANGE 1 WEST, OF THE FOURTH PRINCIPAL MERIDIAN, AND I RE-ESTABLISHED SAID CORNER ACCORDING TO THE WISCONSIN STATUTES AS SHOWN AND DESCRIBED HEREON.

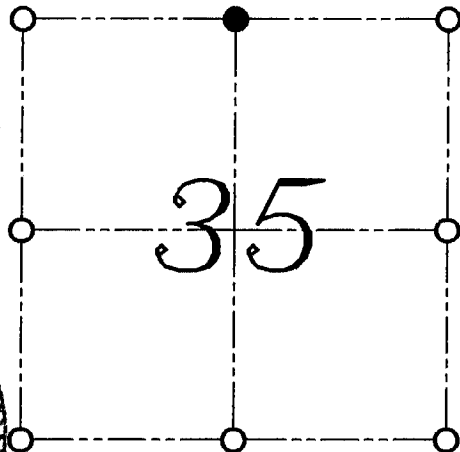
DATED THIS 29th DAY OF OCTOBER, 1999

Larry L. Austin
LARRY L. AUSTIN S-1903



SEAL

CORNER NUMBER 104



● = CORNER LOCATION

NORTH 1/4 CORNER OF
SECTION 35, T 6 N R 1 W
TOWN OF WINGVILLE

HISTORY OF ORIGINAL CORNER ESTABLISHMENT:

CORNER WAS SET IN 1833 BY SIBLEY.
NO OTHER RECORD OF THE CORNER WAS FOUND.

DESCRIPTION OF CORNER EVIDENCE FOUND:

I FOUND NO EVIDENCE OF THE CORNER LOCATION.
I SET THE CORNER MIDWAY ONLINE BETWEEN NORTHWEST AND NORTHEAST
CORNERS. VERIFIED THIS LOCATION USING E.D.M. AND G.P.S. METHODS.

**DESCRIPTION OF CORNER AND WITNESS MONUMENTS, REFERENCES AND ACCESSORIES
USED TO PERPETUATE THE ORIGINAL OR RE-ESTABLISHED LOCATION OF THIS CORNER:**
WITNESS TO THE CORNER LOCATION: BOBBY SEDGWICK ; SHELBY BLINDERT

SKETCH:

LEGEND

- NUMBER 8 X 30" REBAR SET WITH GRANT COUNTY ALUMINUM CAP
- NUMBER 4 X 24" REBAR SET WITH RED PLASTIC CAP
- ** EXISTING FENCE LOCATION

