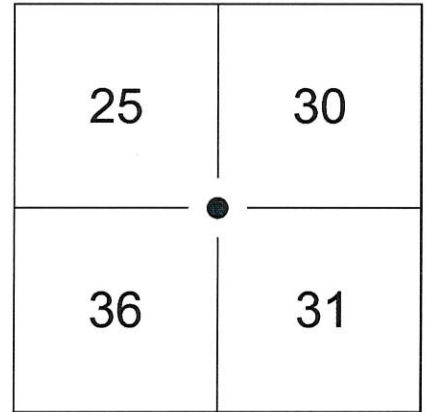


61101

FOR GRANT COUNTY, WISCONSIN U.S. PUBLIC LAND SURVEY MONUMENT RECORD

Note: This form is intended and designed to fulfill all requirements of Wisconsin Administrative Code, Chapter AE-7.08, U.S. Public Land Survey Monument Record (3)(a)(b)(c)(d)(e)(f)(g)(h)(i). Use additional sheets if necessary.

(a) The Section corner common to Sections 25 and 36, Township 6 North, Range 1 West, 4th Principal Meridian and Sections 30 and 31, Township 6 North, Range 1 East, 4th Principal Meridian
Rectangular Coordinate System: Wisconsin State Plane Coordinate System, South Zone
Grid Coordinates: Y: 1,853,809.02' X: 349,728.26'



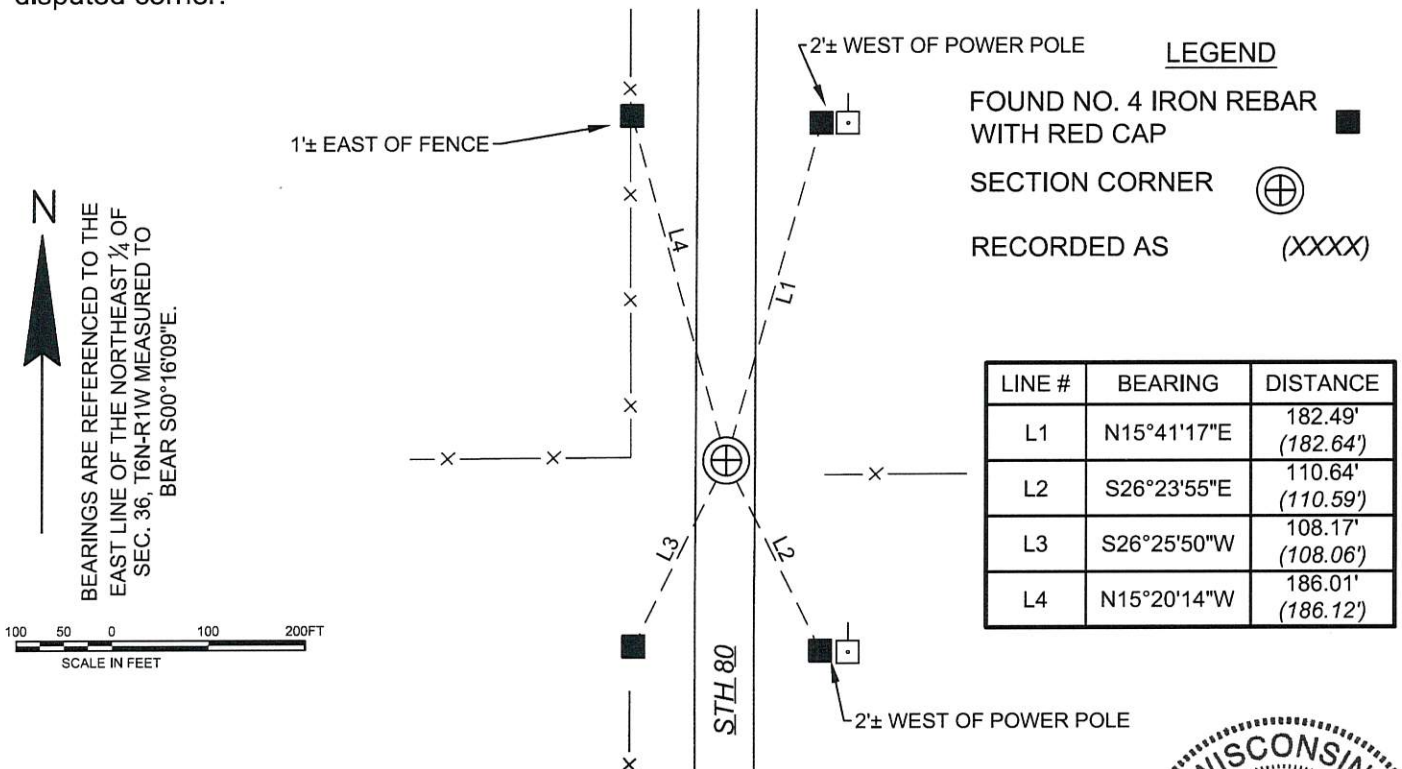
Horizontal Datum: NAD83(2011)

(b)(f)(g)(h) Description of monument found at this corner and if it was accepted, state all evidence (material, testimonial, occupational, plats records, other monuments) used as a basis for accepting. If not accepted or nothing was found, state evidence used as basis for establishing location and what was set. If re-established through lost corner proportionate methods, indicate all monuments, distances and directions used.

November 9, 2004 - Larry L. Austin found an Aluminum Monument in manhole and established witness monuments.

December 20, 2017 - Ayres Associates found a cotton gin spike in the asphalt of State Highway 80 and all four witness monuments. No evidence of the Aluminum Monument in manhole was found. Accepted the cotton gin spike as the corner location and tied as shown.

(c)(d)(e) Plan view of corner with ties to at least four (4) witness monuments. If in disagreement with previously established corner, show the distances between the two corners and also indicate ties to disputed corner.



(I) Certify that the corner location on this record was determined by me or under my direction and control and that this U.S. Public Land Survey Monument Record is correct and complete to the best of my knowledge and belief.



Christopher R. Badtke
Christopher R. Badtke, WI Professional Land Surveyor S-3150 Date 1-8-2018

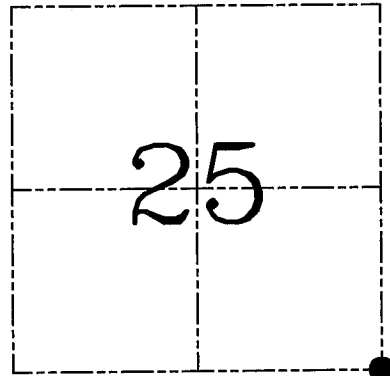
U.S. PUBLIC LAND SURVEY MONUMENT RECORD – GRANT COUNTY, WI
Section 25, Town 6 North Range 1 West, Town of Wingville

CERTIFICATE

I, Larry L. Austin, do hereby certify that the corner location on this record was determined by me and/or under my direct supervision and that this U.S. public land survey monument record is correct and complete to the best of my knowledge and belief.

Dated this 9th day of November, 2004

Larry L. Austin
 Larry L. Austin S-1903



● = CORNER LOCATION

HISTORY OF CORNER ESTABLISHMENT

Corner was originally set in 1832 by Sibley. Bowden found an existing Aluminum monument in concrete in 2003. No other record of the corner was found.

DESCRIPTION OF CORNER EVIDENCE FOUND

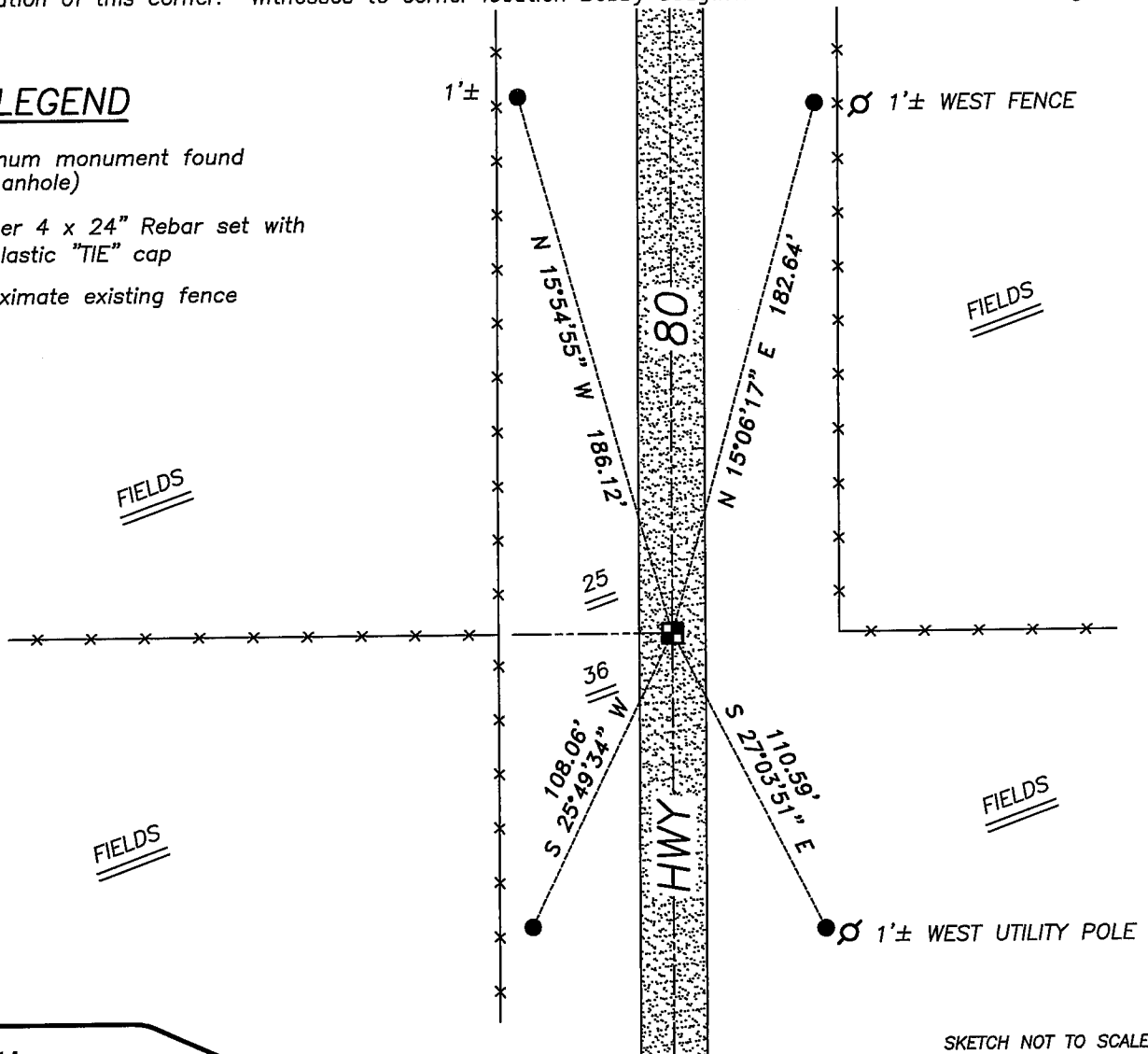
I found the existing Aluminum monument and accepted it's location after an EDM & GPS traverse of the area.

DESCRIPTION OF CORNER AND WITNESS MONUMENTS, references and accessories used to perpetuate the original or re-established location of this corner. Witnesses to corner location Bobby Sedgwick & Shane Austin & Brad Digman

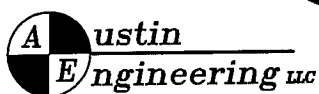
SKETCH:

LEGEND

- Aluminum monument found (in manhole)
- Number 4 x 24" Rebar set with red plastic "TIE" cap
- x— Approximate existing fence



SKETCH NOT TO SCALE



4211 HWY 81 E, LANCASTER, WI 53813
 PHONE 608-723-6363 FAX 608-723-6702

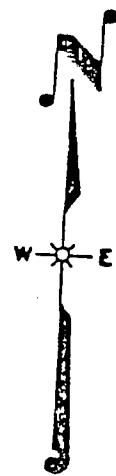
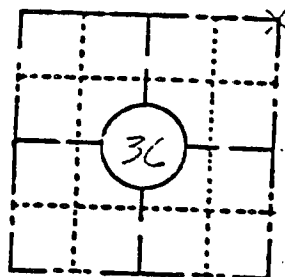
JOB NUMBER 04S263
 FIELDBOOK: TSDR, 2217
 G:\T6NR1W\25
 H:\TIE\T6NR1W\82

DRAWN BY: SW AUSTIN
 APPROVED: LL AUSTIN

FIELD SURVEY NOTES
PRESERVATION OF LANDMARKS
 (Pursuant to Section 59.635(7) Wisconsin Statutes)

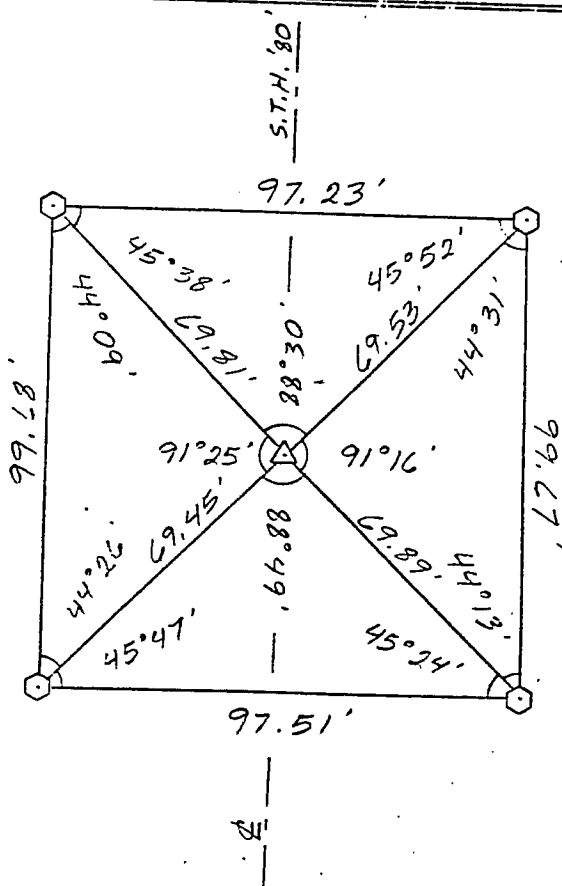
Wisconsin Highway Commission of Wisconsin
 Form E-D-707-65

COUNTY GRANT		
TOWN WINGVILLE		
HIGHWAY S.T.H. '80'		
SECTION 36	TOWNSHIP T 6 N	RANGE R 1 W
TYPE OF LANDMARK SECTION CORNER MONUMENT		

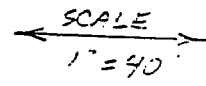


LOCATION SKETCH
 (Location of landmark indicated by "x")

This space for copy of field notes or ties to the above described landmarks



5035-00-71, 5996-02-11
 0022-74-00
 Platteville - Montfort
 Water Street, City
 Structures B-22-7
 STH 80, Grant & Wingville
 Payne & Dolan, Inc.



- = REFERENCE MONUMENT
- = RIGHT OF WAY POST
- = WITNESS POST
- = SECTION CORNER LOCATION

COUNTY CLERK'S OFFICE	
COUNTY OF	WISCONSIN 53
DATE RECEIVED FOR RECORD	DATE COPY SENT TO COUNTY SURVEYOR
SIGNATURE OF COUNTY CLERK	