

# U.S. PUBLIC LAND SURVEY MONUMENT RECORD - GRANT COUNTY, WI

Section 25, Town 6 North Range 1 West, Town of Wingville(a)

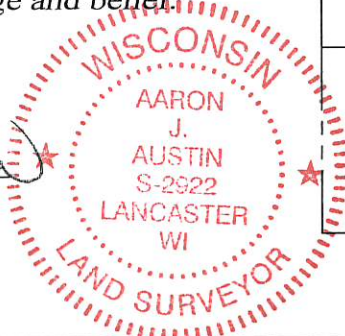
NOTE: This form is intended and designed to fulfill all requirements of the Wisconsin Administrative Code Chapter A-E 7.08, U.S. Public Land Survey Monument Record (3) (a) (b) (c) (d) (e) (f) (g) (h) (i).

**CERTIFICATE:** (i)

I, Aaron J. Austin, Wisconsin Professional Land Surveyor, do hereby certify that the corner location on this record was determined by me and/or under my direct supervision and that this U.S. Public Land Survey Monument Record is correct and complete to the best of my knowledge and belief.

Dated this 5th day of October, 2017.

*Aaron J. Austin*  
Aaron J. Austin, S-2922



● = CORNER LOCATION

HISTORY OF CORNER ESTABLISHMENT:

Mathew Janiak prepared a Survey Monument Record dated 7/11/1983.  
Timothy Moore prepared a Survey Monument Record dated 8/3/1987.  
Bruce Bowden prepared a Survey Monument Record dated 9/21/1998.

DESCRIPTION OF CORNER EVIDENCE FOUND: (b) (f) (g) (h)

I found a P.K. nail set in the location of the corner. I found two witness corners and established two more after I verified the monument's location with G.P.S. and E.D.M. methods.

DESCRIPTION OF CORNER AND WITNESS MONUMENTS: references and accessories used to perpetuate the original or re-established location of this corner. (c) (d) (e)

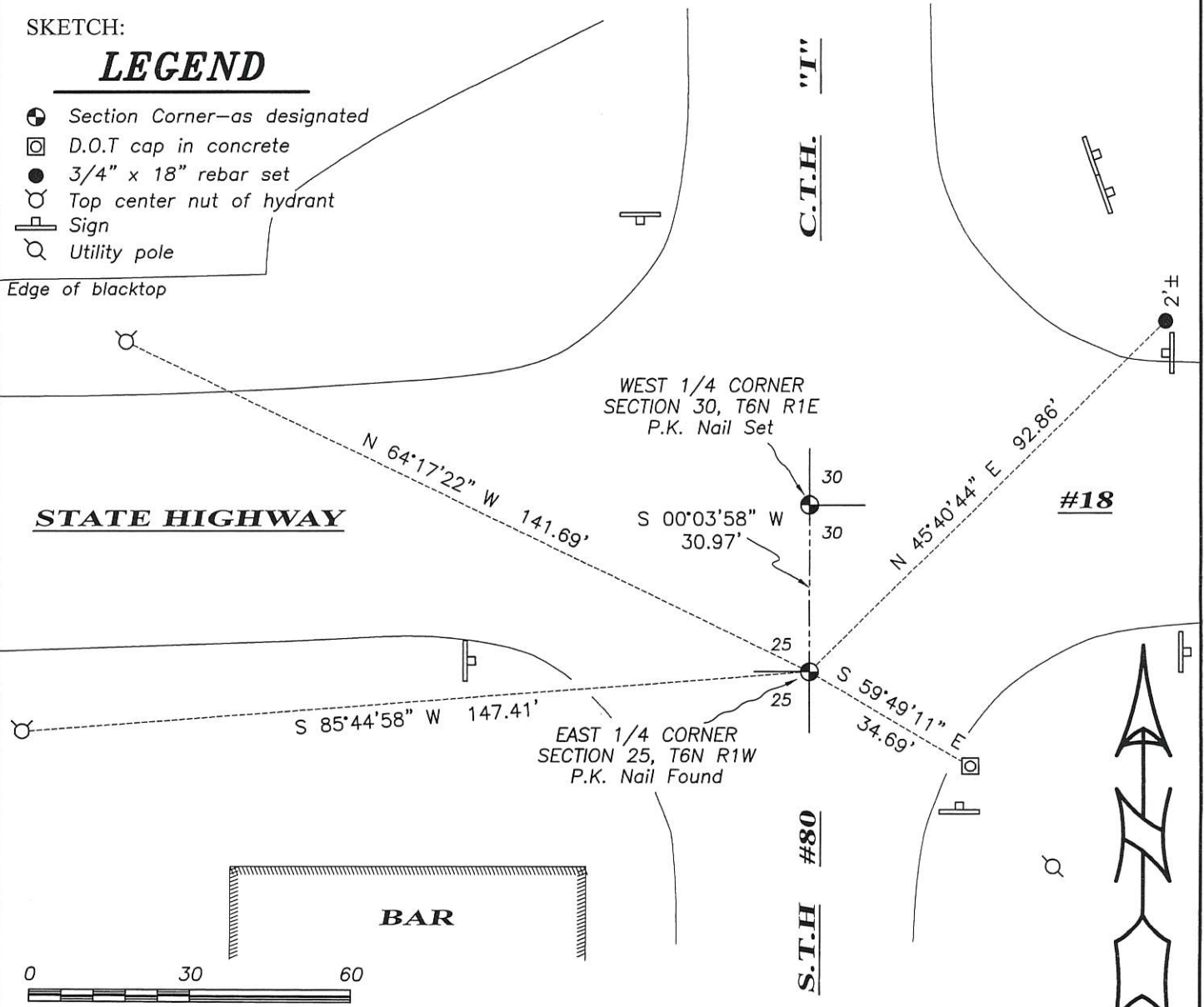
Witnesses to corner location Shane Austin, Owen Austin. Drawn by Owen Austin.

SKETCH:

## LEGEND

- Section Corner—as designated
- D.O.T cap in concrete
- 3/4" x 18" rebar set
- ⊕ Top center nut of hydrant
- ▭ Sign
- Utility pole

Edge of blacktop



SCALE 1" = 30'

U. S. PUBLIC LAND SURVEY MONUMENT RECORD

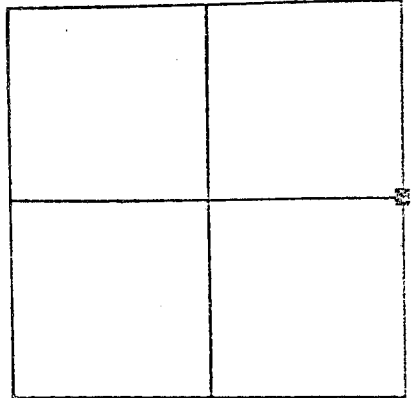
Grant County, Wisconsin.

Basis for monument location.

Researched Grant County Survey Records for information regarding this corner. Upon investigation of the area where the corner was located I found a P.K. nail marking the corner. This location matches all information and occupied lines. I accepted this point as the corner.

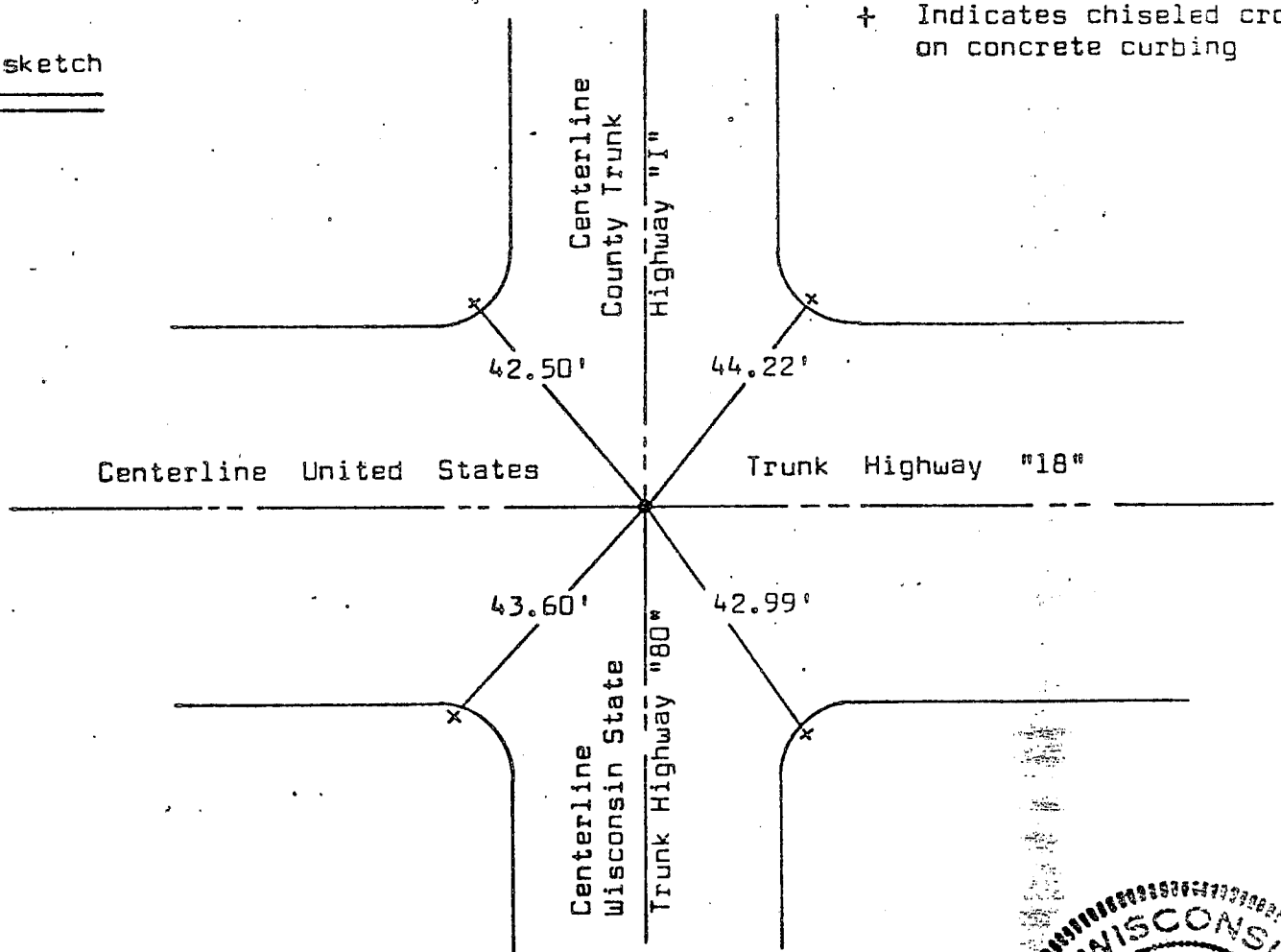


Section 25, T6N, R1W



Corner Location  
(Indicate by - ■)

Tie sketch



I, Matthew J. Janiak Certify that the corner location shown hereon this record was determined by me or under my direction and control and that this U. S. Public Land Survey Monument Record is correct and complete to the best of my knowledge and belief.



July 11, 1983  
Date A

Matthew J. Janiak  
Registered Land Surveyor



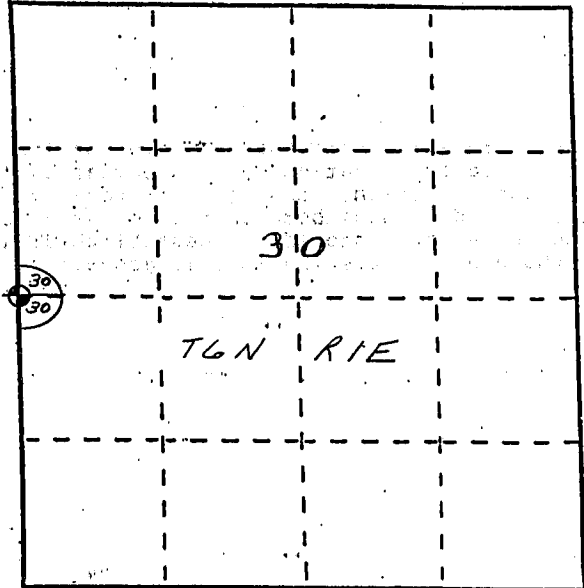
# U. S. PUBLIC LAND SURVEY MONUMENT RECORD

**INSTRUCTIONS:** This record shall show the location of the corner and shall include all of the following nine elements (a through i).

- (a) Identify the corner by reference to the U.S. public land survey system.

○ = Corner monument restored.

*The West Quarter Corner of  
Section 30, Town 6 North,  
Range 1 East, Eden Township,  
Iowa County, Wisconsin.*

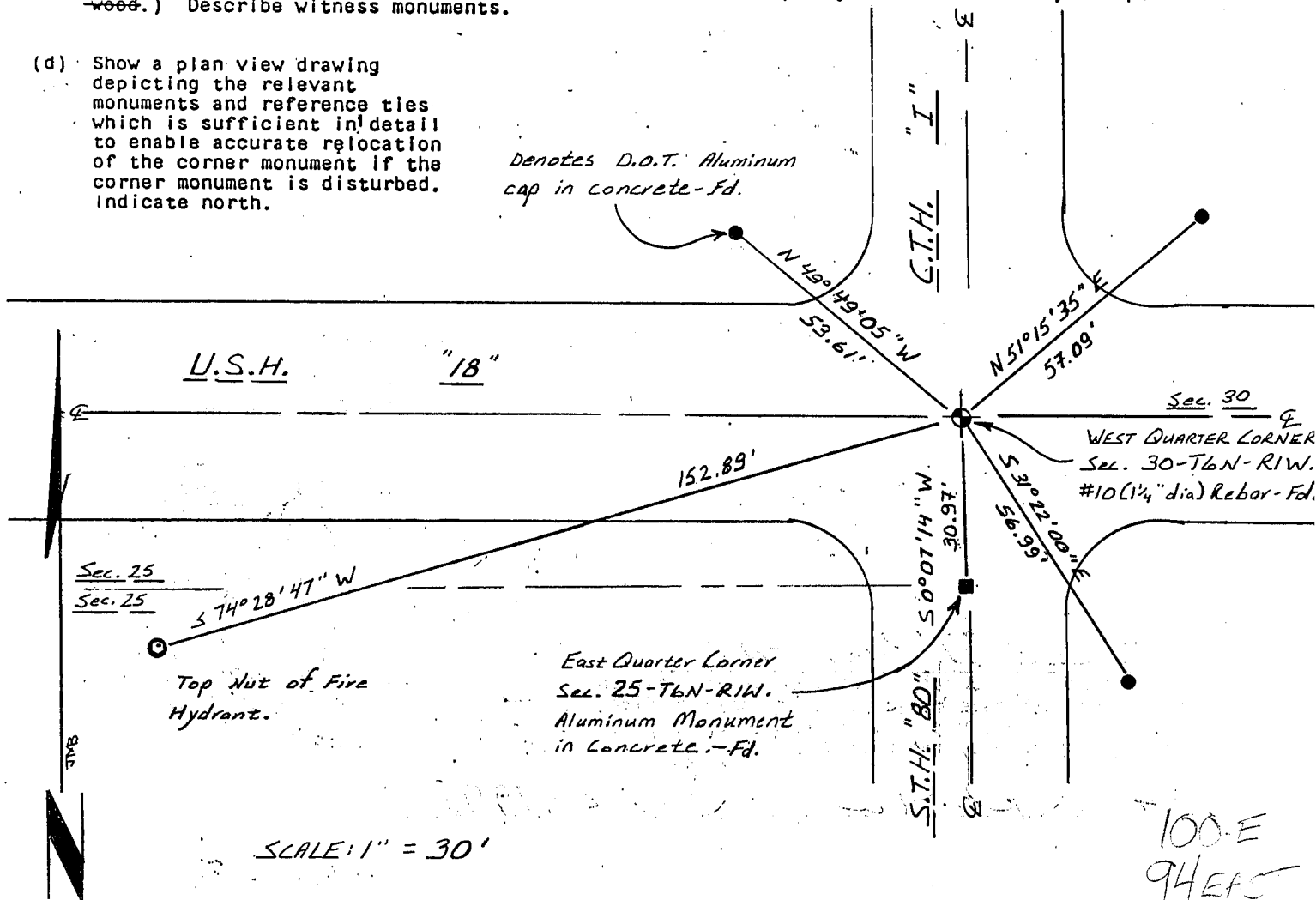


- (b) Describe any record evidence, monument evidence, occupational evidence, testimonial evidence or any other material evidence you considered, and whether the monument was found or placed.

*A # 10 rebar was found and accepted and referenced to existing witness monuments from a Timothy James Moore tie sheet dated 8/3/87.*

- (c) In the plan view drawing below, provide reference ties to at least 4 witness monuments, or, if the location is within a municipality, to at least 2 witness monuments. (Witness monuments shall be made of concrete, natural stone, iron or other equally durable material, ~~except wood.~~) Describe witness monuments.

- (d) Show a plan view drawing depicting the relevant monuments and reference ties which is sufficient in detail to enable accurate relocation of the corner monument if the corner monument is disturbed. Indicate north.



- (e) Describe any material discrepancy between the location of the corner as restored or reestablished and the location of that corner as previously restored or reestablished by distance and direction. Show the discrepancy on the plan view drawing under (d), above. Show the distances between the corner as previously restored or reestablished and (1) the corner as restored or reestablished, and (2) to at least 2 of the witness monuments shown on the drawing in (d), above.

*None.*

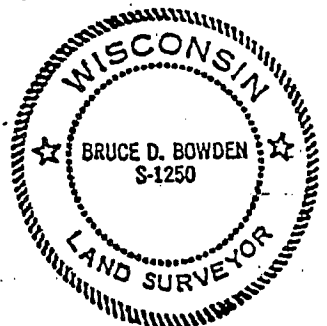
- (f) Was the corner restored through acceptance of (1) an obliterated evidence location, or, (2) a found perpetuated location?

*A found perpetuated location.*

- (g&h) Was the corner reestablished through lost corner proportionate methods? If so, show the method, including the directions and distances to other public land survey corners used as evidence or used for proportioning in determining the corner location?

*No.*

Affix Land Surveyor Seal



- (i) I, BRUCE D. BOWDEN,  
(type or print name) certify that the corner location shown on this record was determined by me or under my direction and control and that this U.S. Public Land Survey Monument Record is correct and complete to the best of my knowledge and belief.

*Bruce D. Bowden*  
Signature

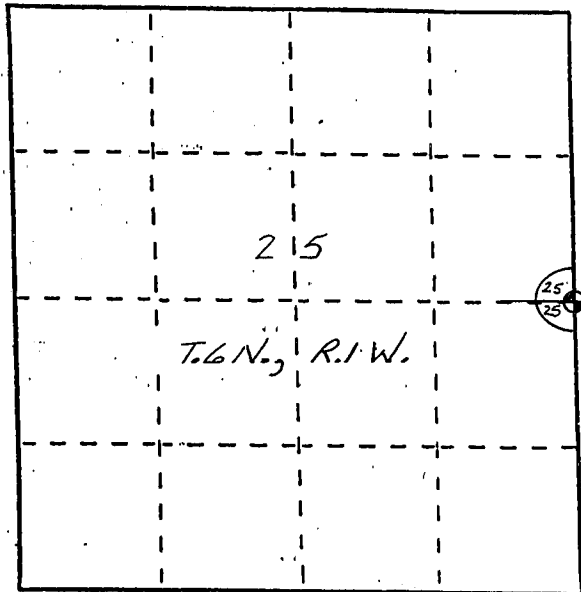
*Sept 21, 1998*  
Date

# U. S. PUBLIC LAND SURVEY MONUMENT RECORD

**INSTRUCTIONS:** This record shall show the location of the corner and shall include all of the following nine elements (a through i).

- (a) Identify the corner by reference to the U.S. public land survey system.
- = Corner monument restored.

*The East Quarter Corner of Section 25, Town 6 North, Range 1 West, Wingville Township, Iowa County, Wisconsin.*

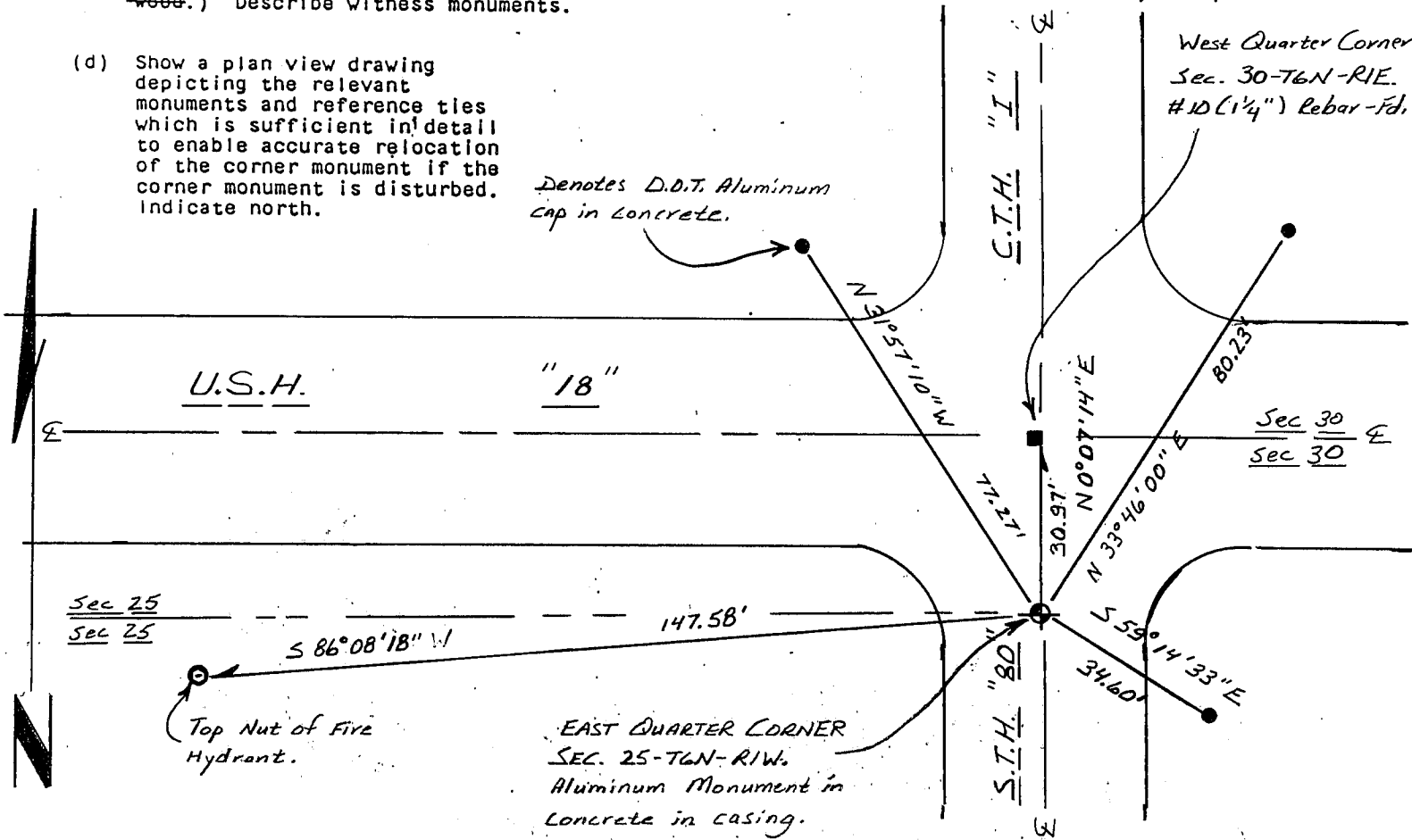


- (b) Describe any record evidence, monument evidence, occupational evidence, testimonial evidence or any other material evidence you considered, and whether the monument was found or placed.

*An Aluminum cap in concrete was found and accepted as noted on a Timothy James Moore tie sheet dated 8/3/87.*

- (c) In the plan view drawing below, provide reference ties to at least 4 witness monuments, or, if the location is within a municipality, to at least 2 witness monuments. (Witness monuments shall be made of concrete, natural stone, iron or other equally durable material, ~~except~~ wood.) Describe witness monuments.

- (d) Show a plan view drawing depicting the relevant monuments and reference ties which is sufficient in detail to enable accurate relocation of the corner monument if the corner monument is disturbed. Indicate north.



(e) Describe any material discrepancy between the location of the corner as restored or reestablished and the location of that corner as previously restored or reestablished by distance and direction. Show the discrepancy on the plan view drawing under (d), above. Show the distances between the corner as previously restored or reestablished and (1) the corner as restored or reestablished, and (2) to at least 2 of the witness monuments shown on the drawing in (d), above.

*None.*

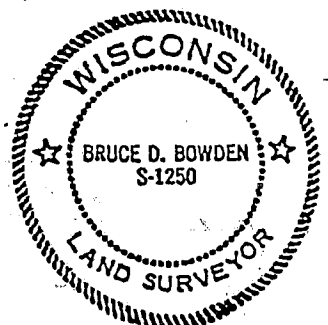
(f) Was the corner restored through acceptance of (1) an obliterated evidence location, or, (2) a found perpetuated location?

*A found perpetuated location.*

(g&h) Was the corner reestablished through lost corner proportionate methods? If so, show the method, including the directions and distances to other public land survey corners used as evidence or used for proportioning in determining the corner location?

*No.*

Affix Land Surveyor Seal



(i) BRUCE D. BOWDEN,

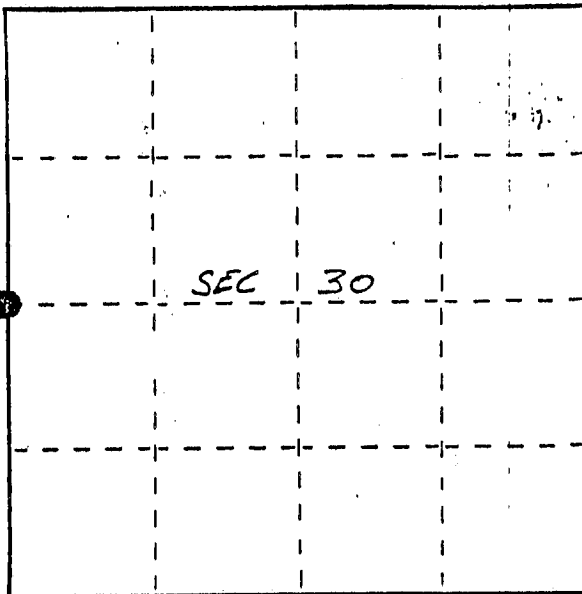
(type or print name) certify that the corner location shown on this record was determined by me or under my direction and control and that this U.S. Public Land Survey Monument Record is correct and complete to the best of my knowledge and belief.

*Bruce D. Bowden* Sept 21, 1998  
Signature Date

# U. S. PUBLIC LAND SURVEY MONUMENT RECORD

**INSTRUCTIONS:** This record shall show the location of the corner and shall include all of the following nine elements (a through i).

- (a) Identify the corner by reference to the U.S. public land survey system.
- = Corner monument restored.



W 1/4 CORNER SEC. 30  
 TOWNSHIP EDEN TWP  
 COUNTY IOWA

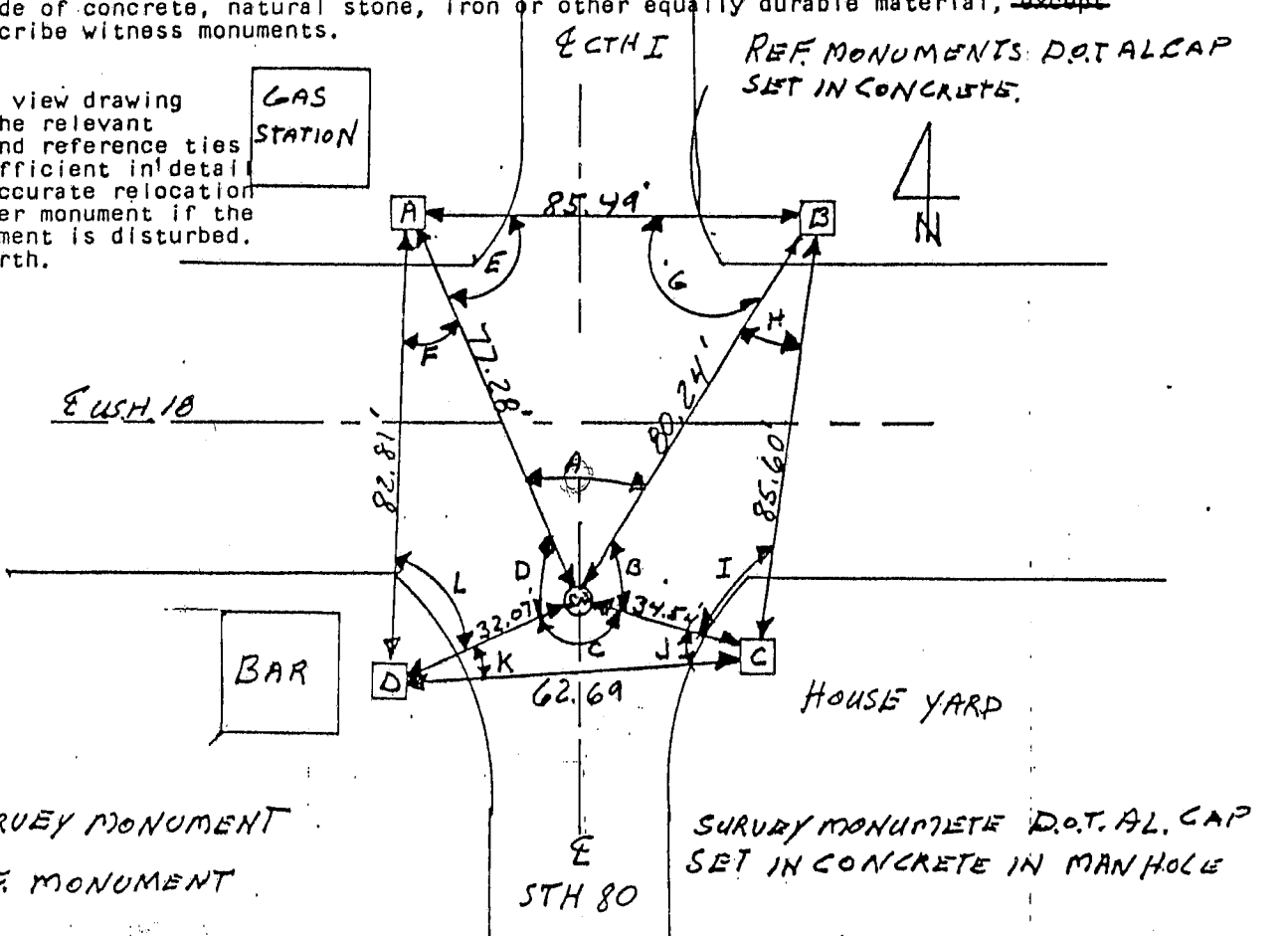
- (b) Describe any record evidence, monument evidence, occupational evidence, testimonial evidence or any other material evidence you considered, and whether the monument was found or placed.

REPLACED EXISTING PK NAIL WITH D.O.T. ALUMINUM CAP IN CONCRETE SET IN MANHOLE.

- (c) In the plan view drawing below, provide reference ties to at least 4 witness monuments, or, if the location is within a municipality, to at least 2 witness monuments. (Witness monuments shall be made of concrete, natural stone, iron or other equally durable material, ~~except~~ ~~wood~~.) Describe witness monuments.

- (d) Show a plan view drawing depicting the relevant monuments and reference ties which is sufficient in detail to enable accurate relocation of the corner monument if the corner monument is disturbed. Indicate north.

A	65° 42' 29"
B	86° 51' 43"
C	122° 17' 40"
D	85° 08' 08"
E	58° 48' 46"
F	26° 27' 05"
G	55° 28' 45"
H	23° 45' 30"
I	69° 22' 47"
J	29° 56' 48"
K	27° 45' 32"
L	68° 24' 47"



● SURVEY MONUMENT  
 □ REF. MONUMENT

