

**U.S. PUBLIC LAND SURVEY MONUMENT RECORD**

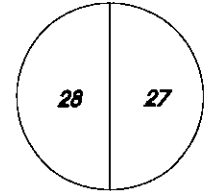
Wisconsin Department of Transportation

DT1291 2/2006

61097

|  |                                   |   |           |
|--|-----------------------------------|---|-----------|
| County Name<br><b>Grant</b>  |                                   | Name of <input checked="" type="checkbox"/> Township, <input type="checkbox"/> City, <input type="checkbox"/> Village<br><b>Wingville</b> |           |
| Surveyor Name<br><b>Michael T. Schirke</b>   |                                   |   |           |
| Address, City, State, ZIP Code<br><b>7501 College Blvd Suite 101 Overland Park, KS 66210</b> |                                   |   |           |
| Y (Northing)<br><b>352536.956</b>  | X (Easting)<br><b>1837969.381</b> | Latitude  | Longitude |
| Project ID<br><b>0020543.00</b>  |                                   | Coordinate ID   |           |

T. 6 N. - R. 1 W  
4 th Principal Meridian  
Corner **97**

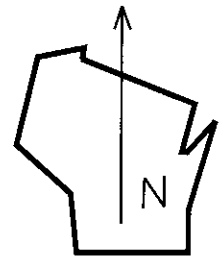


**HORIZONTAL DATUM UNITS**

- NAD 27
- NAD 83 (1991)
- NAD 83 (1997)
- Other - NAD 83 (2011)
- English
- Metric

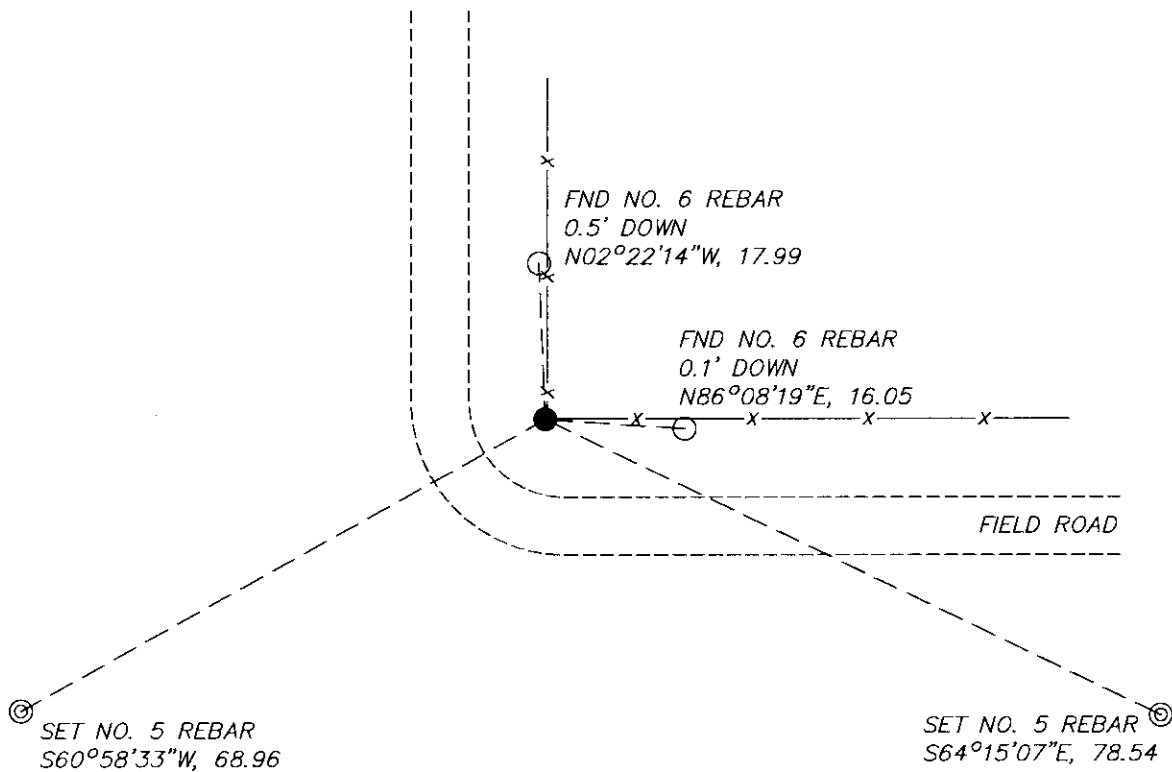
**COORDINATE SYSTEM**

- Geodetic
- State Plane South Zone
- County



Location Diagram, showing corner identification name, bearing and distance references to at least four witness monuments, fence or occupational lines, centerlines of roads, and other site details for reference. Also, show the bearings and distances between the witness monuments.

**East Quarter Corner Section 28, Township 6 North, Range 1 West, Grant County, Wisconsin**



Indicate *fd.* = found or *pl.* = placed in the diagram below  
Bearings used in the location sketch and basis for monument location are assumed, unless as noted.  
Monumentation Legend / Description of Corner and Witness Monuments.

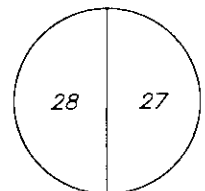
- FND NO. 6 REBAR
- ⊙ SET NO. 5 REBAR
- SET NO. 6 REBAR, 18" LONG

If applicable, show any discrepancy between the location of the corner as restored or re-established and the location of that corner as previously restored or re-established by bearing and distance. Also, show the bearings and distances between the previous corner and at least two of the witness monuments.

Basis for Monument Location

1. Describe any record evidence, monument evidence, occupational evidence or any other material evidence including traverse measurements that you considered, and whether the monument was found or placed. Explain below, be specific, and attach a separate sheet if necessary.
  
2. Was the corner.
  - a. found perpetuate
  - b. restored through acceptance of obliterated evidence.
  - c. relocated by witness testimony, or
  - d. accepted as a re-monumented corner of record and maintained with additional monumentation?
  
3. Was the corner re-established through lost corner proportionate methods? If so, show the method, including the directions and distances to other public land survey corners used as evidence or used in determining the corner location.
  1. Westwood Professional Services searched the area and found a 1.25" bent iron pipe and 2 ties per 1989 corner record. The area had recent earthwork and the ties do not fit the monument or the N/E record fence. It is believed that the 1.25" pipe was bent during the earthwork along with possibly disturbing the 2 No. 6 rebar ties. Reset the corner with a 3/4"x 18" rebar per the 1998 survey which fits the N/E fence within reason. Set 2 additional ties.
  2. B
  3. NO

T. 6 N. R. 1 W.  
 4<sup>th</sup> Principal Meridian  
 Corner 97



Certification

I, Michael T. Schinke, certify that the corner location shown on the record was determined by me or under my direction and control and that the U.S. Public Land Survey Monument Record is correct and complete to the best of my knowledge and belief, in accordance with Chapter A-E 7.08 of the Wisconsin Administration Code.

Section Control Data Sheets have been filed in the County Surveyor's office, showing final measurements by direction and distance between all remonumented corners. Section Control information is referenced by the following.



|      |                          |                    |
|------|--------------------------|--------------------|
| Date | Project ID<br>0020543.00 | Sheet(s)<br>2 of 2 |
|------|--------------------------|--------------------|

x Michael T Schinke  
 (Registered Land Surveyor Signature and Number)

04/23/2020  
 Date

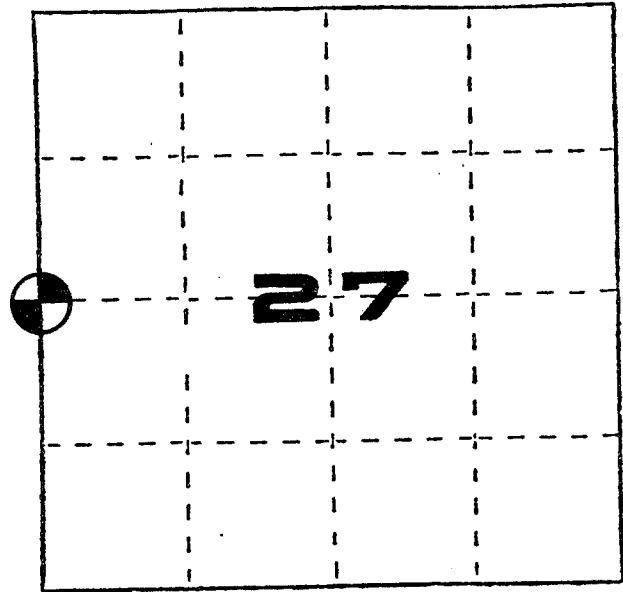
U. S. PUBLIC LAND SURVEY MONUMENT RECORD

**INSTRUCTIONS:** This record shall show the location of the corner and shall include all of the following nine elements (a through i).

- (a) Identify the corner by reference to the U.S. public land survey system.
- ⊙ = Corner monument restored.

West 1/4 corner of Section 27, T6N, R1W, Town of Wingville, Grant County, Wisconsin.

Date of survey: September 26, 1989.



- (b) Describe any record evidence, monument evidence, occupational evidence, testimonial evidence or any other material evidence you considered, and whether the monument was found or placed.

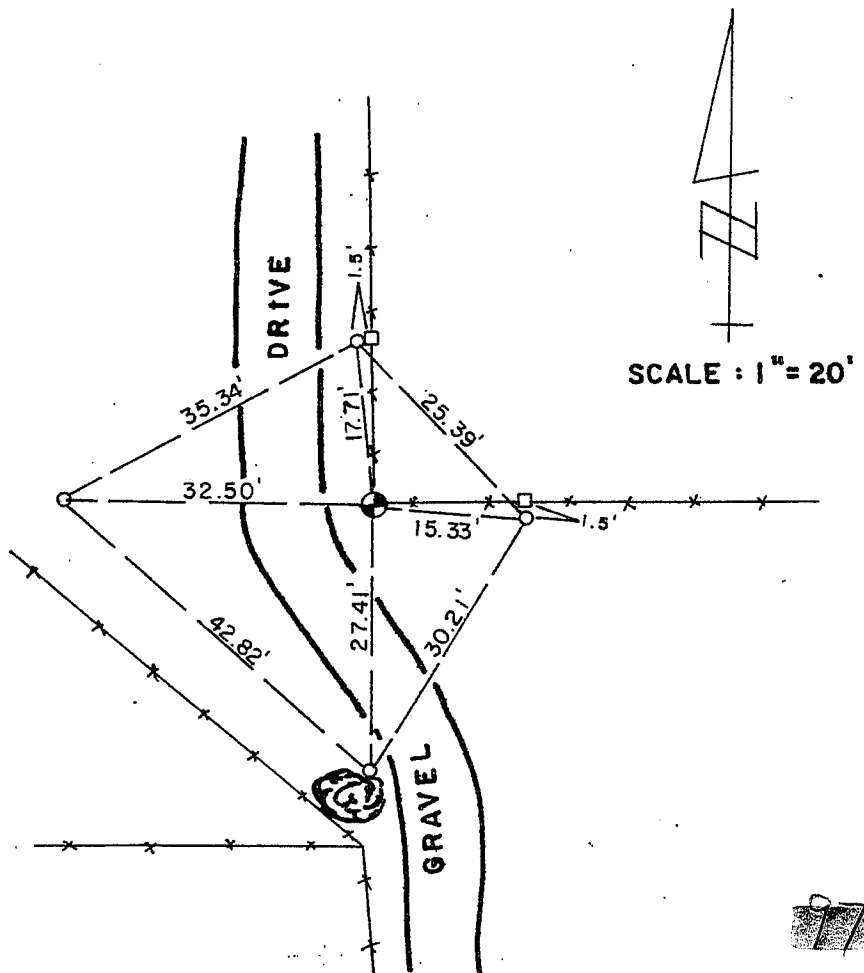
I accepted the location of the fence corner as the West 1/4 corner of Section 27, T6N, R1W and set an aluminum monument. Measurements to occupied corners North and East of here check well with original government notes.

- (c) In the plan view drawing below, provide reference ties to at least 4 witness monuments, or, if the location is within a municipality, to at least 2 witness monuments. (Witness monuments shall be made of concrete, natural stone, iron or other equally durable material.) Describe witness monuments.

- (d) Show a plan view drawing depicting the relevant monuments and reference ties which is sufficient in detail to enable accurate relocation of the corner monument if the corner monument is disturbed. Indicate north.

**LEGEND**

- FENCE POST
- 3/4" x 24" REBAR SET
- ⊙ CAST ALUMINUM MONUMENT SET



Describe any material discrepancy between the location of the corner as restored or reestablished and the location of that corner as previously stored or reestablished by distance and direction. Show the discrepancy on the plan view drawing under (d), above. Show the distances between the corner as previously restored or reestablished and (1) the corner as restored or reestablished, and (2) to at least 2 of the witness monuments shown on the drawing in (d), above.

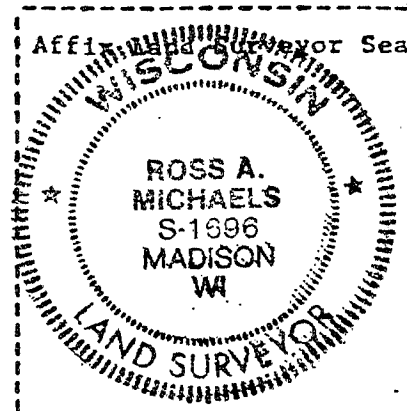
No known discrepancy.

(f) Was the corner restored through acceptance of (1) an obliterated evidence location, or, (2) a found perpetuated location?

An obliterated evidence location.

(g&h) Was the corner reestablished through lost corner proportionate methods? If so, show the method, including the directions and distances to other public land survey corners used as evidence or used for proportioning in determining the corner location?

Not a lost corner.



(1) I, Ross A. Michaels  
(type or print name) certify that the corner location shown on this record was determined by me or under my direction and control and that this U.S. Public Land Survey Monument Record is correct and complete to the best of my knowledge and belief.

Ross A. Michaels  
Signature

Nov. 27, 1989  
Date