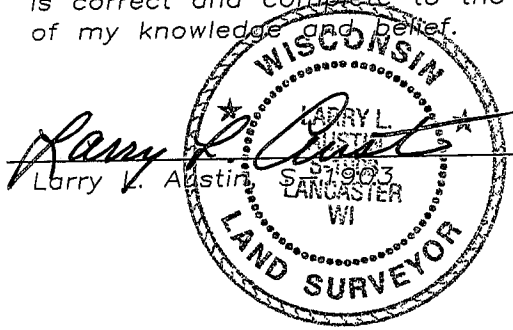


U.S. PUBLIC LAND SURVEY MONUMENT RECORD

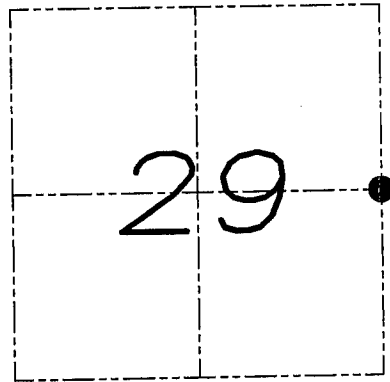
Section 29, Town 6 North Range 1 West, Town of Wingville, Grant County, Wisconsin

CERTIFICATE

I, Larry L. Austin, do hereby certify that the corner location on this record was determined by me and/or under my direct supervision and that this U.S. public land survey monument record is correct and complete to the best of my knowledge and belief.



Larry L. Austin
 Larry L. Austin date 11-25-08



● = CORNER LOCATION

HISTORY OF CORNER

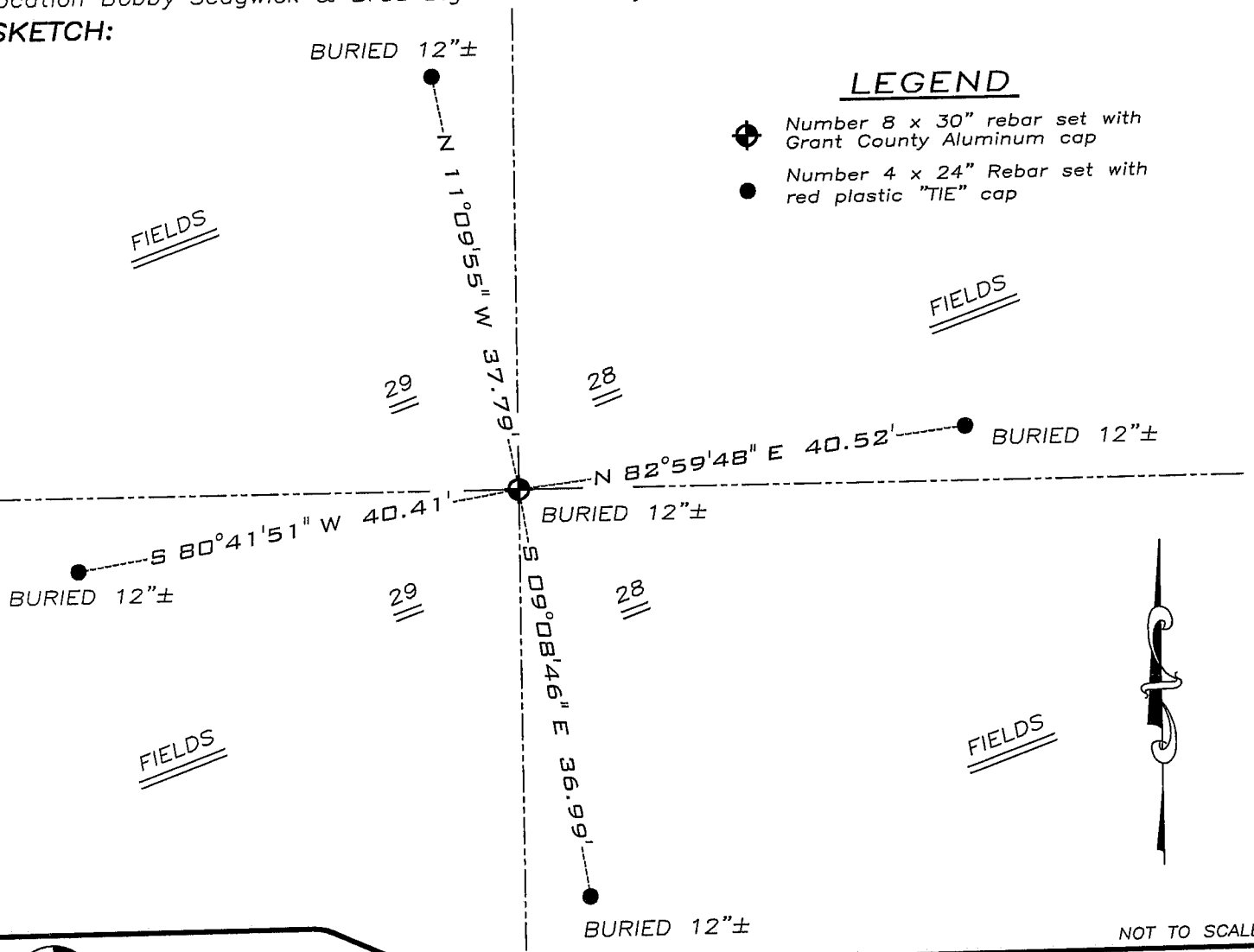
Corner was originally set in 1833 by Sibley. In 1846 Stuntz set a post in the original mound. In 1870 Allen tied to the corner. No other record of the corner was found.

CORNER EVIDENCE FOUND

I established the corner proportionately and on-line between the Northeast and Southeast corners. Verified this location using EDM & GPS methods.

DESCRIPTION OF CORNER AND WITNESS MONUMENTS, references and accessories used to perpetuate the original or re-established location of this corner. Witnesses to monument location Bobby Sedgwick & Brad Digman & Shelby Blindert

SKETCH:



LEGEND

- Number 8 x 30" rebar set with Grant County Aluminum cap
- Number 4 x 24" Rebar set with red plastic "TIE" cap

NOT TO SCALE



Austin Engineering LLC

4211 HWY 81 E, LANCASTER, WI 53813
 PHONE 608-723-6363 FAX 608-723-6702

JOB NUMBER 08S198-KELLEY
 FIELDBOOK: TDSR, 2800
 G:\GRANTDOT\HWY18
 H:\TIE\T6NR1W\96

DRAWN BY: SW AUSTIN
 APPROVED: LL AUSTIN