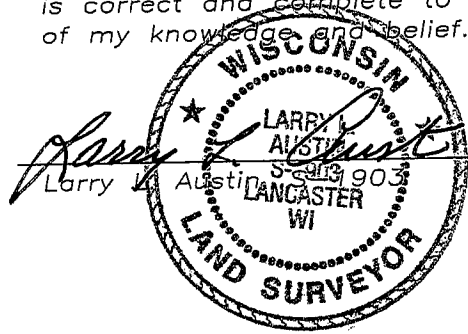


U.S. PUBLIC LAND SURVEY MONUMENT RECORD

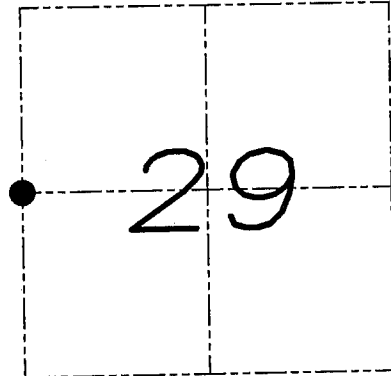
Section 29, Town 6 North Range 1 West, Town of Wingville, Grant County, Wisconsin

CERTIFICATE

I, Larry L. Austin, do hereby certify that the corner location on this record was determined by me and/or under my direct supervision and that this U.S. public land survey monument record is correct and complete to the best of my knowledge and belief.



11.25.08
date



● = CORNER LOCATION

HISTORY OF CORNER

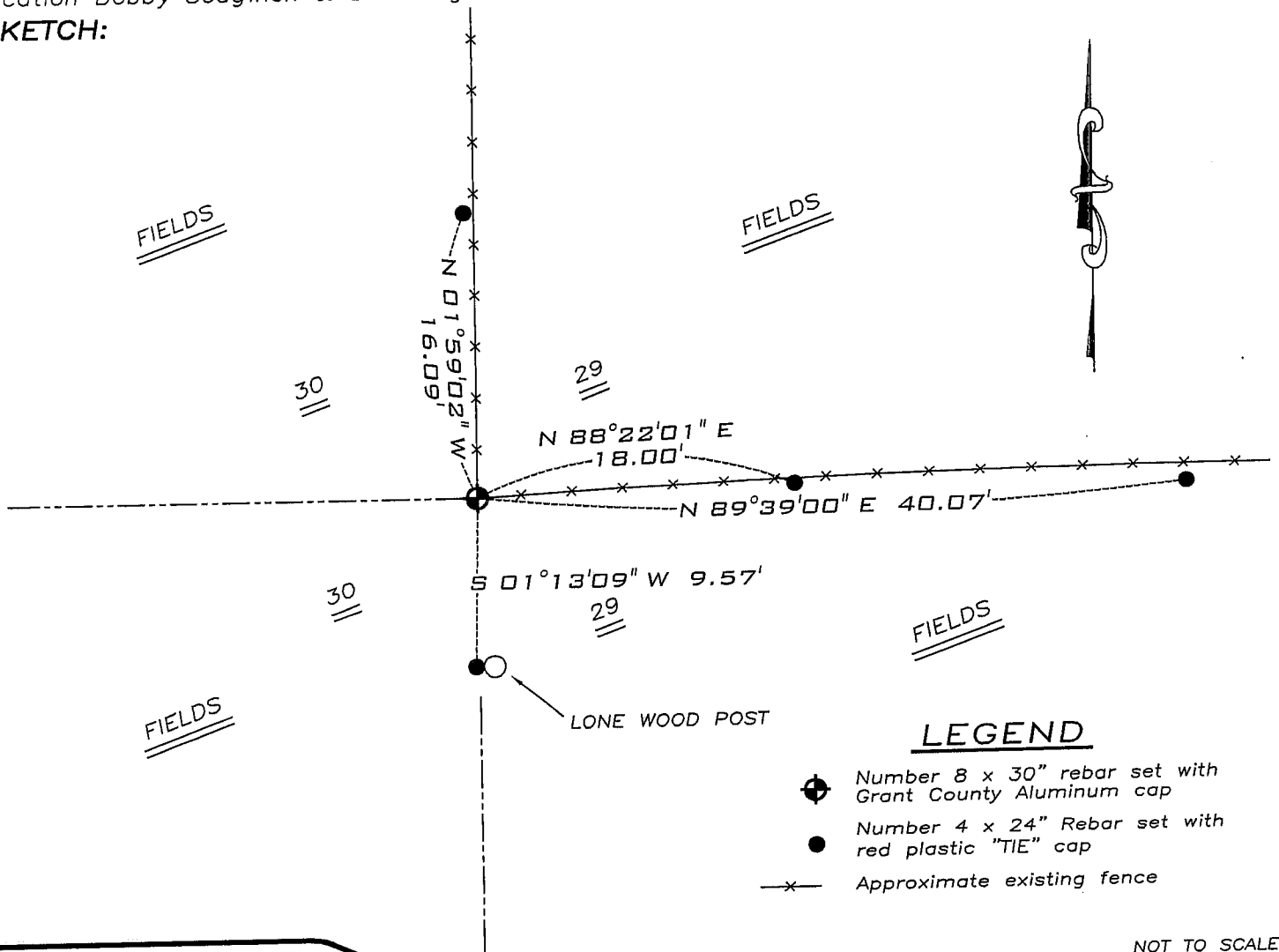
Corner was originally set in 1833 by Sibley. No other record of the corner was found.

CORNER EVIDENCE FOUND

I found and accepted an occupied fence corner as the best available evidence of the corner after an EDM & GPS traverse of the area.

DESCRIPTION OF CORNER AND WITNESS MONUMENTS, references and accessories used to perpetuate the original or re-established location of this corner. Witnesses to monument location Bobby Sedgwick & Brad Digman & Shelby Blindert

SKETCH:



LEGEND

- ⊕ Number 8 x 30" rebar set with Grant County Aluminum cap
- Number 4 x 24" Rebar set with red plastic "TIE" cap
- x- Approximate existing fence

NOT TO SCALE



Austin
Engineering LLC

4211 HWY 81 E, LANCASTER, WI 53813
PHONE 608-723-6363 FAX 608-723-6702

JOB NUMBER
08S198-KELLEY
FIELDBOOK: TDSR, 2800
G:\GRANTDOT\HWY18
H:\TIE\T6NR1W\95

DRAWN BY: SW AUSTIN
APPROVED: LL AUSTIN

95