

61094

# U.S. PUBLIC LAND SURVEY MONUMENT RECORD - IOWA COUNTY, WI

Section 30, Town 6 North Range 1 East, Town of Eden(a)

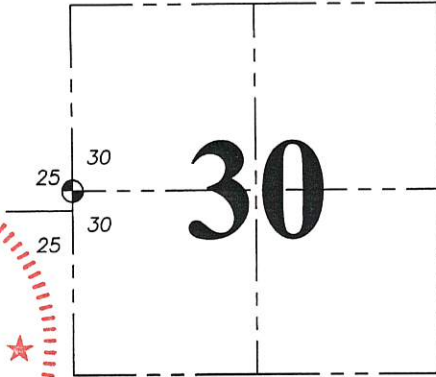
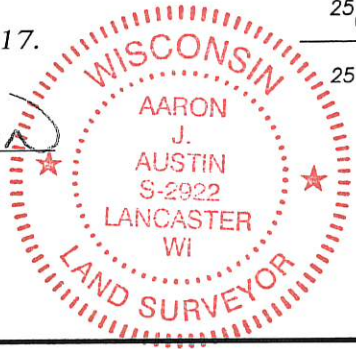
NOTE: This form is intended and designed to fulfill all requirements of the Wisconsin Administrative Code Chapter A-E 7.08, U.S. Public Land Survey Monument Record (3) (a) (b) (c) (d) (e) (f) (g) (h) (i).

CERTIFICATE: (i)

I, Aaron J. Austin, Wisconsin Professional Land Surveyor, do hereby certify that the corner location on this record was determined by me and/or under my direct supervision and that this U.S. Public Land Survey Monument Record is correct and complete to the best of my knowledge and belief.

Dated this 5th day of October, 2017.

*Aaron J. Austin*  
Aaron J. Austin, S-2922



● = CORNER LOCATION

### HISTORY OF CORNER ESTABLISHMENT:

Timothy Moore prepared a Survey Monument Record dated 8/3/1987 for the corner.  
Bruce Bowden prepared a Survey Monument Record dated 9/21/1998 for the corner.

### DESCRIPTION OF CORNER EVIDENCE FOUND: (b) (f) (g) (h)

I set a P.K. Nail at the recorded distances of two witness corners found per Bowden's Survey Monument Record. I set two additional witness corners after I verified the monument's location using G.P.S. and E.D.M. methods.

### DESCRIPTION OF CORNER AND WITNESS MONUMENTS, references and accessories used to perpetuate the original or re-established location of this corner: (c) (d) (e)

Witnesses to corner location Shane Austin, Owen Austin. Drawn by Owen Austin.

SKETCH:

## LEGEND

- Section Corner—as designated
- D.O.T cap in concrete
- 3/4" x 18" rebar set
- ⊙ Top center nut of hydrant
- ▭ Sign
- ⊗ Utility pole

Edge of blacktop

