

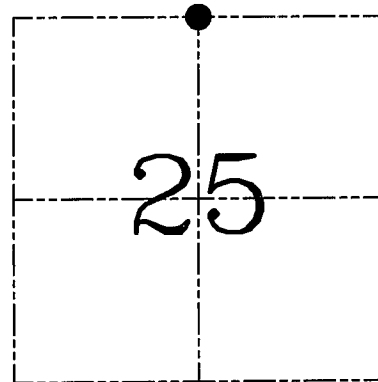
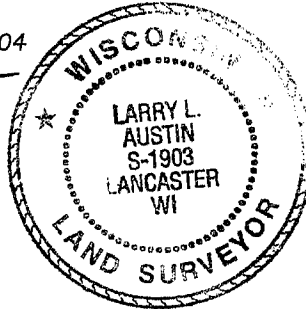
**U.S. PUBLIC LAND SURVEY MONUMENT RECORD – GRANT COUNTY, WI**  
**Section 25, Town 6 North Range 1 West, Town of Wingville**

CERTIFICATE

I, Larry L. Austin, do hereby certify that the corner location on this record was determined by me and/or under my direct supervision and that this U.S. public land survey monument record is correct and complete to the best of my knowledge and belief.

Dated this 9th day of November, 2004

*Larry L. Austin*  
 Larry L. Austin S-1903



● = CORNER LOCATION

HISTORY OF CORNER ESTABLISHMENT

Corner was originally set in 1833 by Sibley. Various surveys were found which tied to this corner and noted a 2" iron pipe.

DESCRIPTION OF CORNER EVIDENCE FOUND

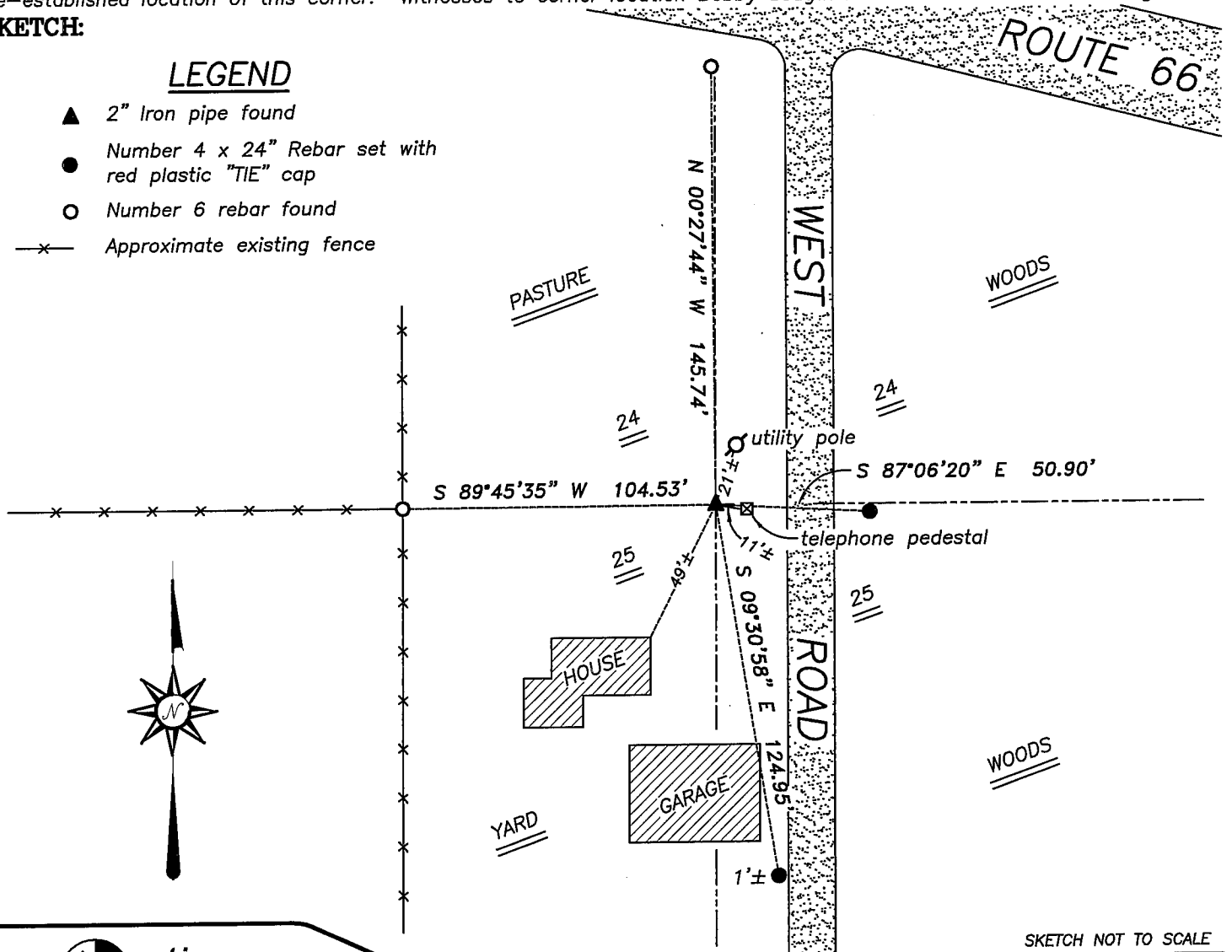
I found the 2" iron pipe and accepted it's location after an EDM & GPS traverse of the area.

DESCRIPTION OF CORNER AND WITNESS MONUMENTS, references and accessories used to perpetuate the original or re-established location of this corner. Witnesses to corner location Bobby Sedgwick & Shane Austin & Brad Digman

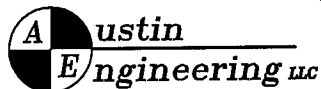
**SKETCH:**

LEGEND

- ▲ 2" Iron pipe found
- Number 4 x 24" Rebar set with red plastic "TIE" cap
- Number 6 rebar found
- x— Approximate existing fence



SKETCH NOT TO SCALE



4211 HWY 81 E, LANCASTER, WI 53813  
 PHONE 608-723-6363 FAX 608-723-6702

JOB NUMBER 04S263  
 FIELDBOOK: TSDR, 2217  
 G:\T6NR1W\25  
 H:\TIE\T6NR1W\82

DRAWN BY: SW AUSTIN  
 APPROVED: LL AUSTIN