

U.S. PUBLIC LAND SURVEY MONUMENT RECORD - GRANT COUNTY, WI

Section 24, Town 6 North Range 1 West, Town of Wingville (a)

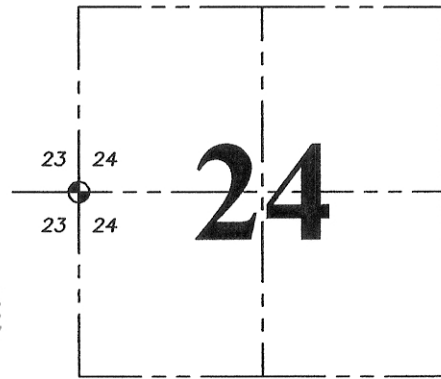
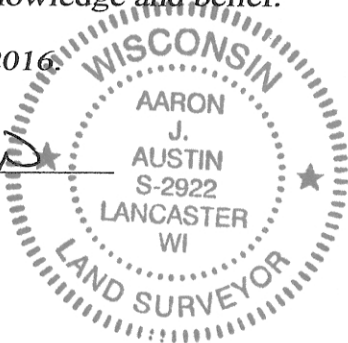
NOTE: This form is intended and designed to fulfill all requirements of the Wisconsin Administrative Code Chapter A-E 7.08, U.S. Public Land Survey Monument Record (3) (a) (b) (c) (d) (e) (f) (g) (h) (i).

CERTIFICATE: (i)

I, Aaron J. Austin, Wisconsin Professional Land Surveyor, do hereby certify that the corner location on this record was determined by me and/or under my direct supervision and that this U.S. Public Land Survey Monument Record is correct and complete to the best of my knowledge and belief.

Dated this 25th day of July, 2016.

Aaron J. Austin
Aaron J. Austin, S-2922



⊙ = CORNER LOCATION

Grant County Coordinates:
NAD 83 (2011) WISCORS
Northing: 572,164.62
Easting: 889,086.10

HISTORY OF CORNER ESTABLISHMENT:

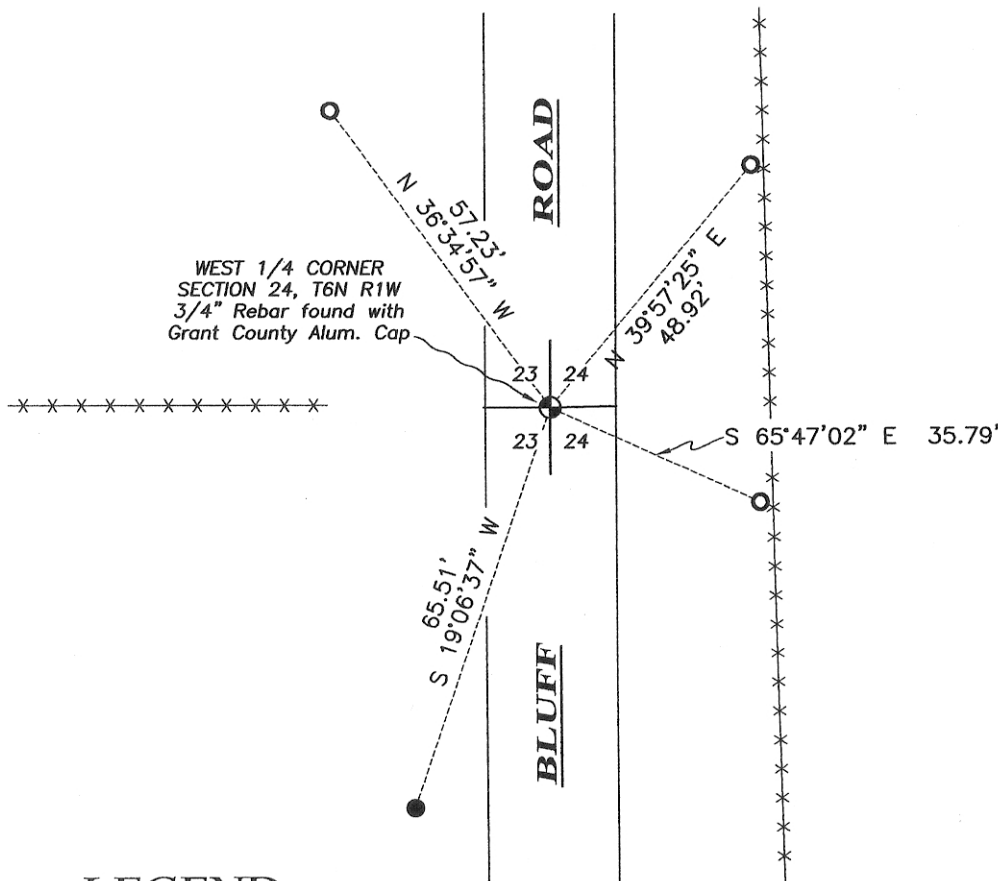
Sibley set the original corner in 1833.
Larry Austin reset the corner in 1997 and filed a Survey Monument Record.

DESCRIPTION OF CORNER EVIDENCE FOUND: (b) (f) (g) (h)

I found the 3/4" Rebar with a Grant County Aluminum Cap and 3 witness corners as set by Larry Austin. I set 1 additional witness corner after I verified it's location with G.P.S. methods.

DESCRIPTION OF CORNER AND WITNESS MONUMENTS, references and accessories used to perpetuate the original or re-established location of this corner. (c) (d) (e)
Witnesses to corner location Shane Austin, Owen Austin.

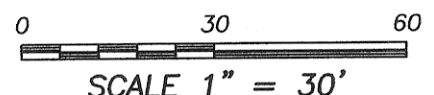
SKETCH:



Bearings referenced to the Grant County Coordinate System NAD 83 (2011) which was by determined WISCORS and G.P.S. observation.

LEGEND

- ⊙ Section Corner—as designated
- 1/2" Rebar found
- 1/2" x 12" Rebar set
- *- Existing fence

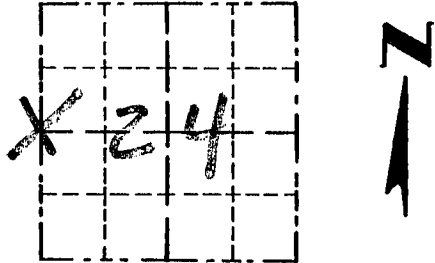


Survey Monument Record

TYPE OF MONUMENT 3/4" X 24" IRON BAR
SET W/ GAP

CORNER NO. 79
 SECTION 24
 TOWN 6N
 RANGE 1W

FIELD BOOK: 94-06
 PAGE 23



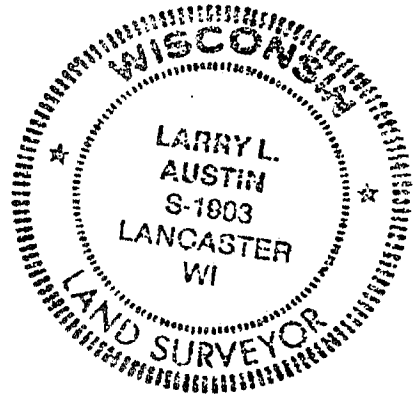
BASIS FOR MONUMENT LOCATION

(Use reverse side if necessary)

Show info such as: History of corner, with reference to Vol. and pg., dates, surveyor; exact description of monument replaced; if location computed, by taped or EDM traverse; landowner, remarks, etc.

SEAL:

CORNER SET IN 1833 BY SIBLEY. NO RECORD OF CORNER FOUND SINCE ORIGINAL SURVEY; CORNER WAS SET ONLINE WITH FENCE TO WEST FOR NORTHING, IN CENTERLINE OF RD NORTH/SOUTH FOR EASTING. VERIFIED ITS LOCATION USING EDM METHODS.



CERTIFIED CORRECT

Larry L. Austin
 Registered Land Surveyor

DATE: 3-28-97

TIE SKETCH

Show at least three (3) ties and monument

LEG, END

- ⊕ 3/4" X 24" IRON BAR SET W/ CAP.
- 1/2" X 15" IRON BAR SET
- XX EXISTING FENCE

