

**U.S. PUBLIC LAND SURVEY MONUMENT RECORD**

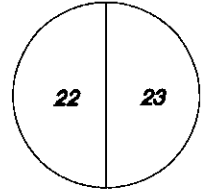
Wisconsin Department of Transportation

DT1291 2/2006

61078

County Name <b>Grant</b>		Name of <input checked="" type="checkbox"/> Township, <input type="checkbox"/> City, <input type="checkbox"/> Village <b>Wingville</b>	
Surveyor Name <b>Michael T. Schinke</b>			
Address, City, State, ZIP Code <b>7501 College Blvd Suite 101 Overland Park, KS 66210</b>			
Y (Northing) <b>357787.925</b>	X (Easting) <b>1843267.210</b>	Latitude	Longitude
Project ID <b>0020543.00</b>		Coordinate ID	

T. 6 N. - R. 1 W  
4<sup>th</sup> Principal Meridian  
Corner **78**

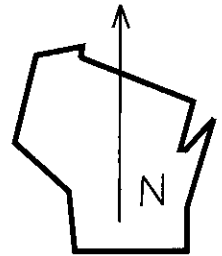


**HORIZONTAL DATUM UNITS**

- NAD 27
- NAD 83 (1991)
- NAD 83 (1997)
- Other-- NAD 83 (2011)
- English
- Metric

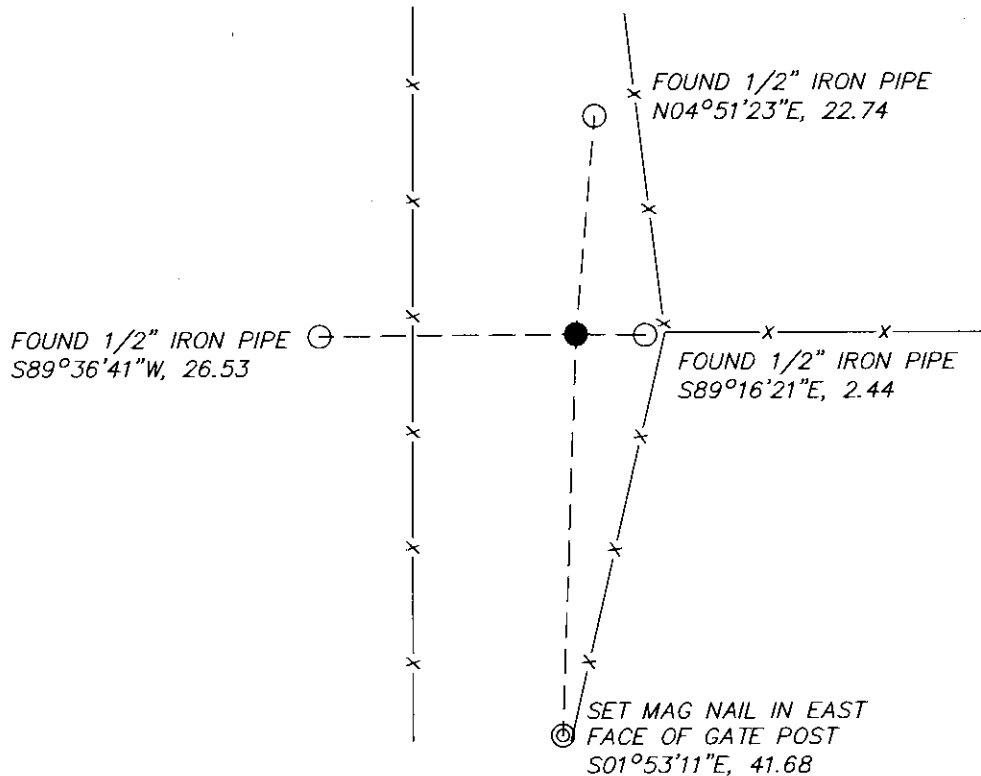
**COORDINATE SYSTEM**

- Geodetic
- State Plane South Zone
- County



Location Diagram, showing corner identification name, bearing and distance references to at least four witness monuments, fence or occupational lines, centerlines of roads, and other site details for reference. Also, show the bearings and distances between the witness monuments.

**East Quarter Corner Section 22, Township 6 North, Range 1 West, Grant County, Wisconsin**



Indicate fd. = found or pl. = placed in the diagram below  
Bearings used in the location sketch and basis for monument location are assumed, unless as noted.  
Monumentation Legend / Description of Corner and Witness Monuments.

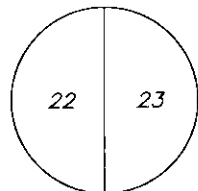
- FND 1/2" IRON PIPE
- ⊙ SET MAG NAIL
- FND 1-1/4" IRON PIPE

If applicable, show any discrepancy between the location of the corner as restored or re-established and the location of that corner as previously restored or re-established by bearing and distance. Also, show the bearings and distances between the previous corner and at least two of the witness monuments.

Basis for Monument Location

1. Describe any record evidence, monument evidence, occupational evidence or any other material evidence including traverse measurements that you considered, and whether the monument was found or placed. Explain below, be specific, and attach a separate sheet if necessary.
  
  2. Was the corner.
    - a. found perpetuate
    - b. restored through acceptance of obliterated evidence.
    - c. relocated by witness testimony, or
    - d. accepted as a re-monumented corner of record and maintained with additional monumentation?
  
  3. Was the corner re-established through lost corner proportionate methods? If so, show the method, including the directions and distances to other public land survey corners used as evidence or used in determining the corner location.
- 
1. Westwood Professional Services searched the area and found the 1 1/4" pipe and 3 of 5 ties per the 1997 LaRosa corner certificate. Found Monument agrees with local evidence and previous surveys, accepting as corner location and set 1 additional tie.
  2. D
  3. NO

T. 6 N. R. 1 W.  
4 th Principal Meridian  
Corner 78



Certification

I, Michael T. Schinke, certify that the corner location shown on the record was determined by me or under my direction and control and that the U.S. Public Land Survey Monument Record is correct and complete to the best of my knowledge and belief, in accordance with Chapter A-E 7.08 of the Wisconsin Administration Code.

Section Control Data Sheets have been filed in the County Surveyor's office, showing final measurements by direction and distance between all re-monumented corners. Section Control information is referenced by the following.

Date	Project ID	Sheet(s)
	0020543.00	2 of 2



X Michael T Schinke  
(Registered Land Surveyor Signature and Number)

04/23/2020  
Date

Survey Monument Record

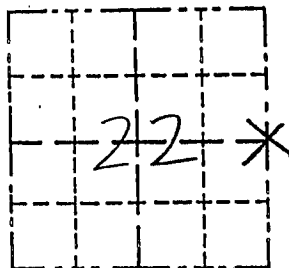
TYPE OF MONUMENT 1/4" IRON PIPE  
 STATE PLANE COORDINATES: N \_\_\_\_\_  
 E \_\_\_\_\_  
 ELEVATION — M.S.L. DATUM: \_\_\_\_\_  
 THETA ANGLE: \_\_\_\_\_  
 FIELD BOOK: \_\_\_\_\_  
 PAGE \_\_\_\_\_

CORNER NO. \_\_\_\_\_  
 SECTION 22  
 TOWN 6N  
 RANGE 1W

BASIS FOR MONUMENT LOCATION

(Use reverse side if necessary)

Show info such as: History of corner, with reference to Vol. and pg., dates, surveyor; exact description of monument replaced; if location computed, by taped or EDM traverse; landowner, remarks, etc.



LOCATION  
(Indicated by "X")

- FOUND PERPETUATED LOCATION
- OBLITERATED EVIDENCE LOCATION
- LOST CORNER (RESTORED BY PROPORTIONATE METHODS)

There are no recent <sup>OR OLD</sup> survey records of this corner. The occupied location of fences N, S, & E fell approx. 20' east of a straight line between existing monuments at the NE & SE corners. Ownership records as well as verbal statements indicate continuous occupation at this corner since the mid 1800's. Topographical considerations would also explain the deviation from line. The restored corner was placed at double the easting between the c/4 and occupied SW corner of the SE 1/4-NE 1/4 in line with the fence line east. This location provided the best fit of occupied lines to N, S, E and within section 22. (see survey, this date for details)

CERTIFIED CORRECT TO THE BEST OF MY KNOWLEDGE AND BELIEF

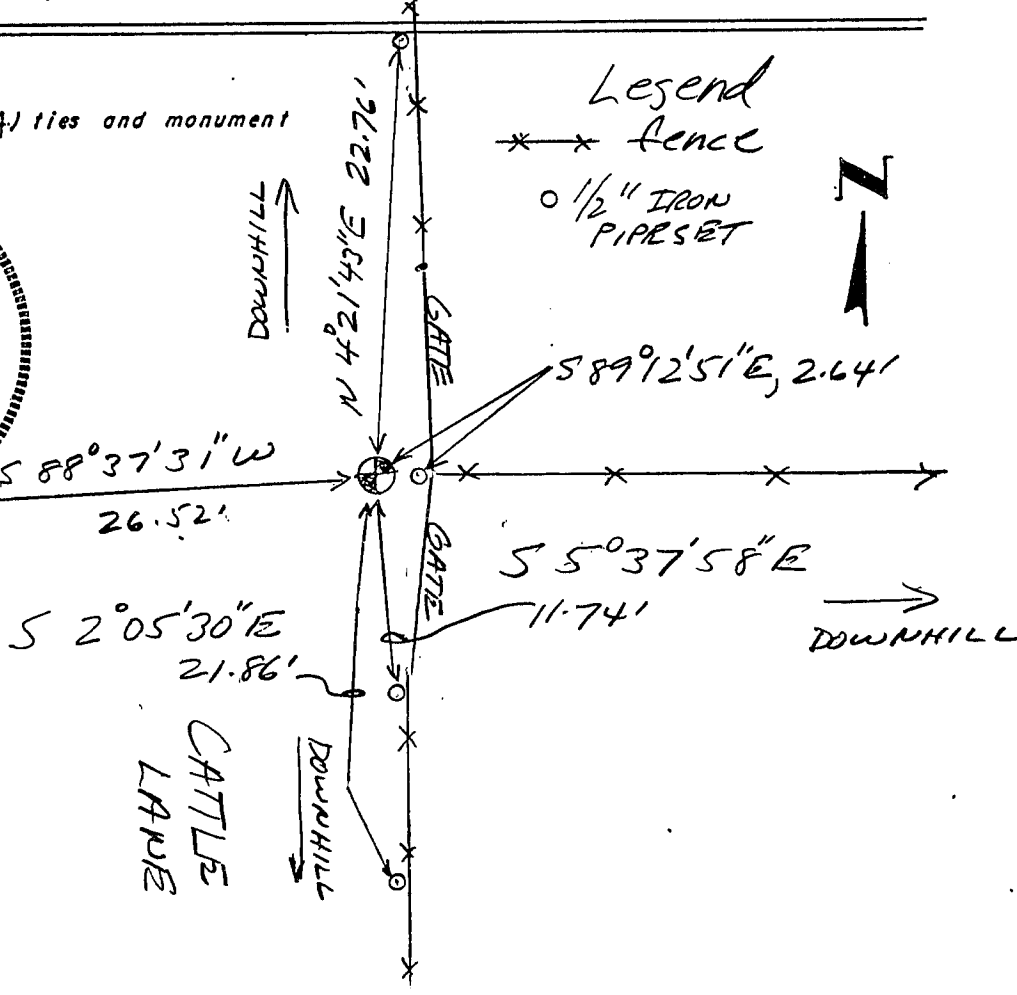
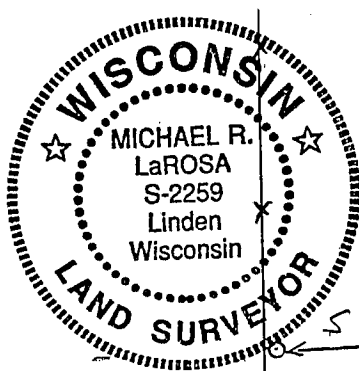
Michael R. LaRosa

Registered Land Surveyor

DATE: 12/30/1997

TIE SKETCH

Show at least (4) ties and monument



Legend  
 \* \* \* fence  
 o 1/2" IRON PIPE SET

