

U.S. PUBLIC LAND SURVEY MONUMENT RECORD

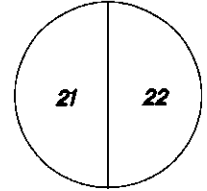
Wisconsin Department of Transportation

DT1291 2/2006

61077

County Name Grant		Name of <input checked="" type="checkbox"/> Township, <input type="checkbox"/> City, <input type="checkbox"/> Village Wingville	
Surveyor Name Michael T. Schinke			
Address, City, State, ZIP Code 7501 College Blvd Suite 101 Overland Park, KS 66210			
Y (Northing) 357814.837	X (Easting) 1837941.521	Latitude	Longitude
Project ID 0020543.00		Coordinate ID	

T. 6 N. — R. 1 W
4th Principal Meridian
Corner **77**

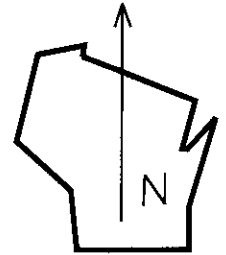


HORIZONTAL DATUM UNITS

- NAD 27
- NAD 83 (1991)
- NAD 83 (1997)
- Other— NAD 83 (2011)
- English
- Metric

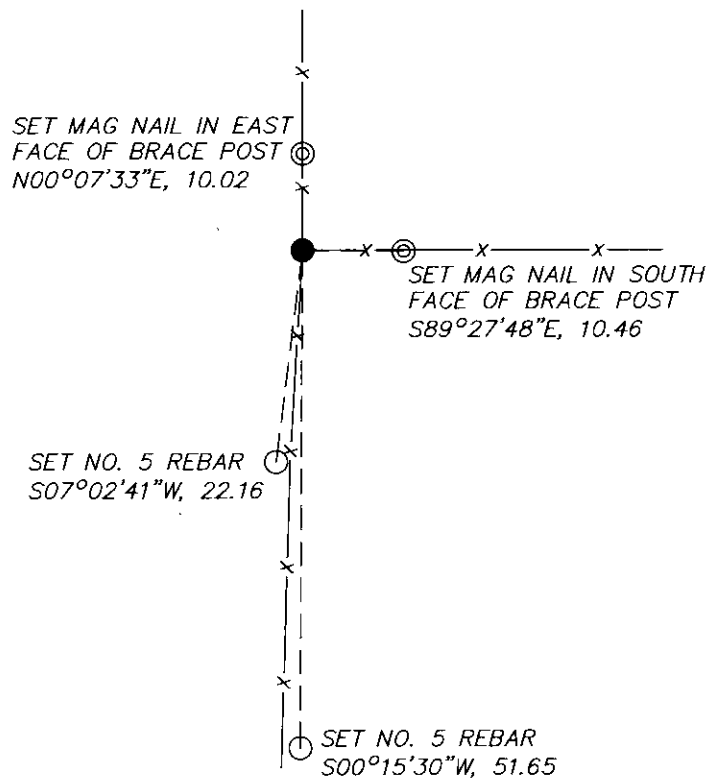
COORDINATE SYSTEM

- Geodetic
- State Plane South Zone
- County



Location Diagram, showing corner identification name, bearing and distance references to at least four witness monuments, fence or occupational lines, centerlines of roads, and other site details for reference. Also, show the bearings and distances between the witness monuments.

East Quarter Corner Section 21, Township 6 North, Range 1 West, Grant County, Wisconsin



Indicate *fd.* = found or *pl.* = placed in the diagram below
Bearings used in the location sketch and basis for monument location are assumed, unless as noted.
Monumentation Legend / Description of Corner and Witness Monuments.

- SET NO. 5 REBAR
- ⊙ SET MAG NAIL
- FND NO. 6 REBAR

If applicable, show any discrepancy between the location of the corner as restored or re-established and the location of that corner as previously restored or re-established by bearing and distance. Also, show the bearings and distances between the previous corner and at least two of the witness monuments.

REC'D JUL 5 1996

GRANT COUNTY

Survey Monument Record

TYPE OF MONUMENT 3/4" X 24" IRON BAR
STATE PLANE COORDINATES: N SET W/ CAP
E _____

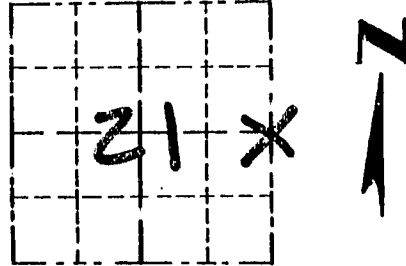
ELEVATION — M.S.L. DATUM: _____

THETA ANGLE: _____

FIELD BOOK: 95-18

PAGE 25

CORNER NO. _____
SECTION 21
TOWN 6N
RANGE 1W



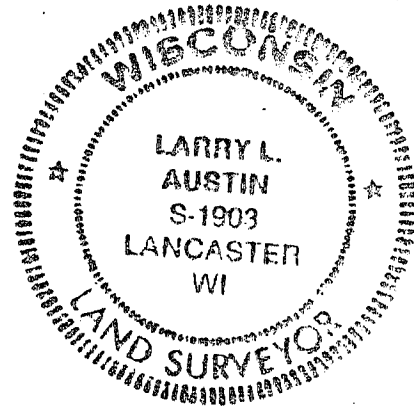
LOCATION
(Indicated by "X")

BASIS FOR MONUMENT LOCATION

(Use reverse side if necessary)

ORIGINAL CORNER SET IN
1833 B4 SIBLEY. NO RECORD
FOUND SINCE ORIGINAL
SURVEY. I ACCEPTED AN
OCCUPATION LOCATION &
VERIFIED 1/2 MILE NORTH AN
SOUTH B4 EDM TRAVERSE
OF THE AREA.

SEAL:



CERTIFIED CORRECT

Larry L. Austin
Registered Land Surveyor

DATE: 5-9-96

TIE SKETCH

Show at least three (3) ties and monument

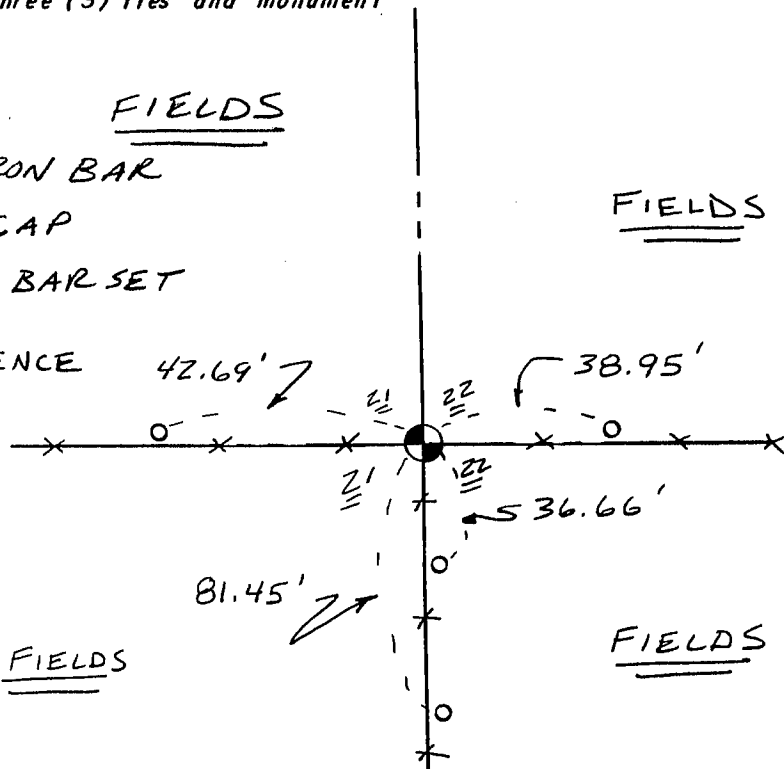
LEGEND

FIELDS

⊕ 3/4" X 24" IRON BAR
SET W/ CAP

○ 1/2" X 15" IRON BAR SET

-- EXISTING FENCE



No SCALE