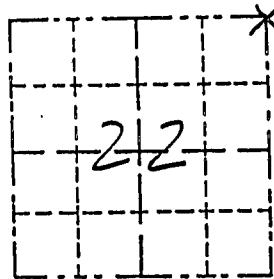


REC'D FEB 11 1998

Survey Monument Record

TYPE OF MONUMENT 3/4" REBAR (FOUND)  
STATE PLANE COORDINATES: N \_\_\_\_\_  
E \_\_\_\_\_  
ELEVATION — M.S.L. DATUM: \_\_\_\_\_  
THETA ANGLE: \_\_\_\_\_  
FIELD BOOK: \_\_\_\_\_  
PAGE \_\_\_\_\_

CORNER NO. \_\_\_\_\_  
SECTION 22  
TOWN 6N  
RANGE 1W



BASIS FOR MONUMENT LOCATION

(Use reverse side if necessary)

Show info such as: History of corner, with reference to Vol. and pg., dates, surveyor; exact description of monument replaced; if location computed, by taped or EDM traverse; landowner, remarks, etc.

LOCATION  
(Indicated by "X")

- FOUND PERPETUATED LOCATION
- OBLITERATED EVIDENCE LOCATION
- LOST CORNER (RESTORED BY PROPORTIONATE METHODS)

The most recent record of this corner is in a tie sheet for the SE corner of 22 dated 9/27/1989. Ownership records indicate continuous occupation at this corner since the mid 1800's. A 3/4" rebar found at a 3 way fence intersection was accepted as the corner location after it fit well with other corners in the area.



CERTIFIED CORRECT TO THE BEST OF MY KNOWLEDGE AND BELIEF

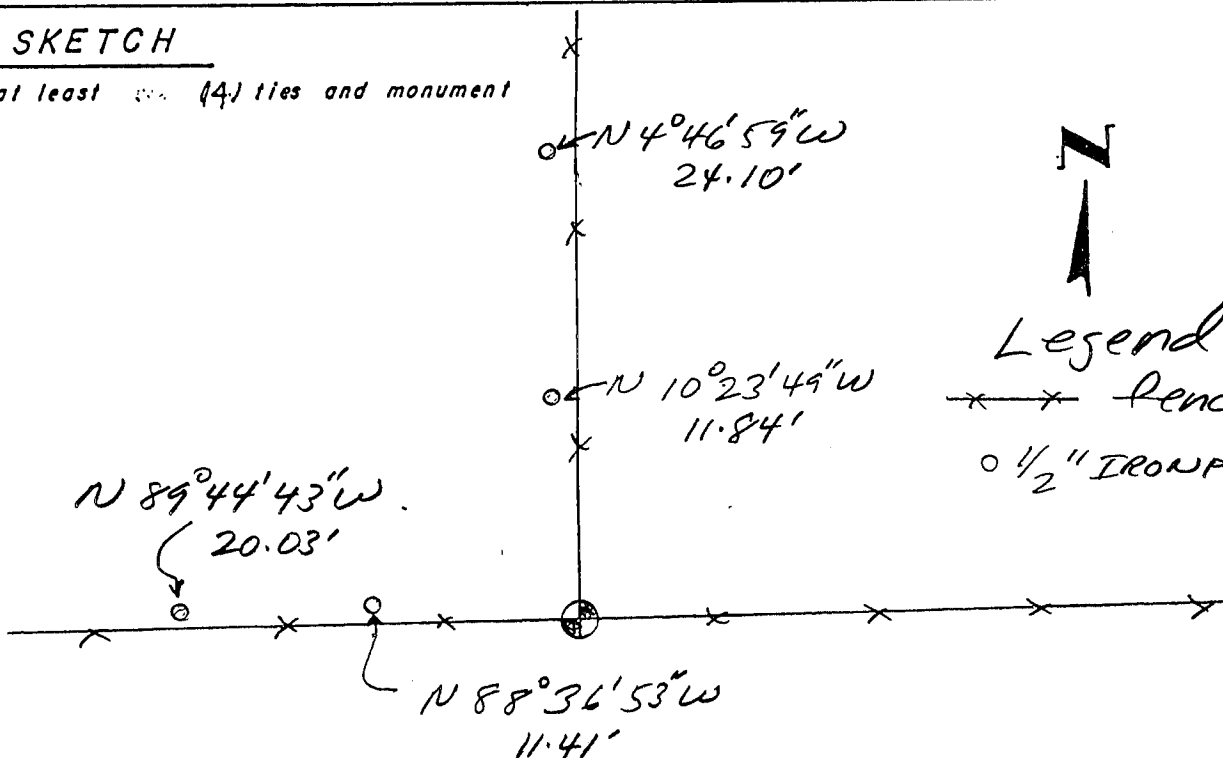
*Michael R. LaRosa*

Registered Land Surveyor

DATE: 12/30/1997

TIE SKETCH

Show at least (4) ties and monument



Legend  
X-X Fence  
O 1/2" IRON PIPE SET