

CERTIFIED LAND CORNER

STATE OF WISCONSIN COUNTY OF GRANT

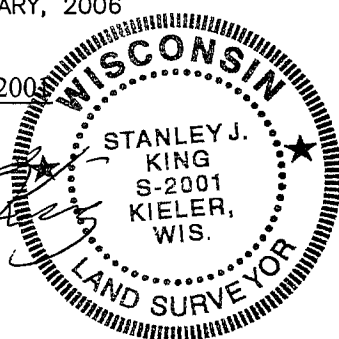
CERTIFICATE

I, Stanley King, do hereby certify that on the 11th day of January, 2006, I found no evidence of the South corner of SECTION 14, T6N, R1W, Fourth Principal Meridian, and I re-established said corner according the Wisconsin Statutes as shown and described hereon.

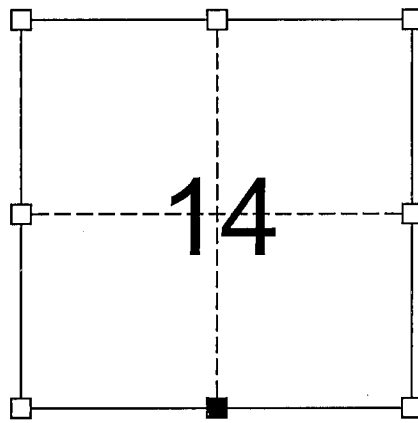
Dated this 11th day of JANUARY, 2006

Registered Land Surveyor--S-2001

Title

SECTION 14



14

■ = Corner Location
T6N R1W
Town of: WINGVILLE

Seal:

History of original corner establishment:
ORIGINAL SURVEY COMPLETED 1833, BY SIBLEY

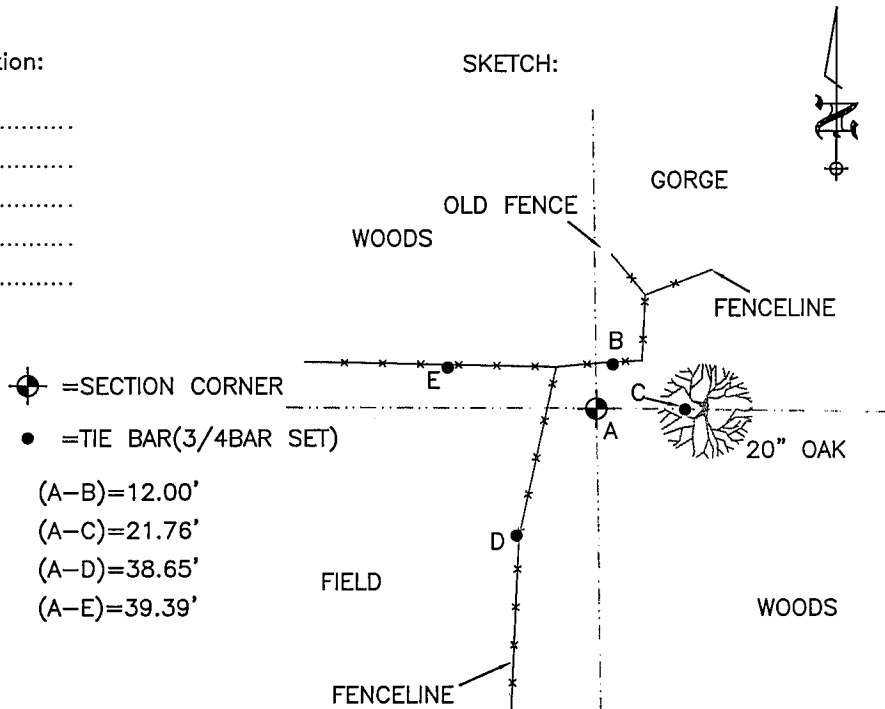
Description of corner evidence found:
FOUND NO EVIDENCE OF THE CORNER OR ITS WITNESS--
SET A 1" REBAR WITH
GRANT COUNTY MONUMENT CAP. BY DIVISION OF SECTION 14

Description of corner and witness monuments, references, and accessories used to perpetuate the original or re-established location of this corner.

Witnesses to corner location:

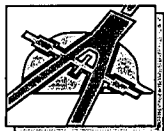
Jeffrey J Brandt
Justin R. Persinger
.....
.....
.....

SKETCH:



NOTE:

All points set being a 3/4" rebar weighing 1.50 lbs./lin. ft.



BLACKHAWK
ENGINEERING, Ltd.

Civil & Municipal Engineers and Building Design
2 INSIGHT DRIVE OFFICE PHONE: (608) 348-4433
PLATTEVILLE, WISCONSIN FAX: (608) 348-4449

SURVEY CREW: JJB, JRP
DRAWN BY: CDC
DATE: JAN. 11, 2006
FILE: f:\acad12\2005\05-115\tiesheet.dwg