

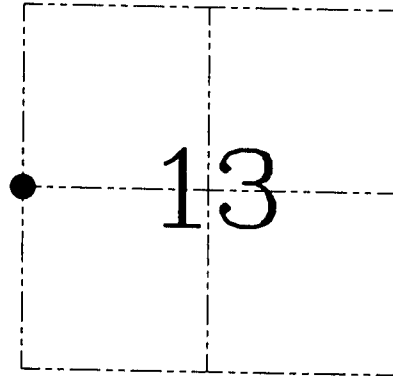
U.S. PUBLIC LAND SURVEY MONUMENT RECORD – GRANT COUNTY, WI
Section 13, Town 6 North Range 1 West, Town of Wingville

CERTIFICATE

I, Larry L. Austin, do hereby certify that the corner location on this record was determined by me and/or under my direct supervision and that this U.S. public land survey monument record is correct and complete to the best of my knowledge and belief.

Dated this 2nd day of August, 2002

Larry L. Austin
 Larry L. Austin S-1903



● = CORNER LOCATION

HISTORY OF CORNER ESTABLISHMENT

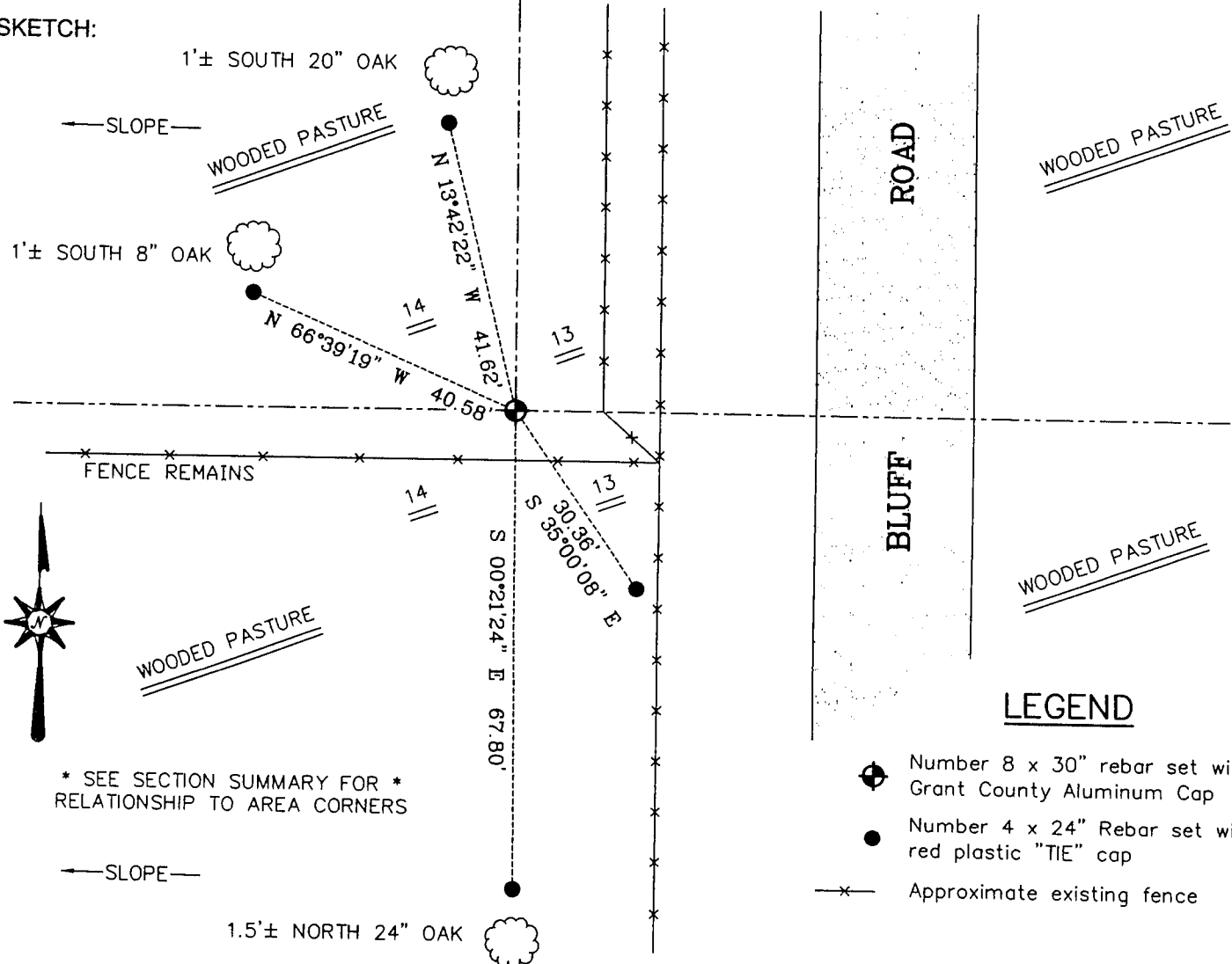
Corner was originally set in 1833 by Sibley.
 The original corner was found in 1856 by Overton on two different occasions.

DESCRIPTION OF CORNER EVIDENCE FOUND

I found no evidence to the location of the original corner. I reset the corner proportionately between the Northwest and Southwest corners. Verified this location using EDM & GPS methods.

DESCRIPTION OF CORNER AND WITNESS MONUMENTS, references and accessories used to perpetuate the original or re-established location of this corner. Witnesses to the corner location Bobby Sedgwick & Shelby Blindert & Brad Digman

SKETCH:



LEGEND

- Number 8 x 30" rebar set with Grant County Aluminum Cap
- Number 4 x 24" Rebar set with red plastic "TIE" cap
- x— Approximate existing fence

* SEE SECTION SUMMARY FOR *
 RELATIONSHIP TO AREA CORNERS

SKETCH NOT TO SCALE

AUSTIN ENGINEERING, LLC

4211 HWY 81 EAST, LANCASTER, WI 53813
 PHONE 608-723-6363 FAX 608-723-6702

FIELDBOOK: SDR33, 2135
 G: \T6NR1W\T6NR1W
 C: \SWA\TIE\T6NR1W\59
 CREW: BS-SB-SA-BD

DRAWN BY: SW AUSTIN
 APPROVED: LL AUSTIN

CORNER NUMBER 59