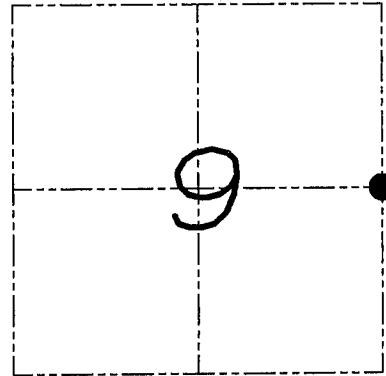


U.S. PUBLIC LAND SURVEY MONUMENT RECORD

Section 9, Town 6 North Range 1 West, Town of Wingville, Grant County, Wisconsin

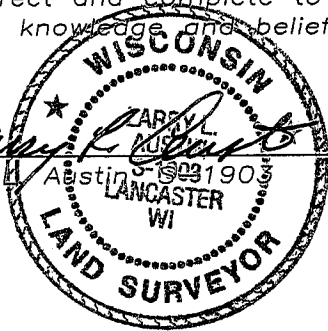
CERTIFICATE

I, Larry L. Austin, do hereby certify that the corner location on this record was determined by me and/or under my direct supervision and that this U.S. public land survey monument record is correct and complete to the best of my knowledge and belief.



● = CORNER LOCATION

Larry L. Austin
 Larry L. Austin
 1-2-09
 date



HISTORY OF CORNER

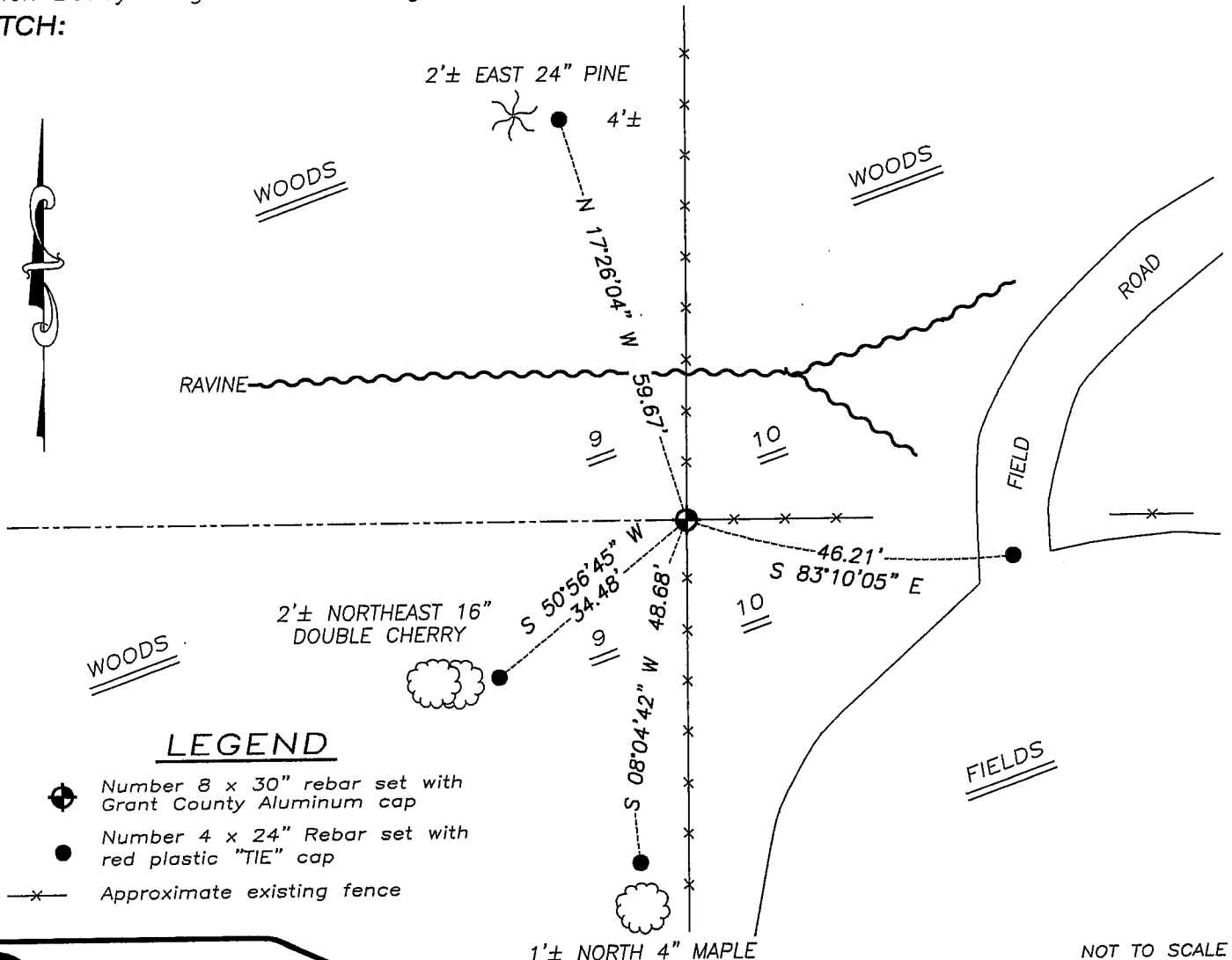
Corner was originally set in the first quarter of 1832 by Sibley. No other record of the corner was found.

CORNER EVIDENCE FOUND

I found and accepted an occupied fence corner as the best available evidence to the location of the corner. Verified this location using EDM & GPS methods.

DESCRIPTION OF CORNER AND WITNESS MONUMENTS, references and accessories used to perpetuate the original or re-established location of this corner. Witnesses to monument location Bobby Sedgwick & Brad Digman & Shane Austin

SKETCH:



LEGEND

- Number 8 x 30" rebar set with Grant County Aluminum cap
- Number 4 x 24" Rebar set with red plastic "TIE" cap
- x- Approximate existing fence



Austin Engineering LLC

4211 HWY 81 E, LANCASTER, WI 53813
 PHONE 608-723-6363 FAX 608-723-6702

JOB NUMBER OBS265
 FIELDBOOK: TDSR, 2803
 G:\T7NR1W\29
 H:\TIE\T6NR1W\37

DRAWN BY: SW AUSTIN
 APPROVED: LL AUSTIN

NOT TO SCALE