

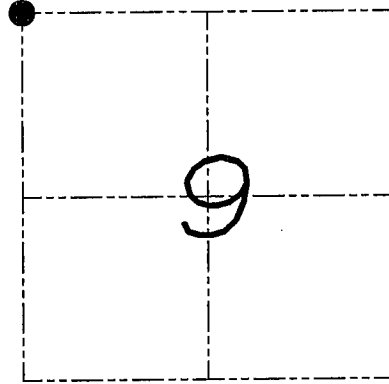
U.S. PUBLIC LAND SURVEY MONUMENT RECORD

Section 9, Town 6 North Range 1 West, Town of Wingville, Grant County, Wisconsin

CERTIFICATE

I, Larry L. Austin, do hereby certify that the corner location on this record was determined by me and/or under my direct supervision and that this U.S. public land survey monument record is correct and complete to the best of my knowledge and belief.

Larry L. Austin
 Larry L. Austin
 1903
 LANCASTER
 WI
 LAND SURVEYOR
 1.2.09
 date



● = CORNER LOCATION

HISTORY OF CORNER

Corner was originally set in the first quarter of 1832 by Sibley.
 No other record of the corner was found.

CORNER EVIDENCE FOUND

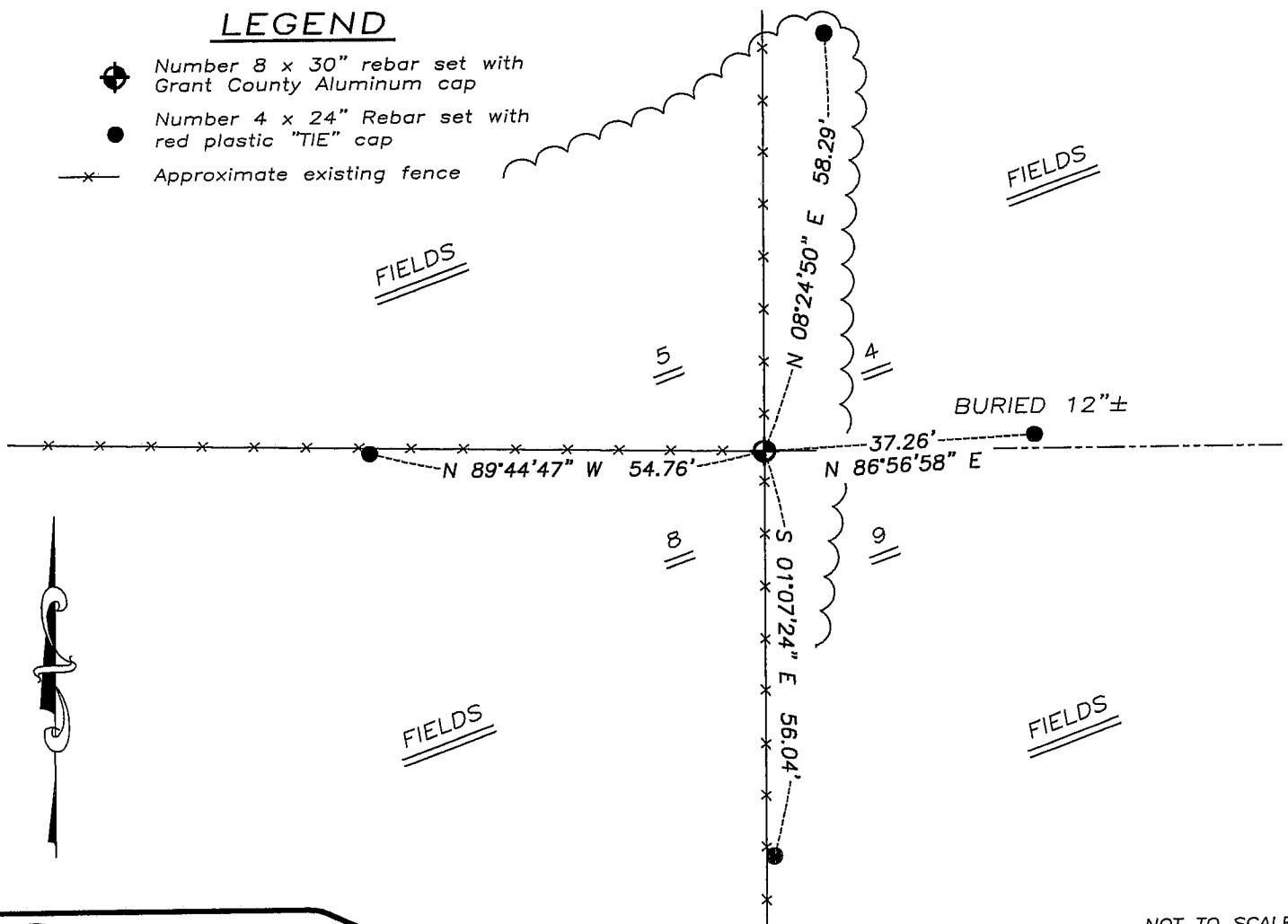
I found an occupied fence corner and accepted it's location after an EDM & GPS traverse of the area.

DESCRIPTION OF CORNER AND WITNESS MONUMENTS, references and accessories used to perpetuate the original or re-established location of this corner. Witnesses to monument location Bobby Sedgwick & Brad Digman & Shane Austin

SKETCH:

LEGEND

- ◆ Number 8 x 30" rebar set with Grant County Aluminum cap
- Number 4 x 24" Rebar set with red plastic "TIE" cap
- x— Approximate existing fence



NOT TO SCALE



Austin
 Engineering LLC

4211 HWY 81 E, LANCASTER, WI 53813
 PHONE 608-723-6363 FAX 608-723-6702

JOB NUMBER 08S265
 FIELDBOOK: TDSR, 2803
 G:\T7NR1W\29
 H:\TIE\T6NR1W\37

DRAWN BY: SW AUSTIN
 APPROVED: LL AUSTIN