

U.S. PUBLIC LAND SURVEY MONUMENT RECORD - IOWA COUNTY, WI

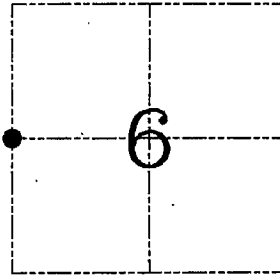
Section 6, Town 6 North Range 1 East, Town of Highland

CERTIFICATE

I, Larry L. Austin, do hereby certify that the corner location on this record was determined by me and/or under my direct supervision and that this U.S. public land survey monument record is correct and complete to the best of my knowledge and belief.

Dated this 13th day of January, 2005

Larry L. Austin S-1903



● = CORNER LOCATION

HISTORY OF CORNER ESTABLISHMENT

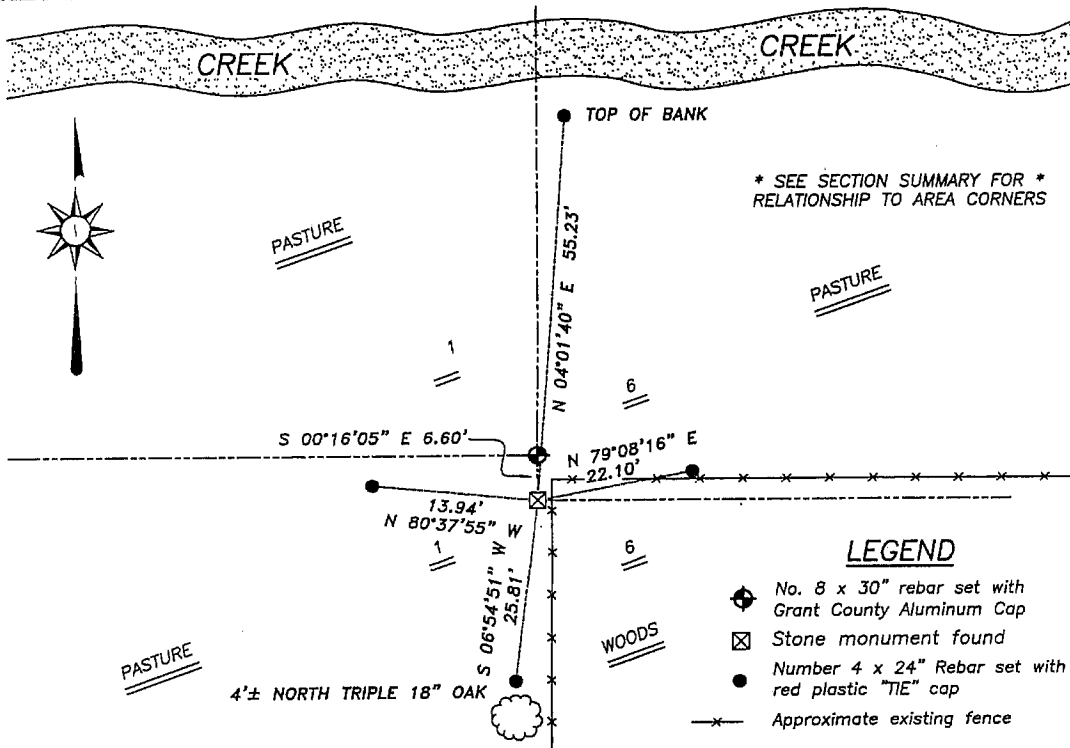
Corner was never originally set. In 1894 a survey was performed in this section by the Iowa County Surveyor.

DESCRIPTION OF CORNER EVIDENCE FOUND

I found an existing stone monument at this location and verified it's location after an EDM & GPS traverse of the area.

DESCRIPTION OF CORNER AND WITNESS MONUMENTS, references and accessories used to perpetuate the original or re-established location of this corner. Witnesses to corner location Bobby Sedgwick & Brad Digman & Shane Austin

SKETCH:



* SEE SECTION SUMMARY FOR * RELATIONSHIP TO AREA CORNERS

LEGEND

- No. 8 x 30" rebar set with Grant County Aluminum Cap
Stone monument found
Number 4 x 24" Rebar set with red plastic "TIE" cap
Approximate existing fence

SKETCH NOT TO SCALE



Austin Engineering LLC

4211 HWY 81 E, LANCASTER, WI 53813
PHONE 608-723-8383 FAX 608-723-8702

JOB NUMBER: 05S288-ESSER
FIELDBOOK: TDSR, 2514
G:\T6NR1W\01
H:\TIE\T6NR1E\14

DRAWN BY: SW AUSTIN
APPROVED: LL AUSTIN