

# GRANT COUNTY

## Survey Monument Record

*Cattle Rock Loop*

TYPE OF MONUMENT 1" Sq. x 36" Steel Rod  
 STATE PLANE COORDINATES: N \_\_\_\_\_  
 E \_\_\_\_\_  
 ELEVATION — M.S.L. DATUM: \_\_\_\_\_  
 THETA ANGLE: \_\_\_\_\_  
 FIELD BOOK: \_\_\_\_\_  
 PAGE \_\_\_\_\_

CORNER NO. 133  
 SECTION 31  
 TOWN 7 N  
 RANGE 1 W

### BASIS FOR MONUMENT LOCATION

(Use reverse side if necessary)

Show info such as: History of corner, with reference to Vol. and pg., dates, surveyor; exact description of monument replaced; if location computed, by taped or EDM traverse; landowner, remarks, etc.

Monument destroyed by road construction and reset from ties to a survey by David D. Eisele dated 1971.

SEAL:



LOCATION  
(Indicated by "X")



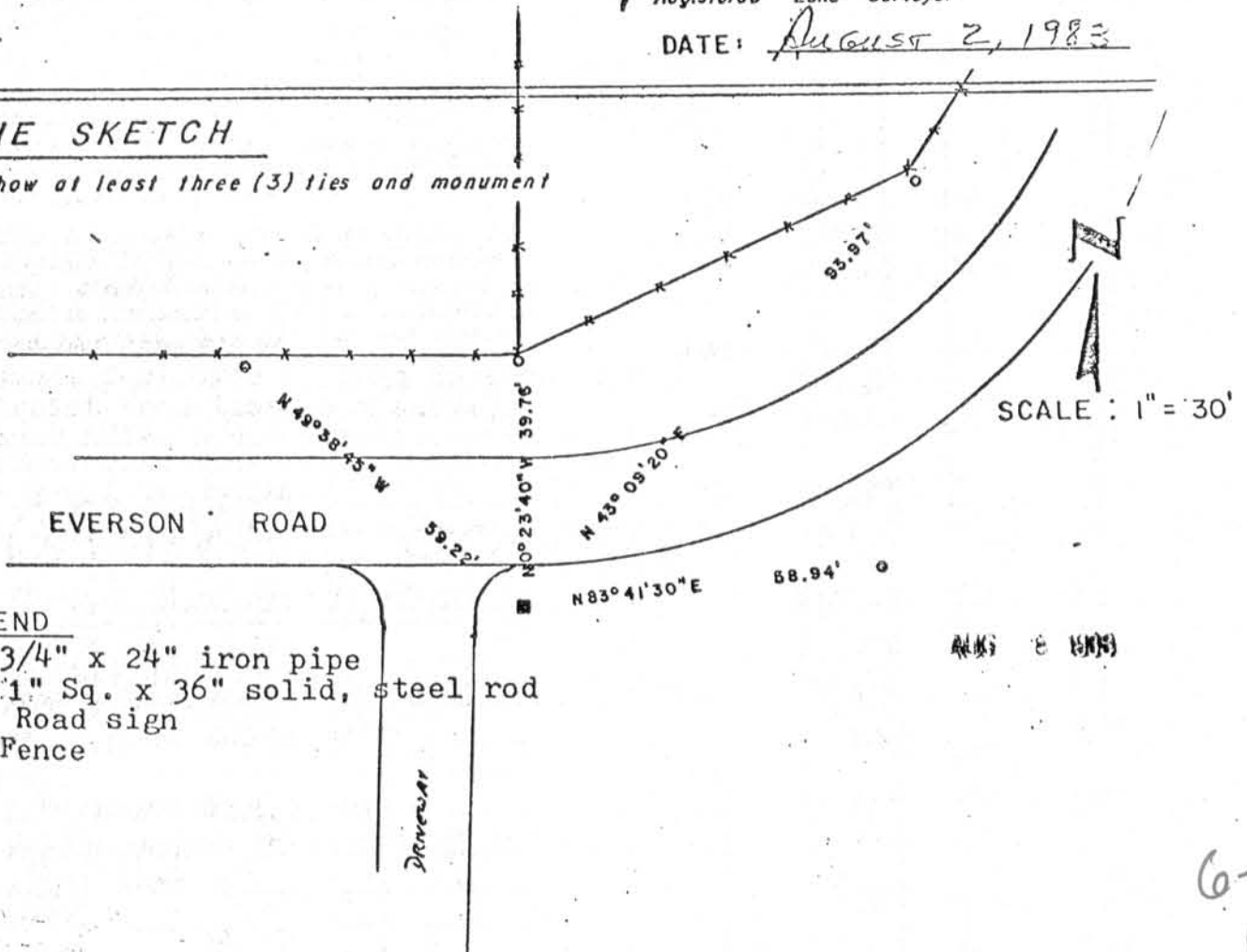
CERTIFIED CORRECT

*Bruce D. Bowden*  
 Registered Land Surveyor

DATE: August 2, 1983

### TIE SKETCH

Show at least three (3) ties and monument



### LEGEND

- 3/4" x 24" iron pipe
- 1" Sq. x 36" solid, steel rod
- Road sign
- \*— Fence

6-1  
 (B)