

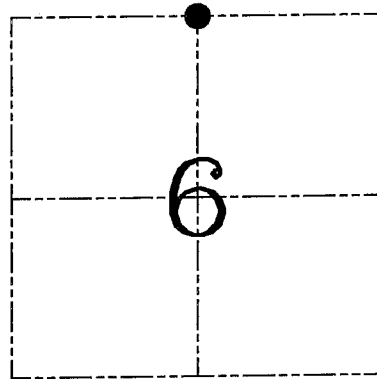
U.S. PUBLIC LAND SURVEY MONUMENT RECORD – GRANT COUNTY, WI
Section 6, Town 6 North Range 1 West, Town of Wingville

CERTIFICATE

I, Larry L. Austin, do hereby certify that the corner location on this record was determined by me and/or under my direct supervision and that this U.S. public land survey monument record is correct and complete to the best of my knowledge and belief.

Dated this 5th day of March, 2005

Larry L. Austin
 Larry L. Austin

● = CORNER LOCATION

HISTORY OF CORNER ESTABLISHMENT

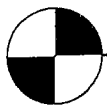
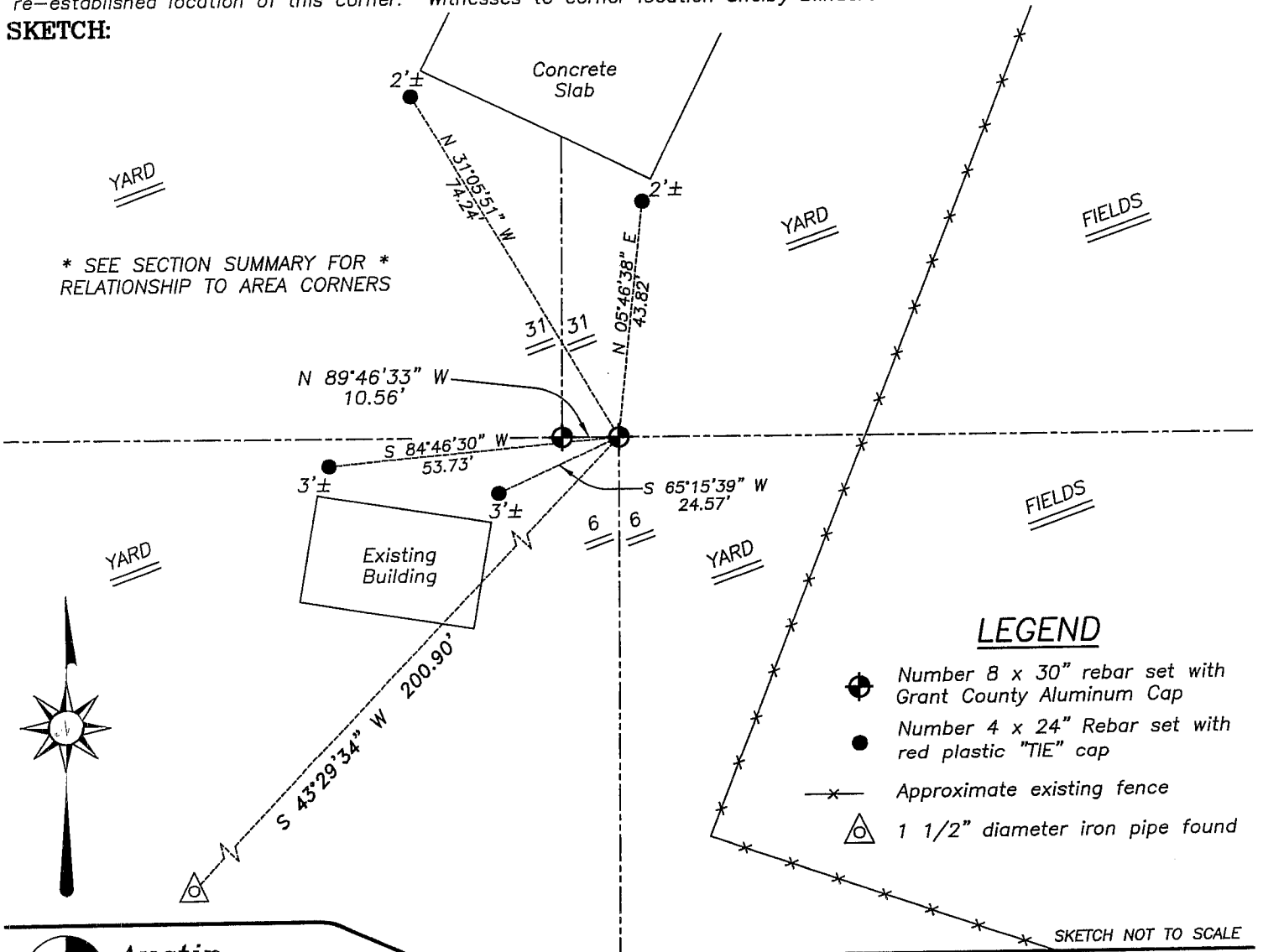
Corner was never originally set.
 No other record of the corner was found.

DESCRIPTION OF CORNER EVIDENCE FOUND

I reset the corner at the correct offset from the South 1/4 of Section 31, T7N R1W. Verified this location using EDM & GPS methods.

DESCRIPTION OF CORNER AND WITNESS MONUMENTS, references and accessories used to perpetuate the original or re-established location of this corner. Witnesses to corner location Shelby Blindert & Brad Hazen.

SKETCH:



Austin Engineering LLC

4211 HWY 81 E, LANCASTER, WI 53813
 PHONE 608-723-6363 FAX 608-723-6702

JOB NUMBER: 01s054
 FIELDBOOK: TDSR, 2502
 G:\T7NR2W\35
 H:\TIE\T6NR1W\12

DRAWN BY: BJ HAZEN
 APPROVED: LL AUSTIN