

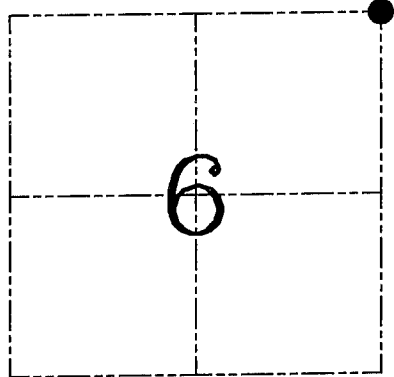
U.S. PUBLIC LAND SURVEY MONUMENT RECORD – GRANT COUNTY, WI
Section 6, Town 6 North Range 1 West, Town of Wingville

CERTIFICATE

I, Larry L. Austin, do hereby certify that the corner location on this record was determined by me and/or under my direct supervision and that this U.S. public land survey monument record is correct and complete to the best of my knowledge and belief.

Dated this 5th day of March, 2005.

Larry L. Austin
 Larry L. Austin S-1903



● = CORNER LOCATION

HISTORY OF CORNER ESTABLISHMENT

Corner was originally set in 1833 by Sibley. In 1983 Bowden set a 1 1/2" iron pipe at an occupied fence corner. No other record of the corner was found.

DESCRIPTION OF CORNER EVIDENCE FOUND

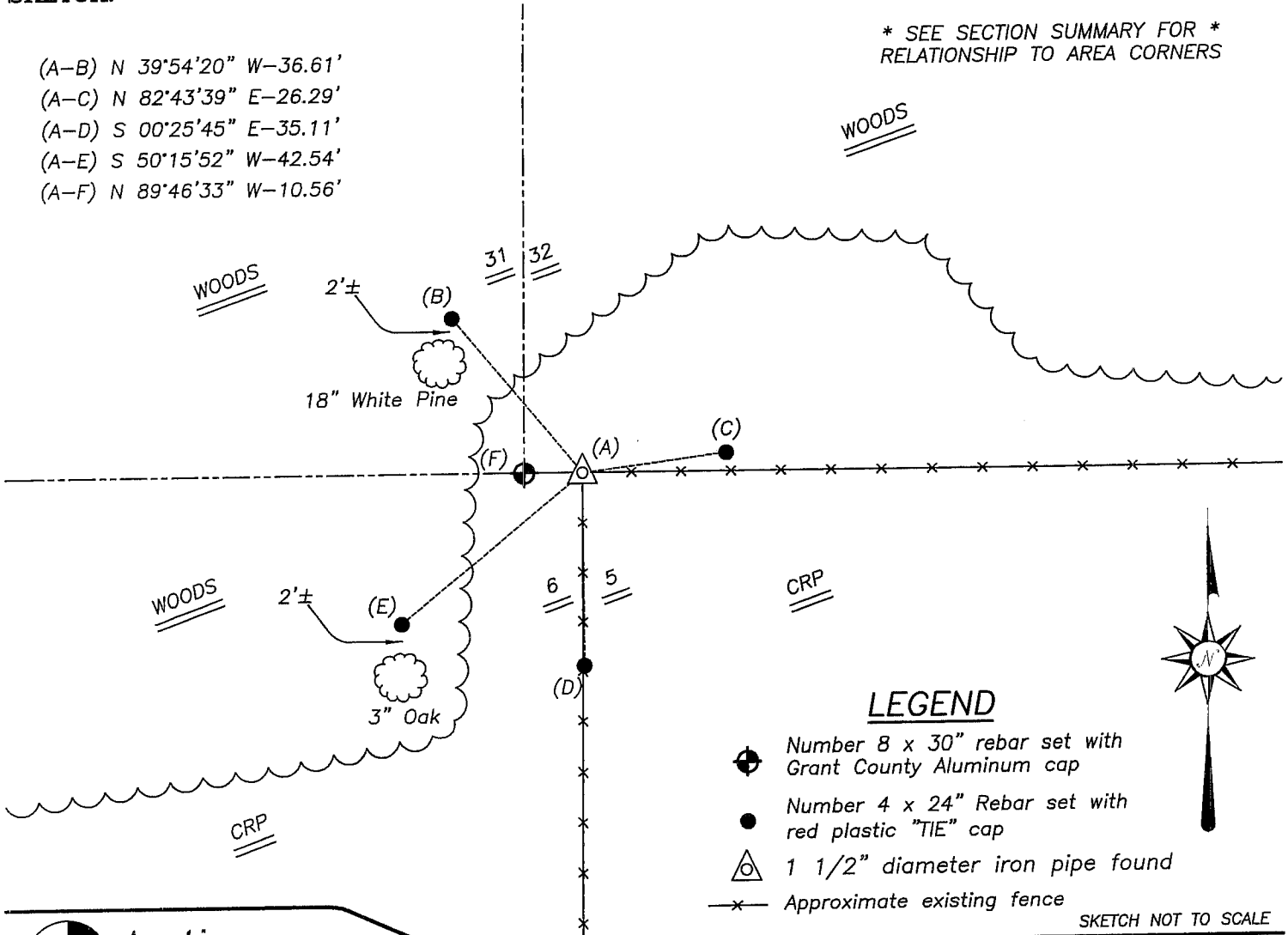
I found and accepted the 1 1/2" iron pipe. Verified this location using EDM & GPS methods.

DESCRIPTION OF CORNER AND WITNESS MONUMENTS, references and accessories used to perpetuate the original or re-established location of this corner. Witnesses to corner location Shelby Blindert and Brad Hazen.

SKETCH:

- (A-B) N 39°54'20" W-36.61'
- (A-C) N 82°43'39" E-26.29'
- (A-D) S 00°25'45" E-35.11'
- (A-E) S 50°15'52" W-42.54'
- (A-F) N 89°46'33" W-10.56'

* SEE SECTION SUMMARY FOR *
 RELATIONSHIP TO AREA CORNERS



Austin Engineering LLC
 4211 HWY 81 E, LANCASTER, WI 53813
 PHONE 608-723-6363 FAX 608-723-6702

JOB NUMBER 01S054
 FIELDBOOK: TDSR, 2502
 G:\T7NR2W\35
 H:\TIE\T6NR1W\11

DRAWN BY: BJ HAZEN
 APPROVED: LL AUSTIN