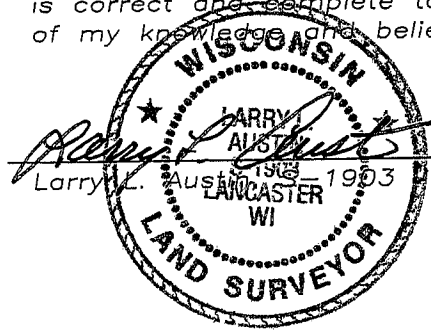


U.S. PUBLIC LAND SURVEY MONUMENT RECORD

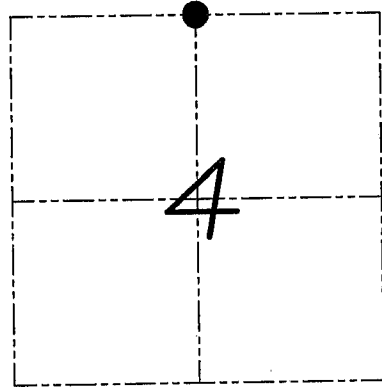
Section 4, Town 6 North Range 1 West, Town of Wingsville, Grant County, Wisconsin

CERTIFICATE

I, Larry L. Austin, do hereby certify that the corner location on this record was determined by me and/or under my direct supervision and that this U.S. public land survey monument record is correct and complete to the best of my knowledge and belief.



10-15-08
date



● = CORNER LOCATION

HISTORY OF CORNER

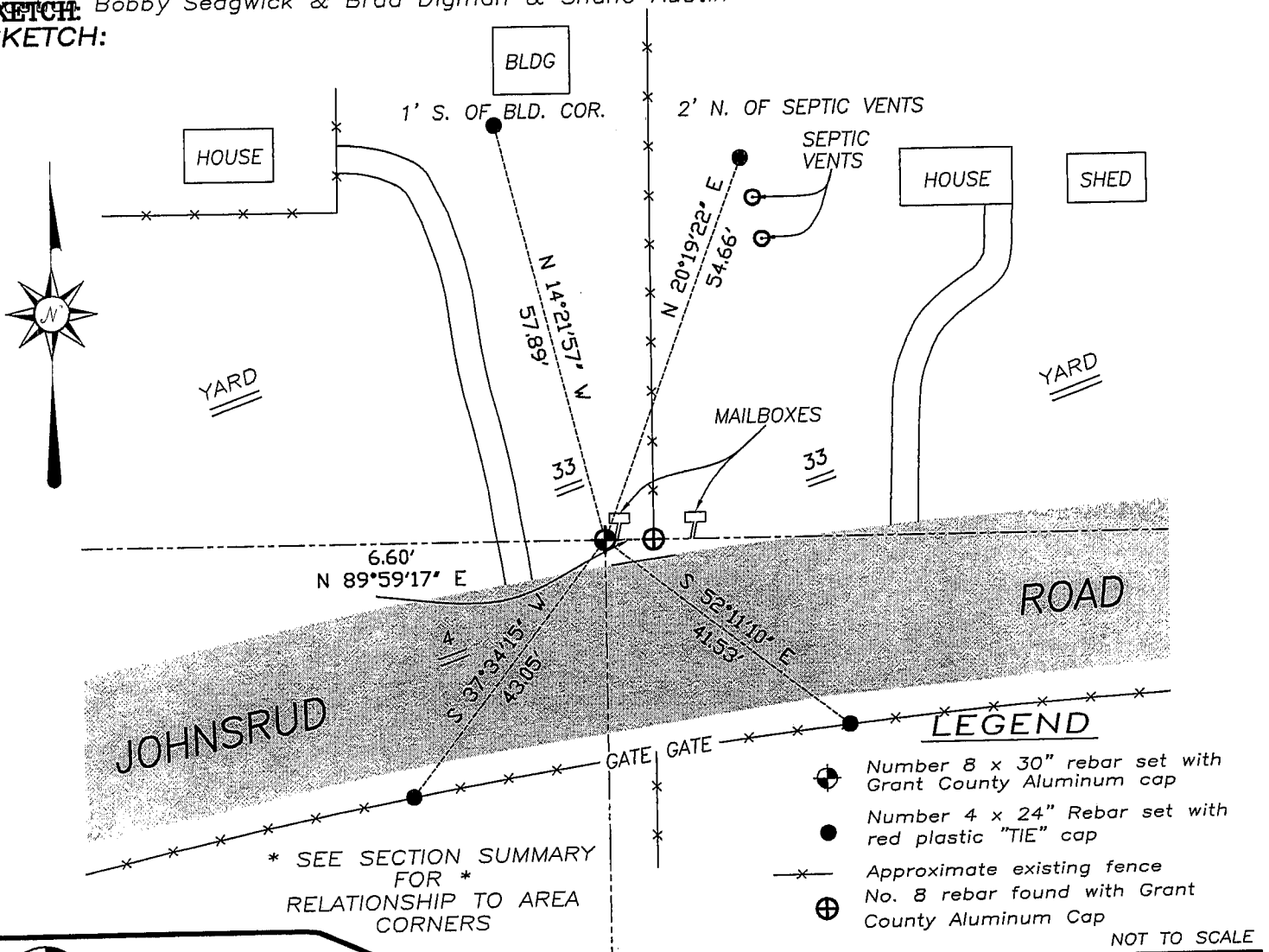
Corner was never originally set.
No other record of the corner was found.

CORNER EVIDENCE FOUND

I set the corner at the proportioned offset from the existing South 1/4 corner of Section 33. Verified this location using EDM & GPS methods.

DESCRIPTION OF CORNER AND WITNESS MONUMENTS, references and accessories used to perpetuate the original or re-established location of this corner. Witnesses to monument set by Bobby Sedgwick & Brad Digman & Shane Austin

SKETCH:
SKETCH:



* SEE SECTION SUMMARY FOR *
RELATIONSHIP TO AREA CORNERS

LEGEND

- (with cap symbol) Number 8 x 30" rebar set with Grant County Aluminum cap
- (solid) Number 4 x 24" Rebar set with red plastic "TIE" cap
- x- Approximate existing fence
- ⊕ No. 8 rebar found with Grant County Aluminum Cap

NOT TO SCALE



Austin Engineering LLC

4211 HWY 81 E, LANCASTER, WI 53813
PHONE 608-723-6363 FAX 608-723-6702

JOB NUMBER 07S339
FIELDBOOK: TDSR,
G:\T7NR1W\29
H:\TIE\T6NR1W\08

DRAWN BY: BL STANFLEY
APPROVED: LL AUSTIN

08