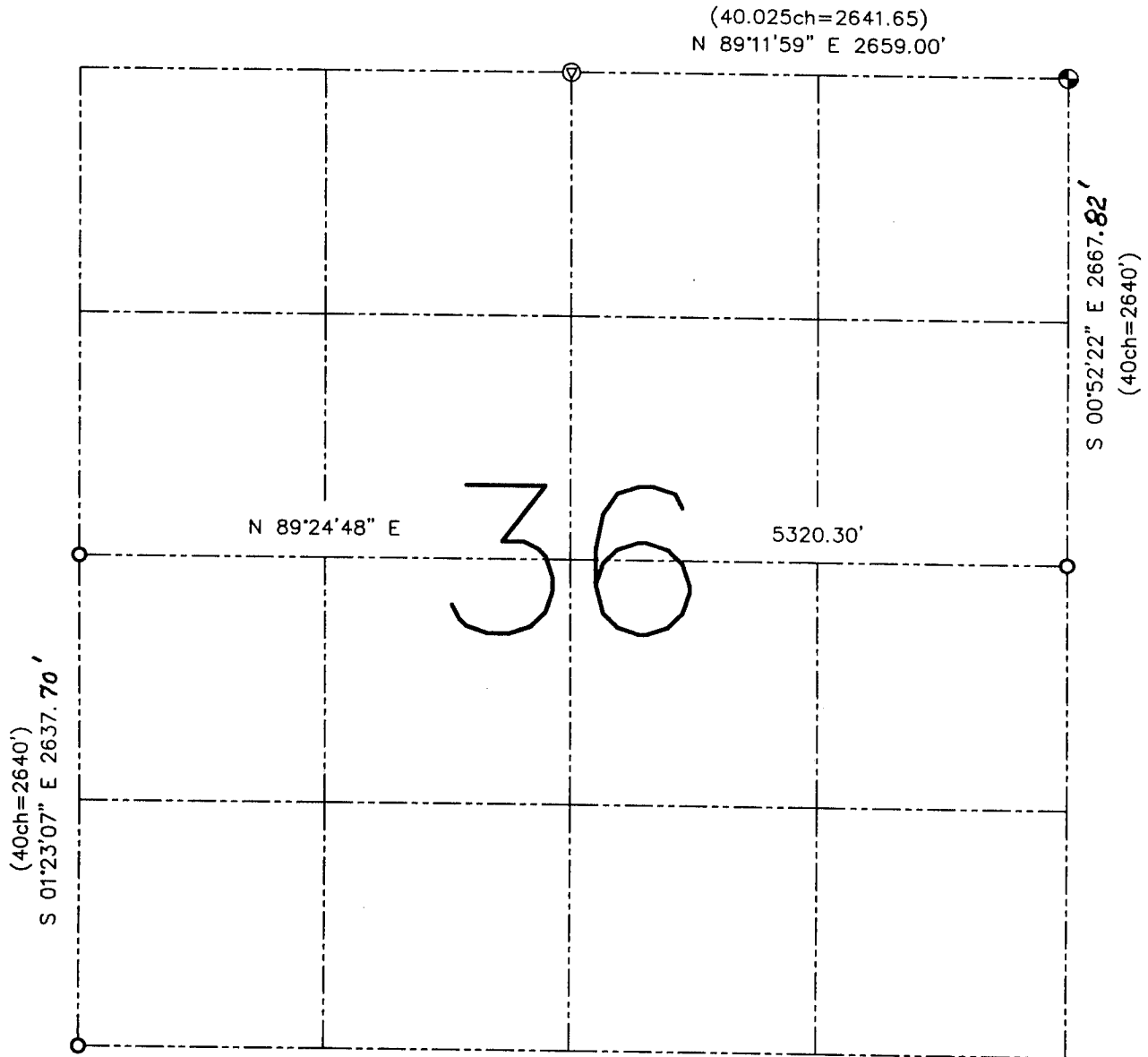


U.S. PUBLIC LAND SURVEY MONUMENT RECORD – GRANT COUNTY, WI

Summary of Section 36, Town 5 North, Range 6 West, Town of Bloomington

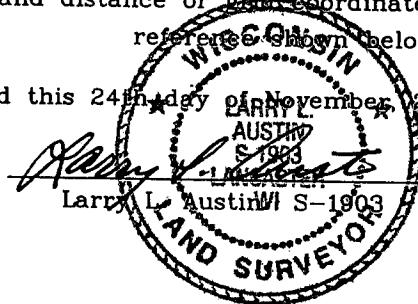


LEGEND

- ⊙ No. 8 x 30" rebar set with Grant County Aluminum Cap – wt=2.67#/l.f.
- No. 6 rebar found
- ⊖ Railroad spike found
- () Recorded as
- x— Approximate location of existing fence

Relationship of all section corners to other section corners shall be shown hereon by bearing and distance or grid coordinates. Bearing reference shown below.

Dated this 24th day of November, 2002



Bearings referenced to the East-West Quarter line of this Section, which is assumed to bear N 89° 24' 48" E.

SKETCH NOT TO SCALE

AUSTIN ENGINEERING, LLC
 4211 HWY 81 EAST, LANCASTER, WI 53813
 PHONE 608-723-6363 FAX 608-723-6702

FIELDBOOK: SDR33, 2235
 G: \T5NR6W\34
 C: \SWA\TIE\T5NR5W\113

CREW: BS-SB-SA-BD
 DRAWN BY: SW AUSTIN
 APPROVED: LL AUSTIN