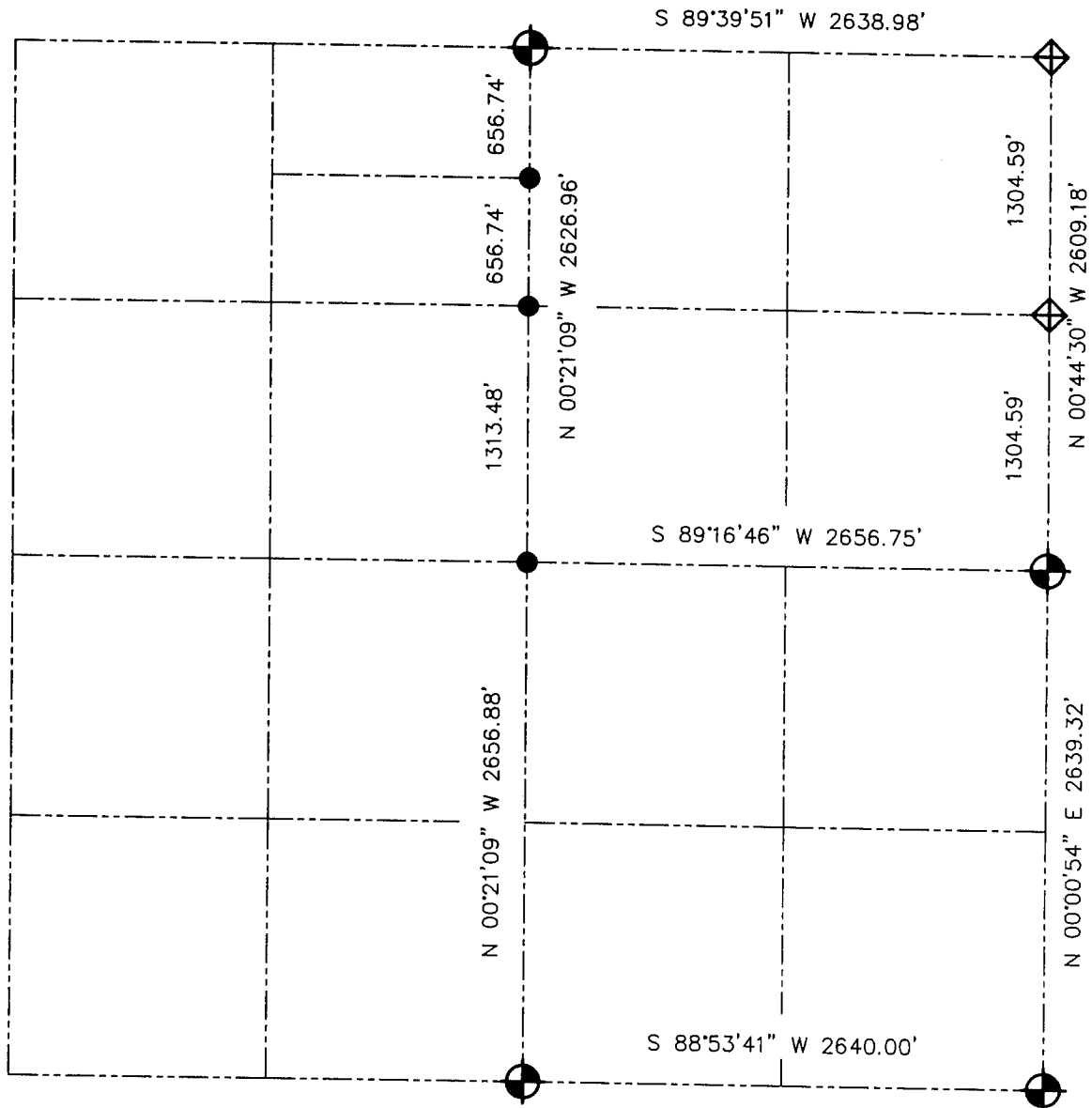






**U.S. PUBLIC LAND SURVEY MONUMENT RECORD - GRANT COUNTY, WI**  
 Summary of Section 34, Town 5 North Range 6 West, Town of Bloomington

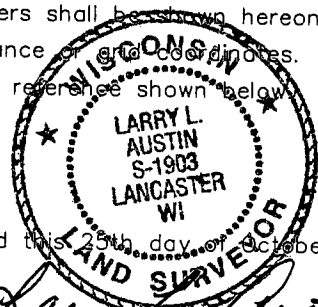


**LEGEND**

-  NUMBER 8 x 30" REBAR SET WITH GRANT COUNTY ALUMINUM CAP
-  NUMBER 6 x 24" REBAR SET WITH YELLOW PLASTIC SURVEY CAP
-  CONCRETE MONUMENT FOUND
-  NUMBER 8 REBAR FOUND WITH GRANT COUNTY ALUMINUM CAP
- ( ) RECORDED AS



Relationship of all section corners to other section corners shall be shown hereon by bearing and distance of grid coordinates. Bearing reference shown below.



Dated this 25th day of October, 2001

*Larry L. Austin*  
 Larry L. Austin S-1903

Bearings referenced to the East line of the Northeast Quarter of Section 34, which is assumed to bear N 00°44'30" W.

SKETCH NOT TO SCALE

**AUSTIN ENGINEERING, LLC**

4211 HWY 81 EAST, LANCASTER, WI 53813  
 PHONE 608-723-6363 FAX 608-723-6702

FIELDBOOK: SDR33, 2106, 2107,  
 G:\T5NR6W\34 2041  
 C:\SWA\TIE\T5NR6W\34SUM

CREW: BS-SB-SA-TF  
 DRAWN BY: SW AUSTIN  
 APPROVED: LL AUSTIN