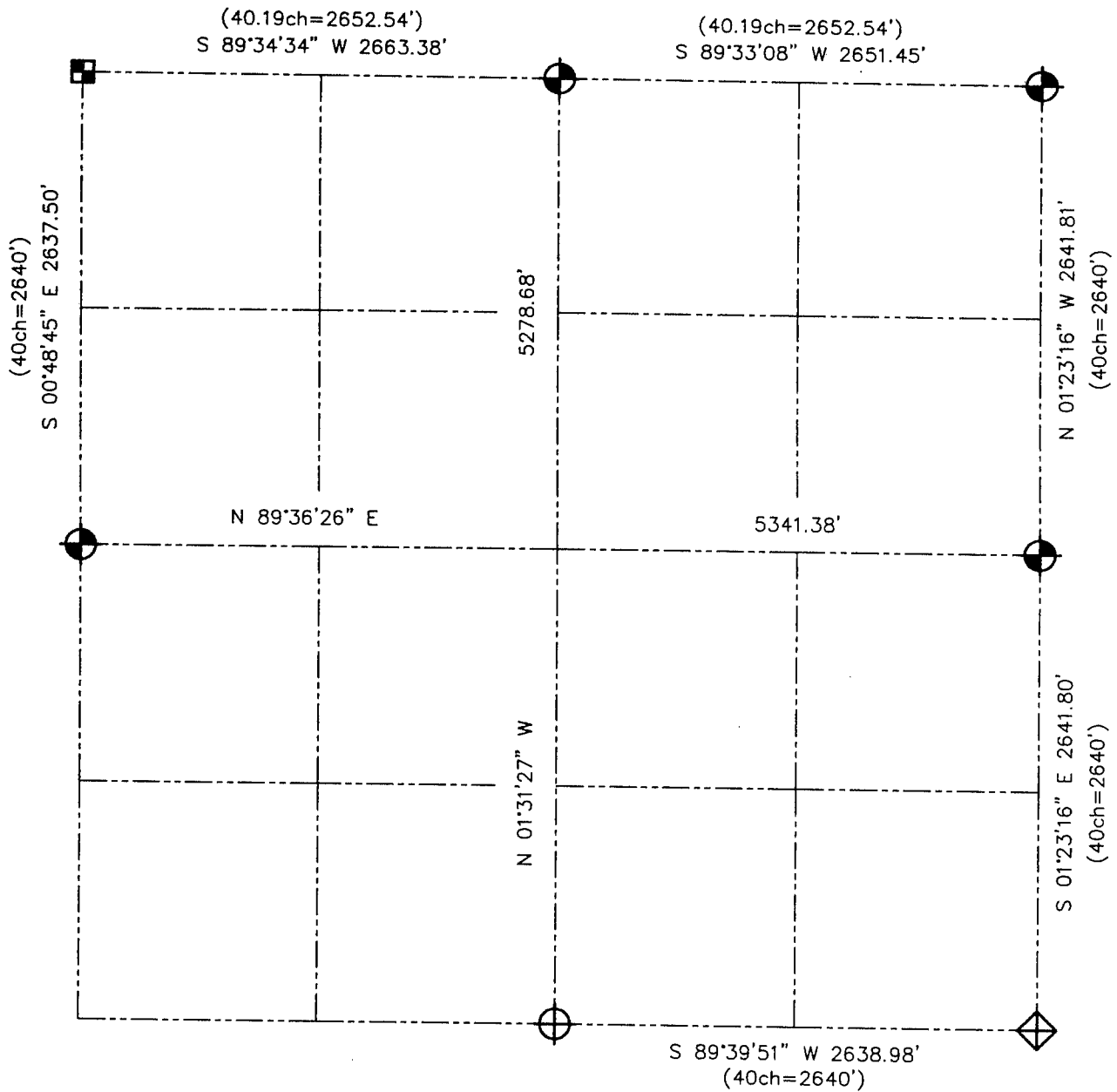






**U.S. PUBLIC LAND SURVEY MONUMENT RECORD – GRANT COUNTY, WI**  
 Summary of Section 27, Town 5 North Range 6 West, Town of Bloomington



**LEGEND**

-  NUMBER 8 x 30" REBAR SET WITH GRANT COUNTY ALUMINUM CAP
-  CONCRETE MONUMENT FOUND
-  ALUMINUM MONUMENT FOUND WITH GRANT COUNTY ALUMINUM CAP
- ( ) RECORDED AS
-  NUMBER 8 REBAR FOUND WITH GRANT COUNTY ALUMINUM CAP



Relationship of all section corners to other section corners shall be shown hereon by bearing and distance or grid coordinates. Bearing reference shown below.



Bearings referenced to the North-South 1/4 line of Section 27, which is assumed to bear N 01°31'27" W.

SKETCH NOT TO SCALE

**AUSTIN ENGINEERING, LLC**

4211 HWY 81 EAST, LANCASTER, WI 53813  
 PHONE 608-723-6363 FAX 608-723-6702

FIELDBOOK: SDR33, 2106  
 G: \T5NR6W\34  
 C: \SWA\TIE\T5NR6W\27SUM

CREW: BS-SB-SA-TF  
 DRAWN BY: SW AUSTIN  
 APPROVED: LL AUSTIN