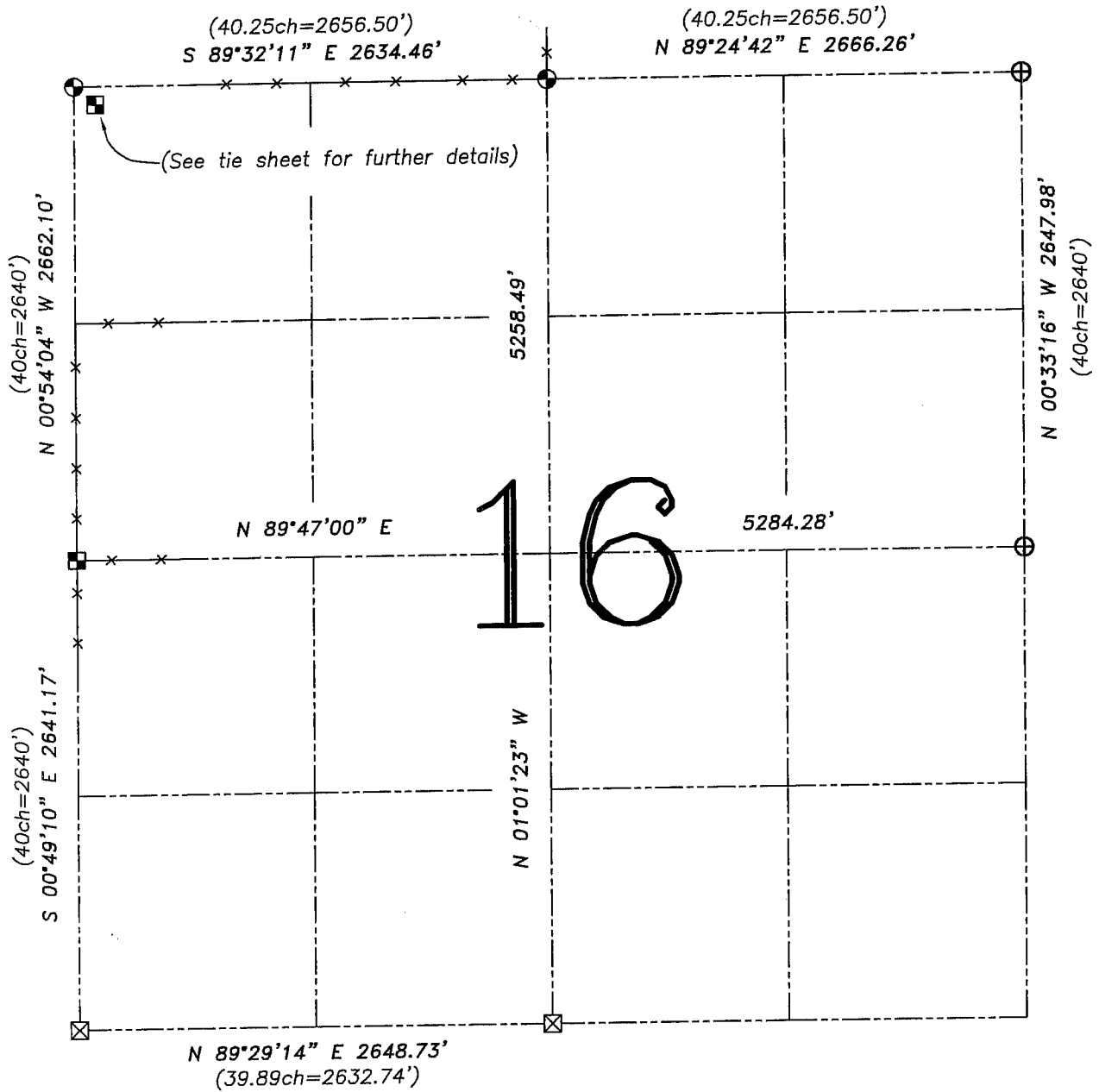


**U.S. PUBLIC LAND SURVEY MONUMENT RECORD – GRANT COUNTY, WI**

**Summary of Section 16, Town 5 North, Range 6 West, Town of Wyalusing**



**LEGEND**

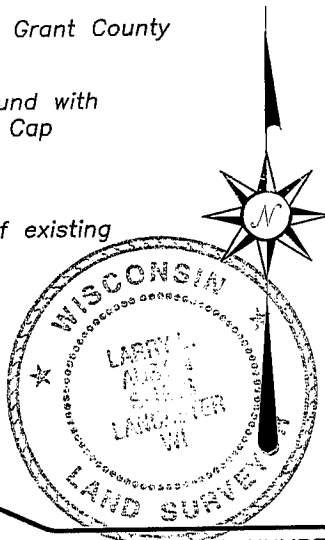
- ⊙ No. 8 x 30" rebar set with Grant County Aluminum Cap – wt=2.67#/l.f.
- ⊕ No. 8 rebar found with Grant County Aluminum Cap
- Aluminum Monument found with Grant County Aluminum Cap
- ( ) Recorded as
- x— Approximate location of existing fence
- ⊠ Stone monument found

Relationship of all section corners to other section corners shall be shown hereon by bearing and distance or grid coordinates. Bearing reference shown below.

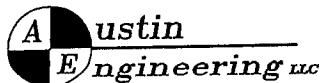
Dated this 24th day of October, 2005

*Larry L. Austin*  
Larry L. Austin S-1903

Bearings referenced to the West line of the NW 1/4 of Section 16 which is assumed to bear N 00°54'04" W.



SKETCH NOT TO SCALE



4211 HWY 81 E, LANCASTER, WI 53813  
PHONE 608-723-6363 FAX 608-723-6702

JOB NUMBER: 04S186  
FIELDBOOK: 2326  
G:\T5NR6W\14  
H:\TIE\T5NR6W\16SUM

DRAWN BY: JP ADAMS  
APPROVED: LL AUSTIN