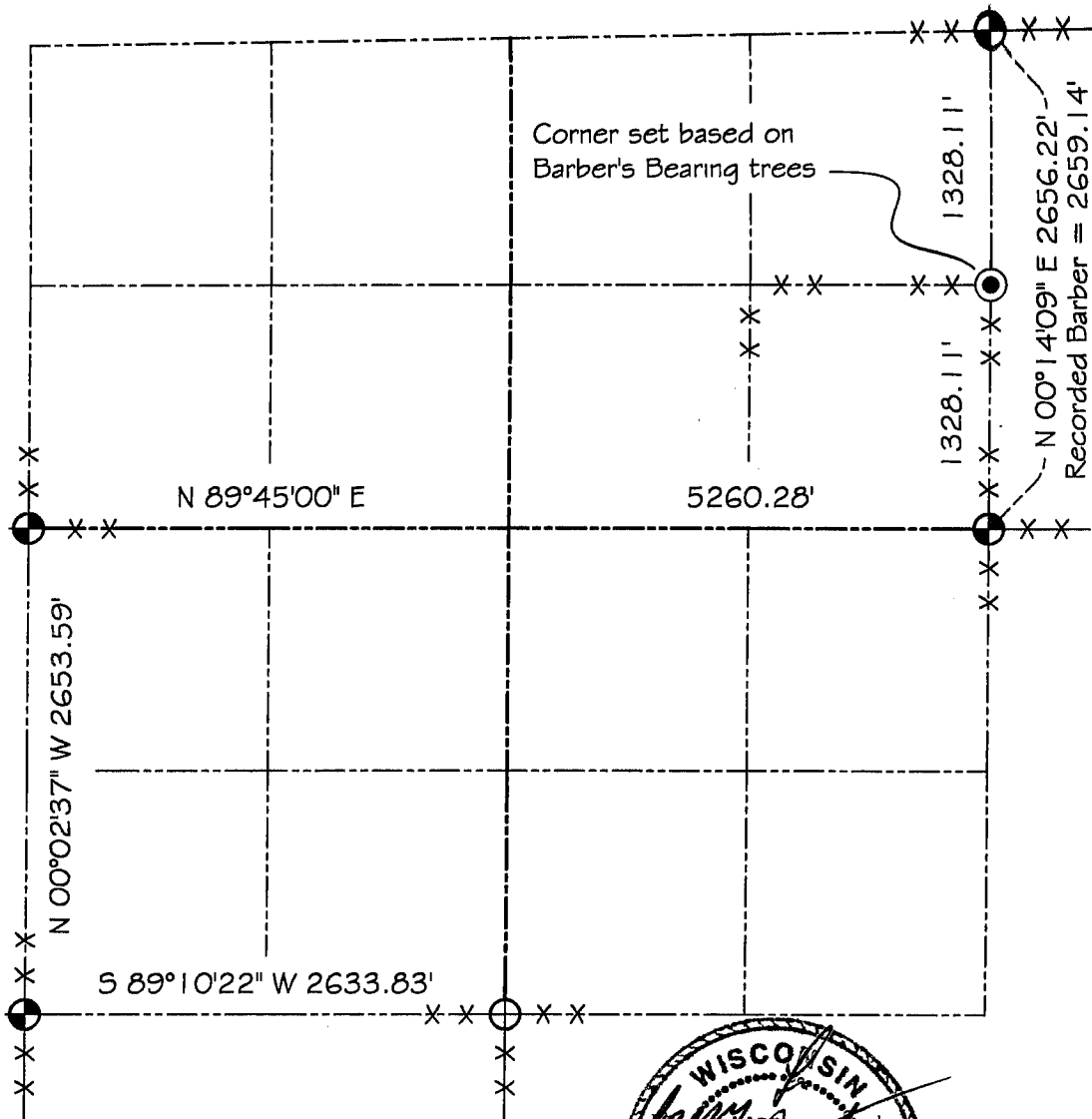





GRANT COUNTY

SECTION SUMMARY

$\frac{11}{SECTION} - \frac{5N}{TOWN} - \frac{6W}{RANGE}$



LEGEND

-  NO. 8 X 30" REBAR SET WITH GRANT COUNTY ALUMINUM CAP
-  NO. 8 REBAR FOUND WITH GRANT COUNTY ALUMINUM CAP
-  NO. 6 X 24" REBAR SET WITH CAP

NOTE:

Relationships of all section corners to other section corners shall be shown hereon by bearing and distance or grid coordinates
 Show or describe bearing reference



Bearings referenced to the East-West 1/4 line of Section 11, which is assumed to bear S 89°45'00" E.