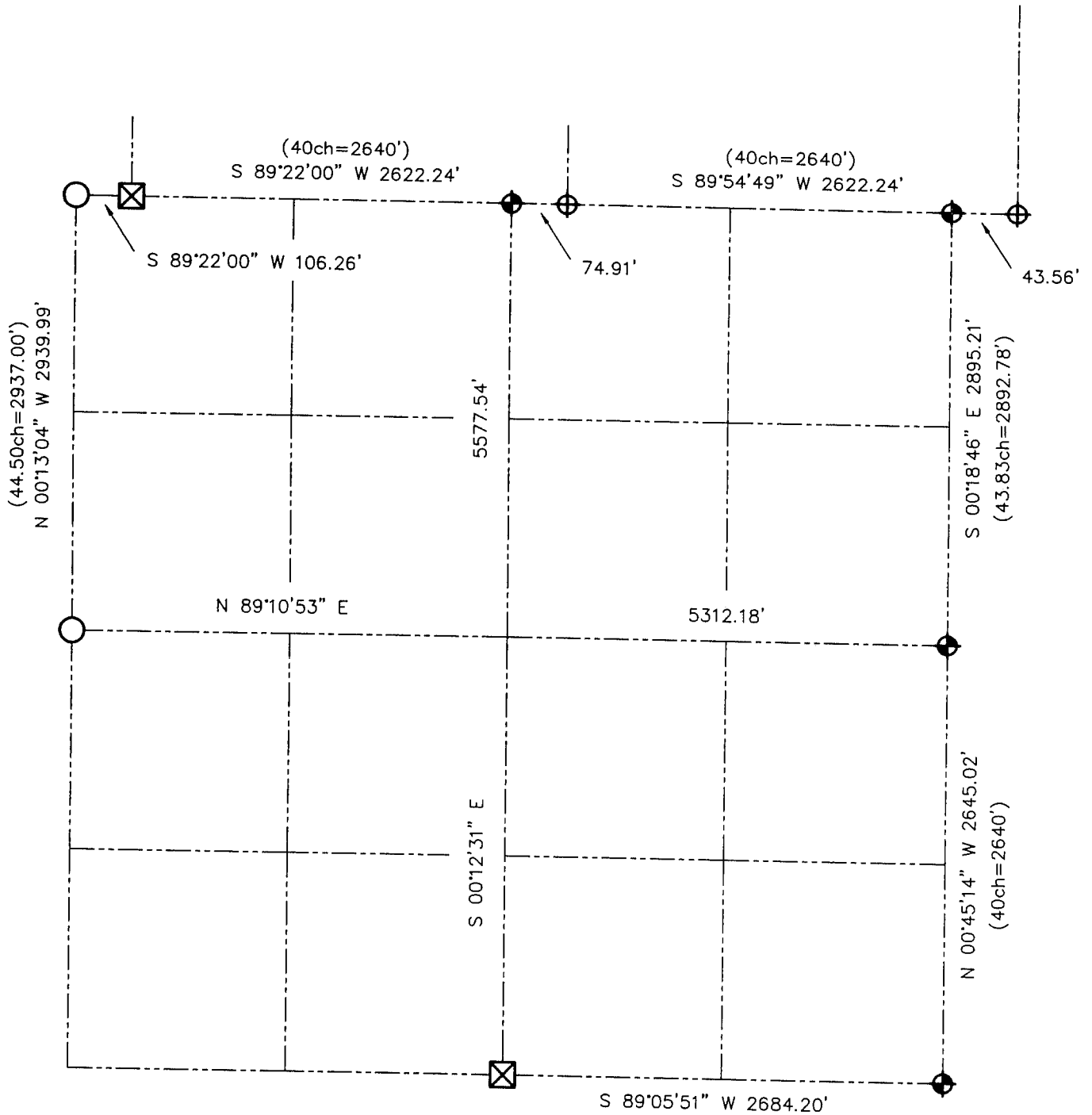


**U.S. PUBLIC LAND SURVEY MONUMENT RECORD - GRANT COUNTY, WI**  
 Summary of Section 4, Town 5 North Range 6 West, Town of Wyalusing



**LEGEND**

- NUMBER 8 x 30" REBAR SET WITH GRANT COUNTY ALUMINUM CAP
- NUMBER 8 REBAR FOUND WITH GRANT COUNTY ALUMINUM CAP
- STONE FOUND
- NUMBER 6 IRON BAR FOUND
- RECORDED AS



Relationship of all section corners to other section corners shall be shown hereon by bearing and distance or grid coordinates. Bearing reference shown below.

Dated this 18th day of September, 2001  
*Larry L. Austin*  
 Larry L. Austin, S-1903

Bearings referenced to the East-West 1/4 line of Section 04, which is assumed to bear N 89°10'53" E.

SKETCH NOT TO SCALE

**AUSTIN ENGINEERING, LLC**

4211 HWY 81 EAST, LANCASTER, WI 53813  
 PHONE 608-723-6363 FAX 608-723-6702

FIELDBOOK: SDR33, 2042  
 G: \T6NR6W\33A  
 C: \SWA\TIE\T5NR6W\04SUM

CREW: BS-SB-SA-TF  
 DRAWN BY: SW AUSTIN  
 APPROVED: LL AUSTIN