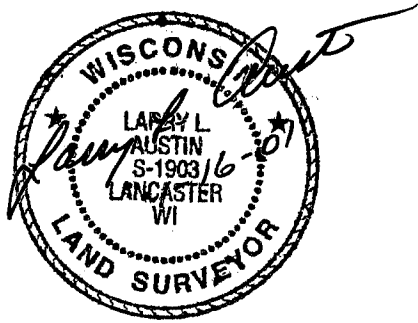
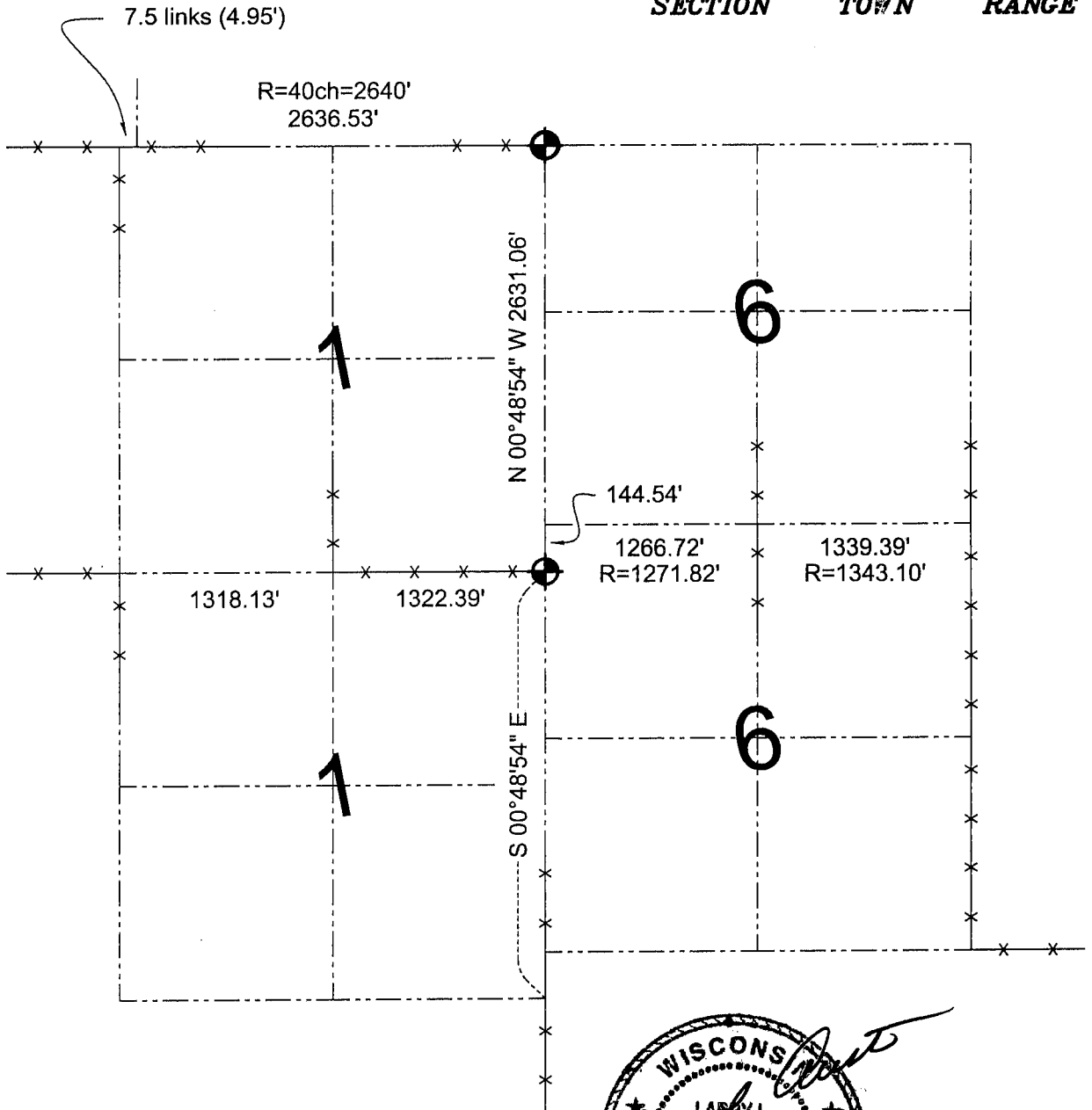


# GRANT COUNTY SECTION SUMMARY

1 - 5N - 6W  
**SECTION      TOWN      RANGE**



### LEGEND

- Number 8 x 30" rebar set with Grant County Aluminum Cap
- Existing fence location

### NOTE:

Relationships of all section corners to other section corners shall be shown hereon by bearing and distance or grid coordinates.  
 ~Bearing reference below~



Bearings referenced to the East line of the Northeast Quarter of Section 1, which is assumed to bear N 00°48'54" W.

**AUSTIN ENGINEERING, LLC**  
 4211 HWY 81 E, LANCASTER, WI 53813  
 PHONE 608-723-6363 FAX 608-723-6702

FIELDBOOK: SDR33, 9814  
 G:\T5N66W\01  
 C:\SC14\SWA\TIE\T5NR6W\01SUM

DRAWN BY: SW AUSTIN  
 APPROVED: LL AUSTIN  
 CREW: BS - SB - SA - TF