

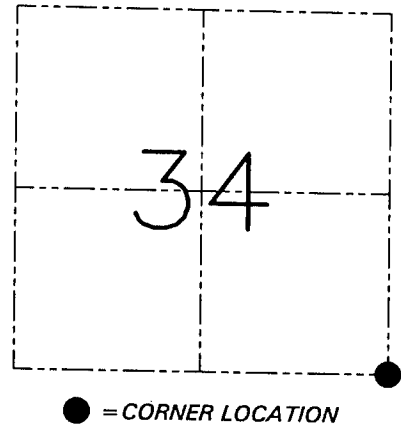
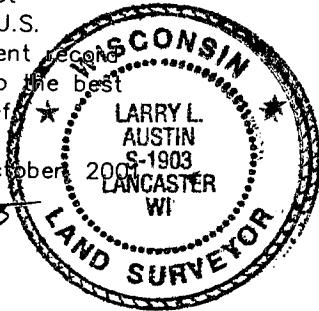
U.S. PUBLIC LAND SURVEY MONUMENT RECORD - GRANT COUNTY, WI
 Section 34, Town 5 North Range 6 West, Town of Bloomington

CERTIFICATE

I, Larry L. Austin, do hereby certify that the corner location on this record was determined by me and/or under my direct supervision and that this U.S. public land survey monument location is correct and complete to the best of my knowledge and belief.

Dated this 25th day of October, 2005

Larry L. Austin S-1903



HISTORY OF CORNER ESTABLISHMENT

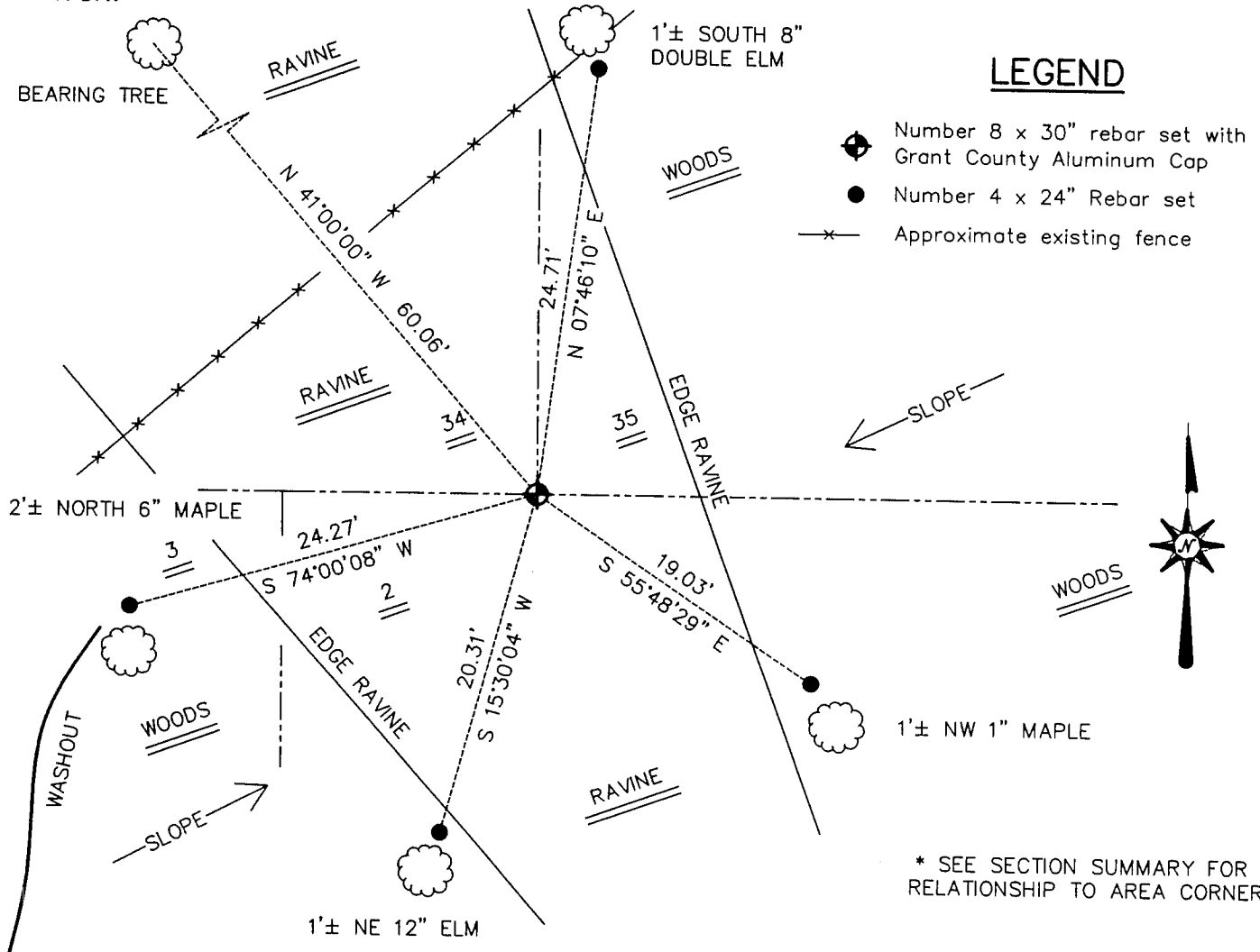
Corner was originally set in 1832 by Sibley. Kenneth Cullen shows the corner on his 1962 plat with no dimensions.

DESCRIPTION OF CORNER EVIDENCE FOUND

I reset the corner based on an original bearing tree and verified it's location to adjoining corners using EDM & GPS methods.

DESCRIPTION OF CORNER AND WITNESS MONUMENTS, references and accessories used to perpetuate the original or re-established location of this corner. Witnesses to the corner location Bobby Sedgwick & Shane Austin & Tim Fauver

SKETCH:



* SEE SECTION SUMMARY FOR *
 RELATIONSHIP TO AREA CORNERS

SKETCH NOT TO SCALE

AUSTIN ENGINEERING, LLC
 4211 HWY 81 EAST, LANCASTER, WI 53813
 PHONE 608-723-6363 FAX 608-723-6702

FIELDBOOK: SDR33, 2106, 2107, 2041
 G: \T5NR6W\34
 C: \SWA\TIE\T5NR6W\125
 CREW: BS-SB-SA-TF

DRAWN BY: SW AUSTIN
 APPROVED: LL AUSTIN

CORNER NUMBER 125