

**U.S. PUBLIC LAND SURVEY MONUMENT RECORD – GRANT COUNTY, WI**

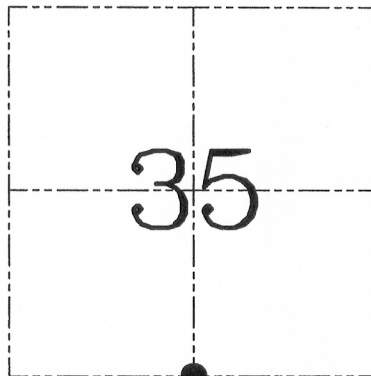
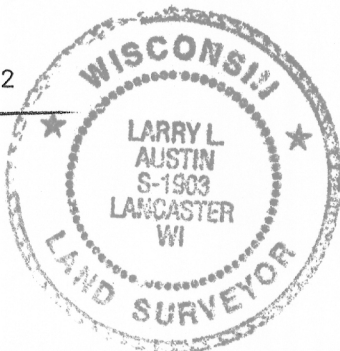
**Section 35, Town 5 North, Range 6 West, Town of Bloomington**

**CERTIFICATE**

I, Larry L. Austin, do hereby certify that the corner location on this record was determined by me and/or under my direct supervision and that this U.S. public land survey monument record is correct and complete to the best of my knowledge and belief.

Dated this 22nd day of April, 2002

*Larry L. Austin*  
Larry L. Austin S-1903



● = CORNER LOCATION

**HISTORY OF CORNER ESTABLISHMENT**

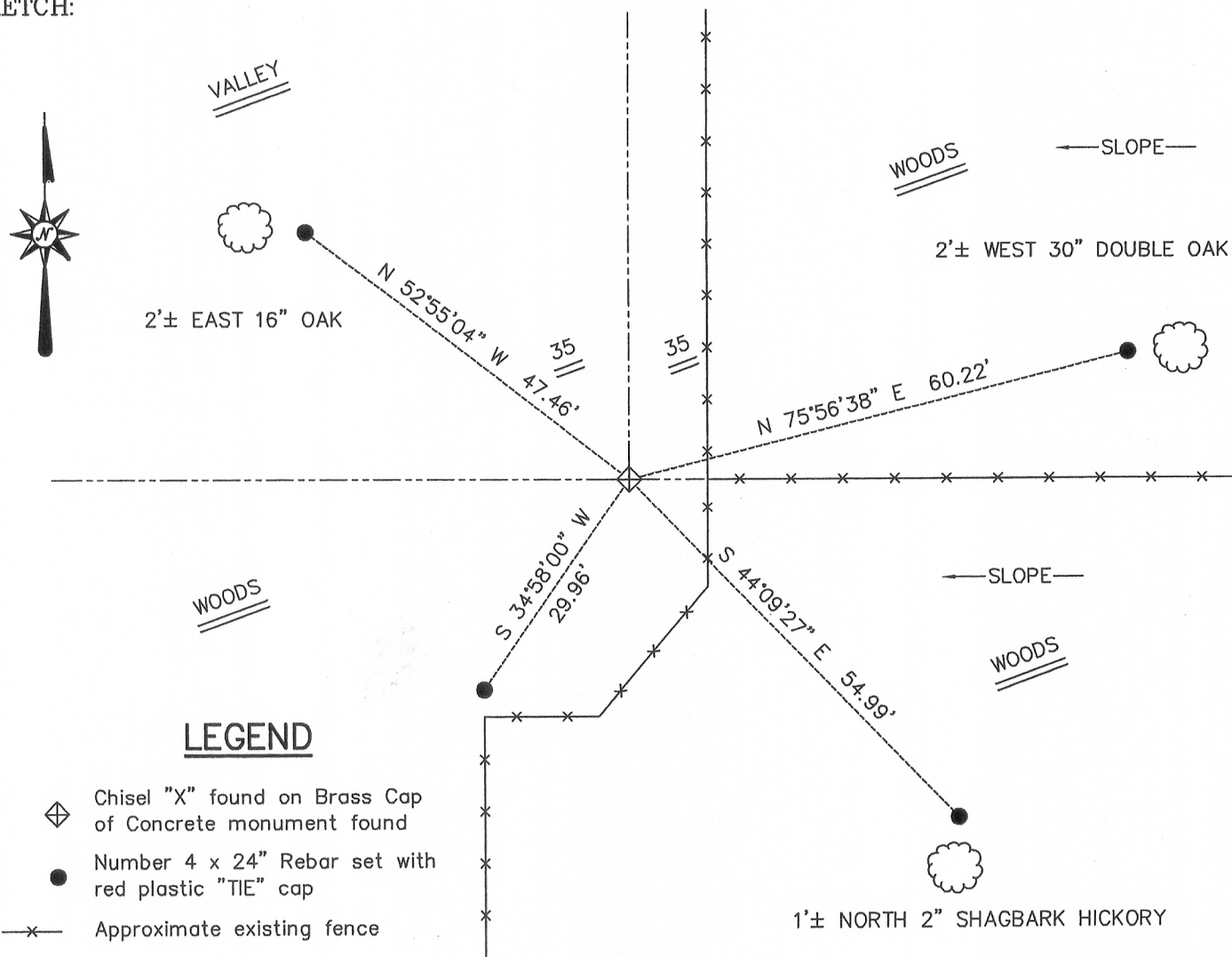
Corner was originally set in 1832 by Lucius Lyon. In 1854 Clark measured to this corner.

**DESCRIPTION OF CORNER EVIDENCE FOUND**

I found and accepted a concrete monument with a brass cap. I verified it's location with E.D.M. methods.

**DESCRIPTION OF CORNER AND WITNESS MONUMENTS**, references and accessories used to perpetuate the original or re-established location of this corner. Witnesses to the corner location B. Sedgwick & S. Blindert & B. Digman

**SKETCH:**



SKETCH NOT TO SCALE

**AUSTIN ENGINEERING, LLC**

4211 HWY 81 EAST, LANCASTER, WI 53813  
PHONE 608-723-6363 FAX 608-723-6702

FIELDBOOK: SDR33, 2207

G:\T5NR6W\34  
C:\SWA\TIE\T5NR6W\124  
CREW: BS-SB-SA-BD

DRAWN BY: SW AUSTIN  
APPROVED: LL AUSTIN

**CORNER NUMBER 124**

**AUG 28 2013**