

U.S. PUBLIC LAND SURVEY MONUMENT RECORD - GRANT COUNTY, WI

Section 36, Town 5 North Range 6 West, Town of Bloomington West

CERTIFICATE:

I, Chris D. Higgins, do hereby certify that the corner location on this record was determined by me and/or under my direct supervision and that this U.S. Public Land Survey Monument Record is correct and complete to the best of my knowledge and belief.

Dated this 31st day of October, 20 12.

Chris D. Higgins
Chris D. Higgins, RLS-2937-8



● = CORNER LOCATION

HISTORY OF CORNER ESTABLISHMENT:

Thomas Buck set the corner February 5, 1998 from existing physical evidence.

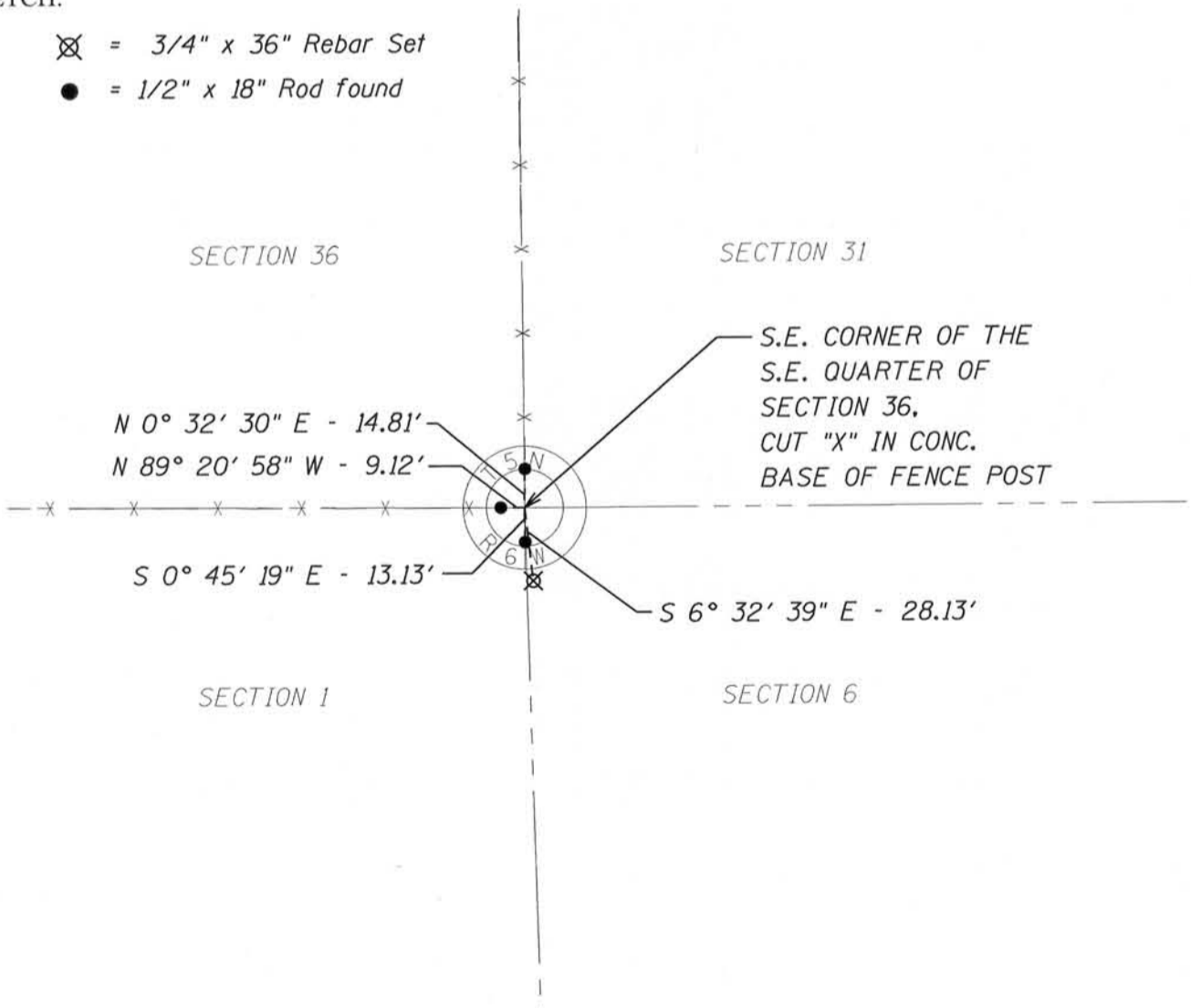
DESCRIPTION OF CORNER EVIDENCE FOUND:

3/4" rod Buck set was not found, but all 1/2" rod reference ties were. I used the ties to set a chisled "x" in the concrete base of a fence post. Buck's location matched occupation and section proration, so I accepted it.

DESCRIPTION OF CORNER AND WITNESS MONUMENTS, references and accessories used to perpetuate the original or re-established location of this corner. Witnesses to corner location Ben Scheffner and Rey Munoz

SKETCH:

- ⊗ = 3/4" x 36" Rebar Set
- = 1/2" x 18" Rod found



NOV 27 2012
121

Survey Monument Record

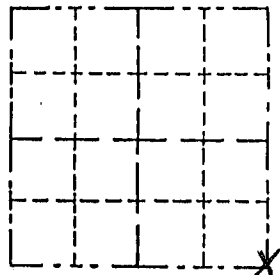
TYPE OF MONUMENT 3/4" x 24" Iron Rod
STATE PLANE COORDINATES: N _____
E _____
ELEVATION — M.S.L. DATUM: _____
THETA ANGLE: _____
FIELD BOOK: _____
PAGE _____

CORNER NO. 121
SECTION 36
TOWN 5N
RANGE 6W

BASIS FOR MONUMENT LOCATION

(Use reverse side if necessary)

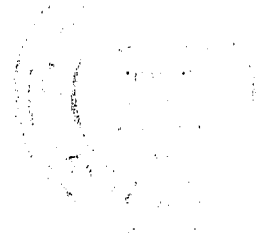
Show info such as: History of corner, with reference to Vol. and pg., dates, surveyor; exact description of monument replaced; if location computed, by taped or EDM traverse; landowner, remarks, etc.



LOCATION
(Indicated by "X")

- FOUND PERPETUATED LOCATION
- OBLITERATED EVIDENCE LOCATION
- LOST CORNER (RESTORED BY PROPORTIONATE METHODS)

Monument set from existing physical evidence after verification by proportionate measurements from an EDM traverse of the area and GPS observations.



CERTIFIED CORRECT TO THE BEST OF MY KNOWLEDGE AND BELIEF

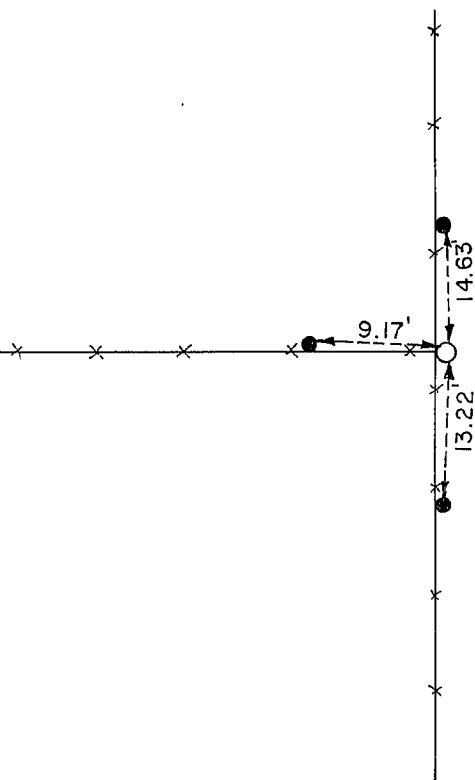
Thomas Buck

Registered Land Surveyor

DATE: 2/5/98

TIE SKETCH

Show at least three (4) ties and monument



- = 3/4" x 24" IRON ROD
- = 1/2" x 18" IRON ROD
- *-* = EXISTING FENCE