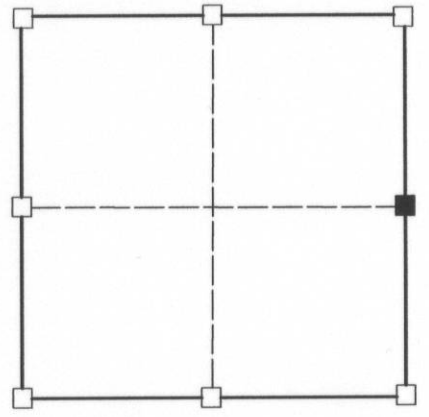


U.S. PUBLIC LAND SURVEY MONUMENT RECORD

(a) Corner Location
 Township 5 North
 Range 6 West
 Town of Bloomington
 Grant County

I, Richard Marks, certify that the corner location on this record was determined by me and that this U.S. public land survey monument record is correct and complete to the best of my knowledge and belief. Dated this 20th day of July, 2009



■ = corner location

Section 36



Richard Marks R.L.S. # S-1473

History of corner establishment:

Original survey was done by Lucius Lyon in April, 1832. On February 5, 1998 Thomas Buck set a 3/4" solid round iron rod from existing physical evidence.

Description of corner evidence found:

I found the 3/4" solid round iron rod set by Thomas Buck and left it in place.

Description of corner and witness monuments, references and accessories used to perpetuate the original or re-established location of this corner.

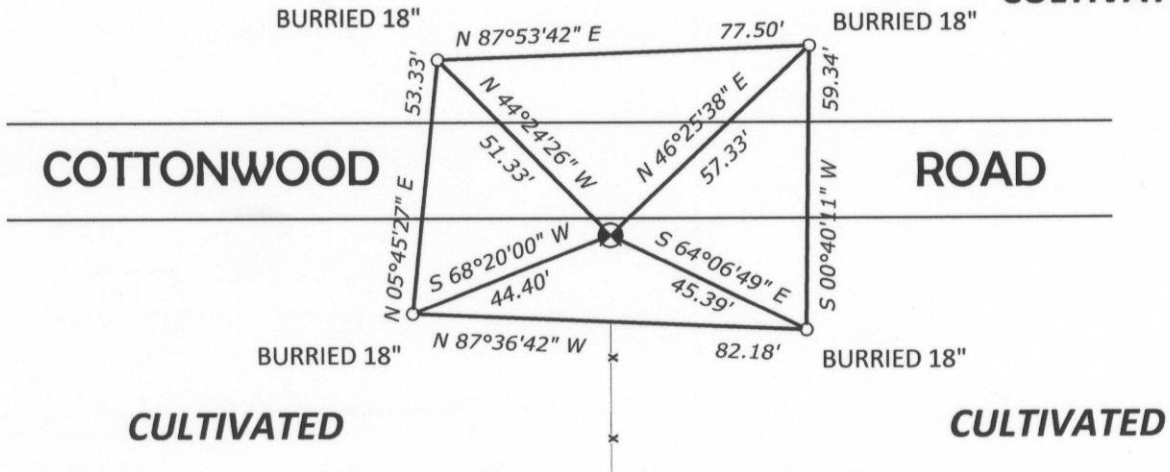
Bearings are grid based on the Grant County coordinate system designed by the Wisconsin Department of Transportation. NAD83 (2007)

Witness corners are 3/4" x 24" solid round iron rods set.



CULTIVATED

CULTIVATED



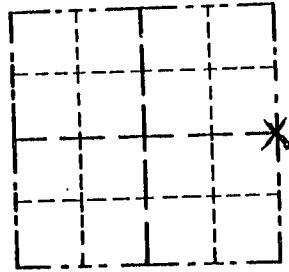
Control: COMBINATION OF GPS AND CONVENTIONAL FIELD CONTROL

Datum: NAD 83 (2007)		County coordinates		State plane coordinates		Page _____
Lat.	42°51'55.339367"	North	530060.68'	North	317078.99'	
Long.	91°01'15.888184"	East	735725.11'	East	1694756.08'	

Survey Monument Record

CORNER NO. 120
SECTION 36
TOWN 5N
RANGE 6W

TYPE OF MONUMENT 3/4" x 24" Iron Rod
STATE PLANE COORDINATES: N _____
E _____
ELEVATION — M.S.L. DATUM: _____
THETA ANGLE: _____
FIELD BOOK: _____
PAGE _____



LOCATION
(Indicated by "X")

BASIS FOR MONUMENT LOCATION

(Use reverse side if necessary)

Show info such as: History of corner, with reference to Vol. and pg., dates, surveyor; exact description of monument replaced; if location computed, by taped or EDM traverse; landowner, remarks, etc.

SEAL:

Monument set from existing physical evidence after verification by proportionate measurements from an EDM traverse of the area and GPS observations.

CERTIFIED CORRECT

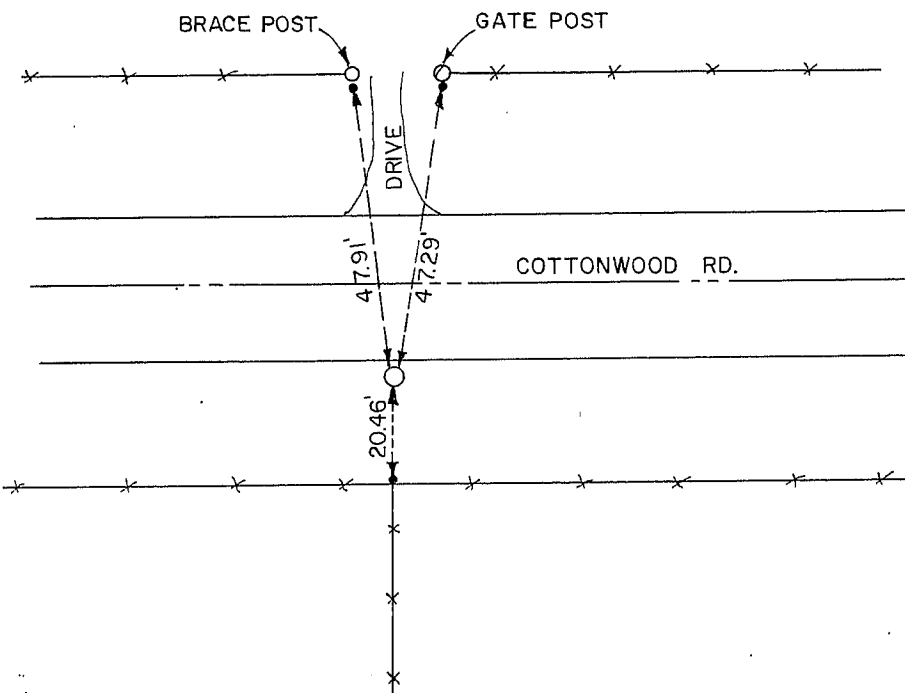
Thomas Buck

Registered Land Surveyor

DATE: 2-15-98

TIE SKETCH

Show at least three (3) ties and monument



- = 1/2" x 18" IRON ROD
- = 3/4" x 24" IRON ROD
- *-*- = EXISTING FENCE