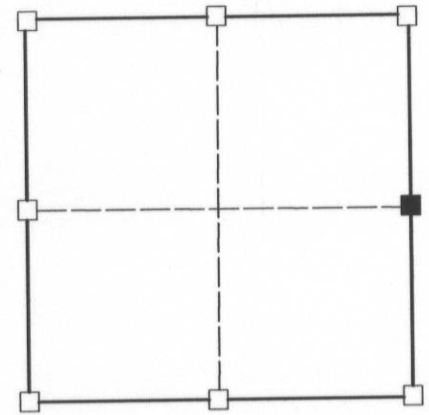


U.S. PUBLIC LAND SURVEY MONUMENT RECORD

(a) Corner Location
 Township 5 North
 Range 6 West
 Town of Bloomington
 Grant County

I, Richard Marks, certify that the corner location on this record was determined by me and that this U.S. public land survey monument record is correct and complete to the best of my knowledge and belief.
 Dated this 20th day of July, 2009



■ = corner location

Section 35



Richard Marks R.L.S. # S-1473

History of corner establishment:

Original survey was done by Sibley in June, 1832. On February 5, 1998 Thomas Buck set a 3/4" iron rod from existing physical evidence.

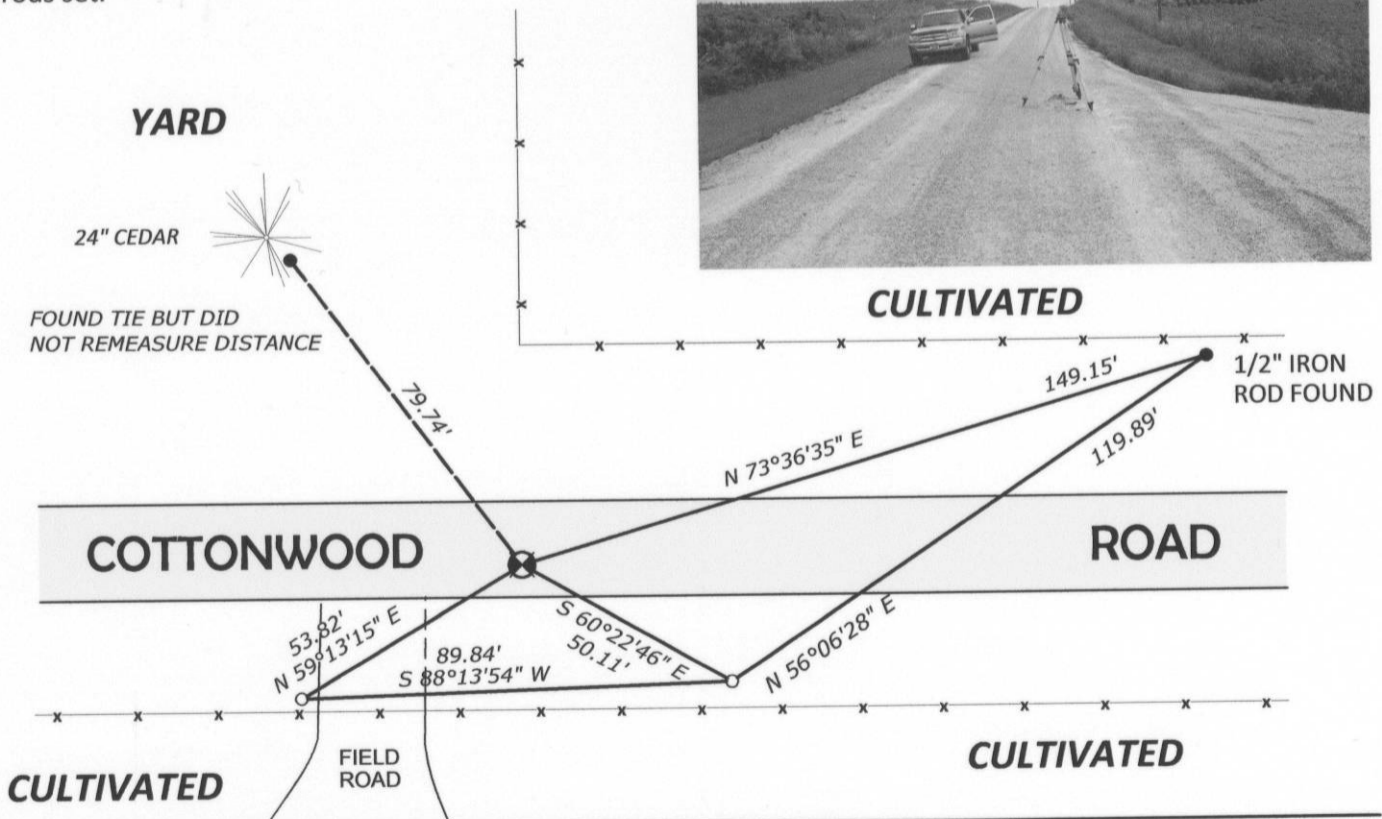
Description of corner evidence found:

I found the 3/4" iron rod set by Thomas Buck and left it in place.

Description of corner and witness monuments, references and accessories used to perpetuate the original or re-established location of this corner.

Bearings are grid based on the Grant County coordinate system designed by the Wisconsin Department of Transportation. NAD83 (2007)

Witness corners are 3/4" x 24" solid round iron rods set.



Control: COMBINATION OF GPS AND CONVENTIONAL FIELD CONTROL

Datum: NAD 83 (2007)

County coordinates

State plane coordinates

Lat. 42°51'54"819220"

North

530022.61'

North

317092.11'

Long. 91°02'27.321373"

East

730404.87'

East

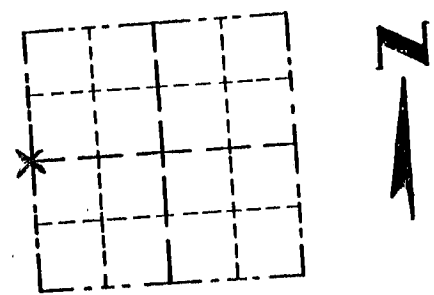
1689436.05'

Page

Survey Monument Record

CORNER NO. _____
 SECTION 36
 TOWN 5N
 RANGE 6W

TYPE OF MONUMENT 3/4" Iron Rod
 STATE PLANE COORDINATES: N _____
 E _____
 ELEVATION — M.S.L. DATUM: _____
 THETA ANGLE: _____
 FIELD BOOK: _____
 PAGE _____



LOCATION
(Indicated by "X")

BASIS FOR MONUMENT LOCATION

(Use reverse side if necessary)
 Show info such as: History of corner, with reference to Vol. and pg., dates, surveyor; exact description of monument replaced; if location computed, by taped or EDM traverse; landowner, remarks, etc.

SEAL:

Monument set from existing physical evidence after verification by proportionate measurements from an EDM traverse of the area and GPS observations.

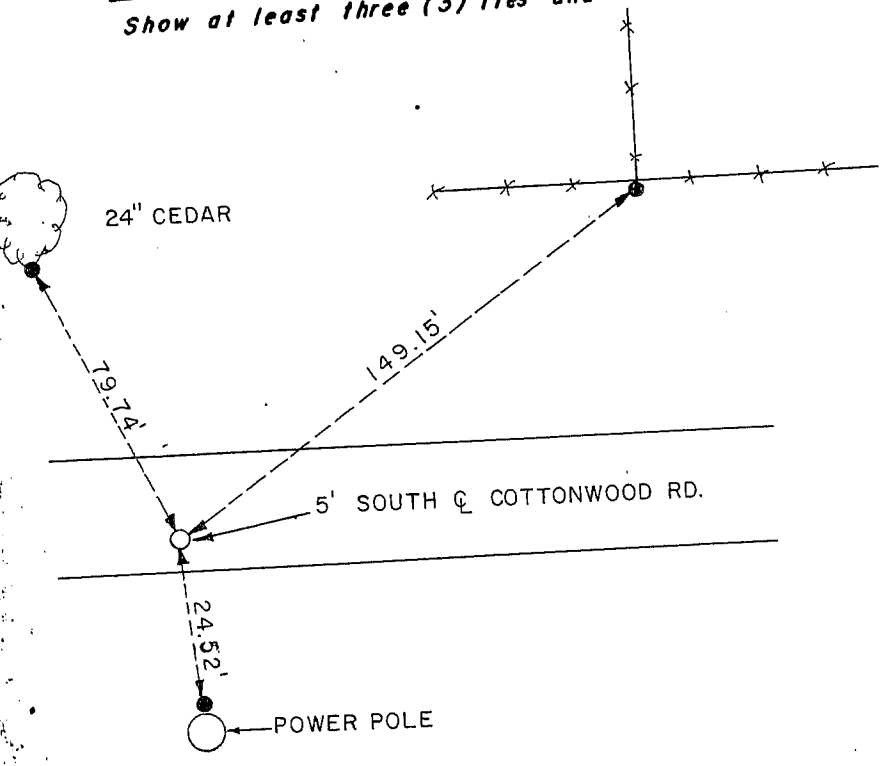
CERTIFIED CORRECT

Thomas Buell
 Registered Land Surveyor

DATE: 2/5/98

TIE SKETCH

Show at least three (3) ties and monument



- = 3/4" X 24" IRON ROD
- = 1/2" X 18" IRON ROD
- *-* = EXISTING FENCE