

# U.S. PUBLIC LAND SURVEY MONUMENT RECORD

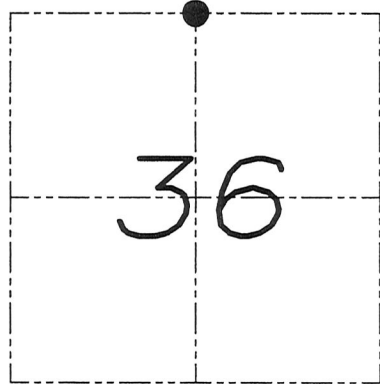
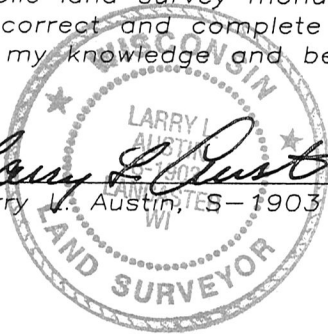
Section 36, Town 5 North Range 6 West, Town of Bloomington, Grant County, Wisconsin

## CERTIFICATE

I, Larry L. Austin, do hereby certify that the corner location on this record was determined by me and/or under my direct supervision and that this U.S. public land survey monument record is correct and complete to the best of my knowledge and belief.

*Larry L. Austin*  
 Larry L. Austin, S-1903

11.10.08  
 date



● = CORNER LOCATION

## HISTORY OF CORNER

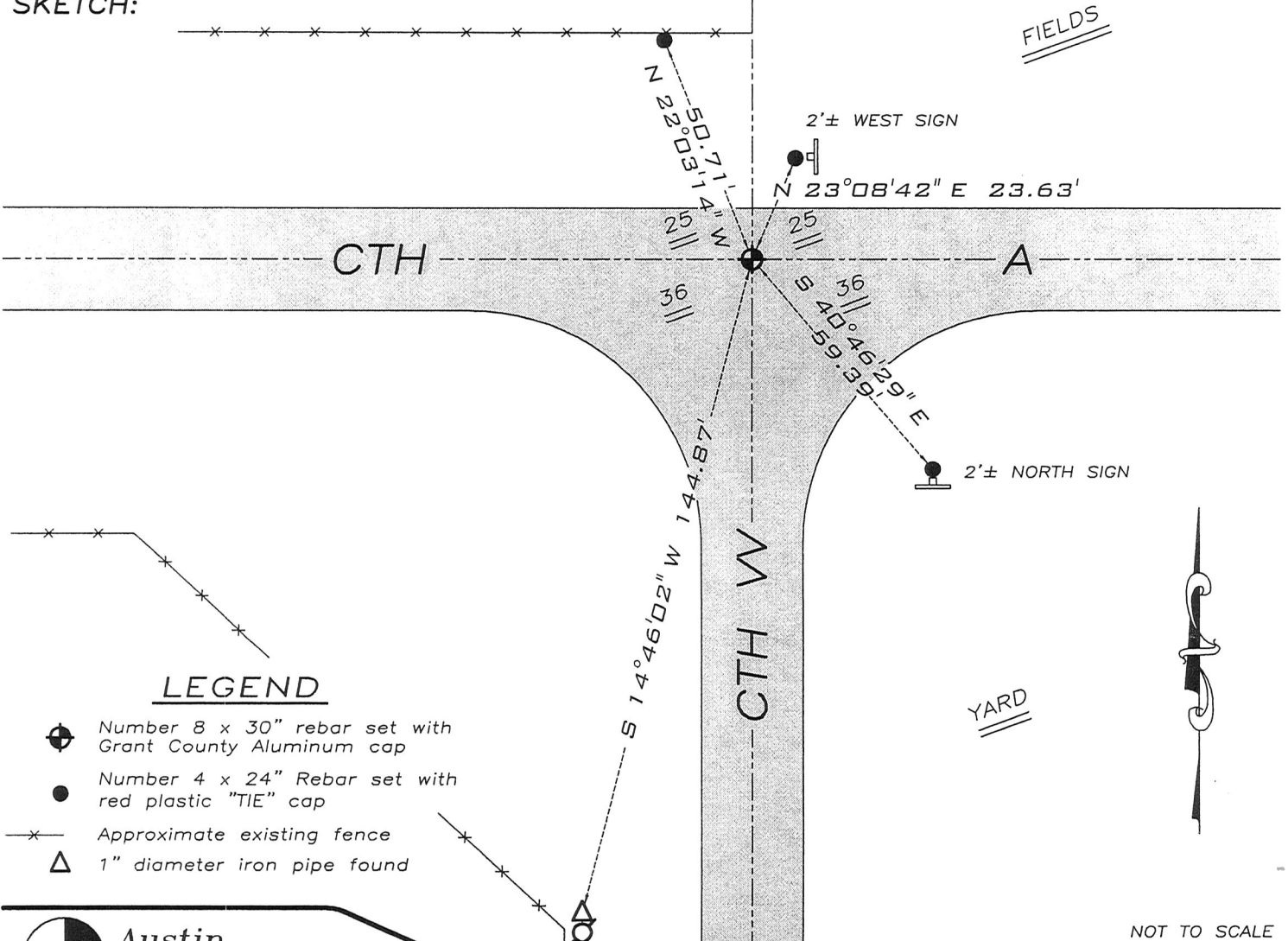
Corner was originally set in 1832 by Clark. In 1998 Buck set a railroad spike at this location. No other record of the corner was found.

## CORNER EVIDENCE FOUND

The monument and all ties were unable to be located. I reset the corner based on measurements to the adjoining corners. Verified this location using EDM & GPS methods.

DESCRIPTION OF CORNER AND WITNESS MONUMENTS, references and accessories used to perpetuate the original or re-established location of this corner. Witnesses to monument location Bobby Sedgwick & Brad Digman & Shane Austin

## SKETCH:



### LEGEND

- ⊕ Number 8 x 30" rebar set with Grant County Aluminum cap
- Number 4 x 24" Rebar set with red plastic "TIE" cap
- x- Approximate existing fence
- △ 1" diameter iron pipe found

**Austin Engineering LLC**  
 4211 HWY 81 E, LANCASTER, WI 53813  
 PHONE 608-723-6363 FAX 608-723-6702

JOB NUMBER 08S173-ADRIAN  
 FIELDBOOK: TDSR, 2708  
 G:\T4NR6W\01  
 H:\TIE\T5NR6W\102

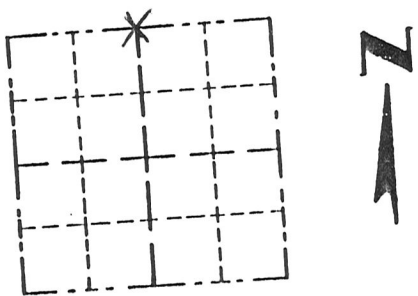
DRAWN BY: SW AUSTIN  
 APPROVED: LL AUSTIN

NOT TO SCALE

# Monument Record

CORNER NO. \_\_\_\_\_  
 SECTION 36  
 TOWN 5N  
 RANGE 6W

OF MONUMENT RAIL ROAD SPIKE  
 NATE PLANE COORDINATES: N \_\_\_\_\_  
 E \_\_\_\_\_  
 ELEVATION — M.S.L. DATUM: \_\_\_\_\_  
 THETA ANGLE: \_\_\_\_\_  
 FIELD BOOK: \_\_\_\_\_  
 PAGE \_\_\_\_\_



LOCATION  
(Indicated by "X")

## BASIS FOR MONUMENT LOCATION

(Use reverse side if necessary)  
 Show info such as: History of corner, with reference to Vol. and pg., dates, surveyor; exact description of monument replaced; if location computed, by taped or EDM traverse; landowner, remarks, etc.

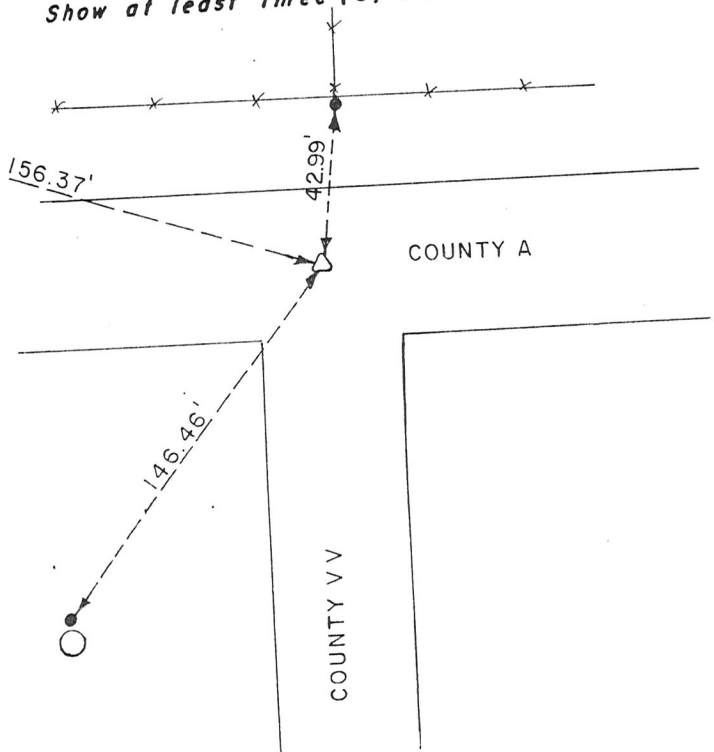
SEAL:

Monument set from existing physical evidence after verification by proportionate measurements from an EDM traverse of the area and GPS observations.

CERTIFIED CORRECT  
Thomas Bucke  
 Registered Land Surveyor  
 DATE: 2/15/98

## TIE SKETCH

Show at least three (3) ties and monument



- △ = RAIL ROAD SPIKE
- = 1/2" X 18" IRON ROD
- = POWER POLE
- \*-\* = EXISTING FENCE