

U.S. PUBLIC LAND SURVEY MONUMENT RECORD

Section 25, Town 5 North Range 6 West, Town of Bloomington, Grant County, Wisconsin

CERTIFICATE

I, Larry L. Austin, do hereby certify that the corner location on this record was determined by me and/or under my direct supervision and that this U.S. public land survey monument record is correct and complete to the best of my knowledge and belief.

Larry L. Austin
 Larry L. Austin, S-1903



● = CORNER LOCATION

HISTORY OF CORNER

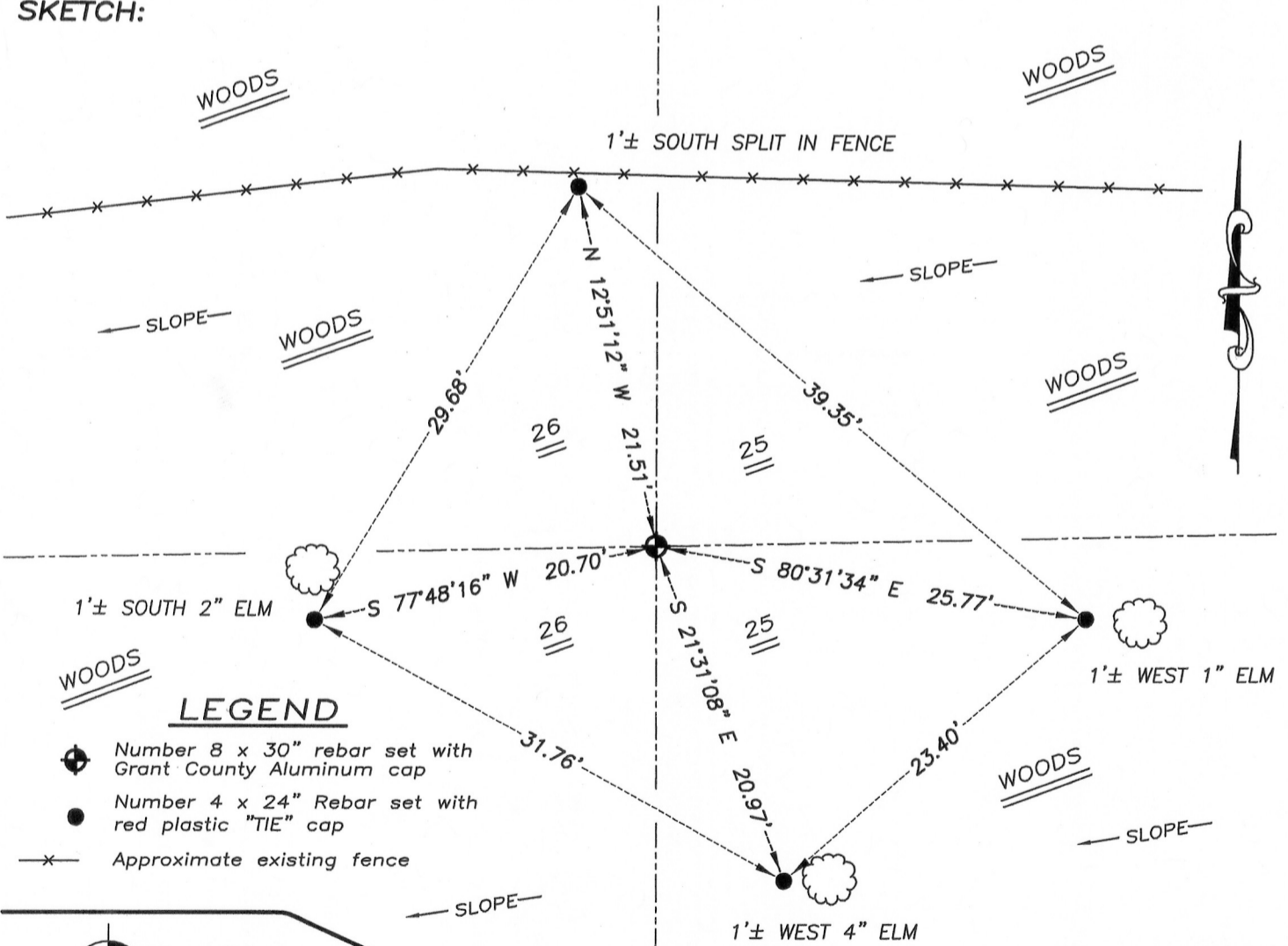
Corner was originally set in 1832 by Clark. Everett found the original corner in 1852 for a survey filed in Book "B", Page 309. Another survey was found in Book "B", Page 380, dated 1855 which also tied to this corner. No other record of the corner was found.

CORNER EVIDENCE FOUND

No evidence for this corner was found. I reset the corner equidistant and online between the Northwest corner and Southwest corner of Section 25. I verified this location by E.D.M. and G.P.S. methods.

DESCRIPTION OF CORNER AND WITNESS MONUMENTS, references and accessories used to perpetuate the original or re-established location of this corner. Witnesses to monument location Bobby Sedgwick & Ben Stanfly & Shane Austin

SKETCH:



LEGEND

- Number 8 x 30" rebar set with Grant County Aluminum cap
- Number 4 x 24" Rebar set with red plastic "TIE" cap
- x— Approximate existing fence

NOT TO SCALE

Austin Engineering LLC
 austinengineeringllc.com
 4211 HWY 81 E, LANCASTER, WI 53813
 PHONE: 608-723-6363 FAX: 608-723-6702

JOB NUMBER 09S192-RICHTER
 FIELDBOOK: TDSR, 2910
 G:\T4NR6W\01
 H:\TIE\T5NR6W\99

DRAWN BY: SW AUSTIN
 APPROVED: LL AUSTIN

99

APR 19 2012