

JUN 17 1993

# GOVERNMENT CORNER RECORD

SE CORNER, SECTION 21, TOWNSHIP 5 NORTH, RANGE 6 ~~EAST~~ - WEST,

TOWN, ~~CITY OR VILLAGE OF~~ BLOOMINGTON

TYPE OF MONUMENT: GRANT CO. ALUM. MONU FND. ELEVATION - M.S.L. DATUM \_\_\_\_\_

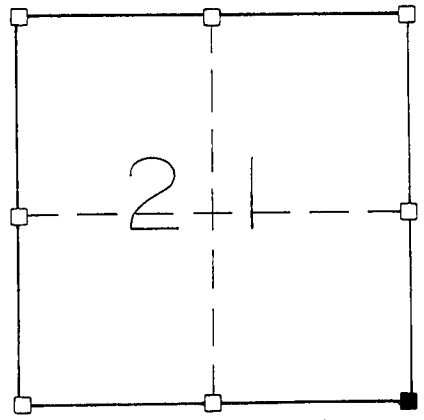
WITNESSES TO CORNER LOCATION

SEAN M. WALSH

JASON D. DOBBS

SECTION 21, T. 5 N, R. 6 ~~EW~~

TOWN OF BLOOMINGTON

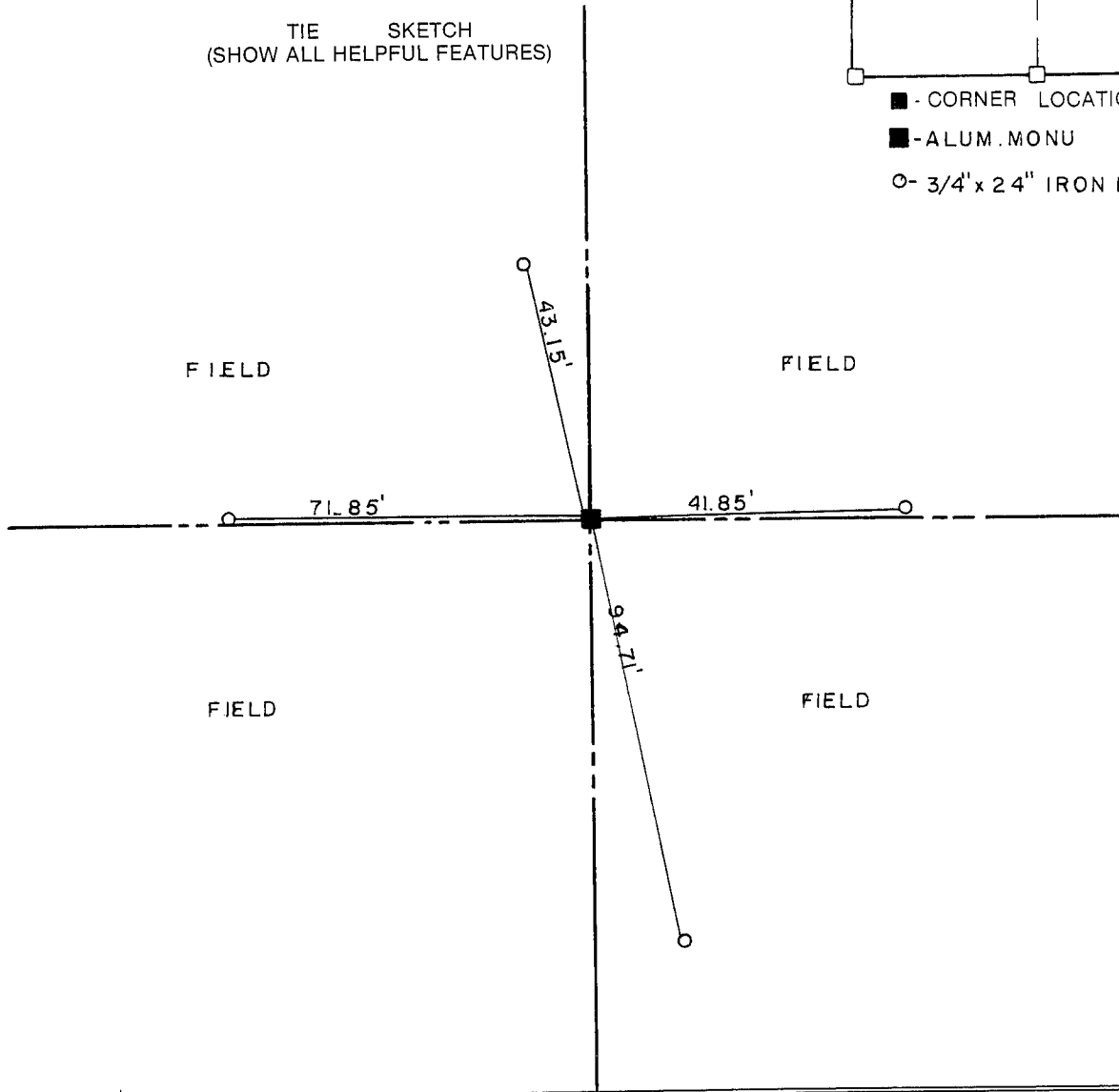


■ - CORNER LOCATION

■ - ALUM. MONU

○ - 3/4" x 24" IRON ROD SET

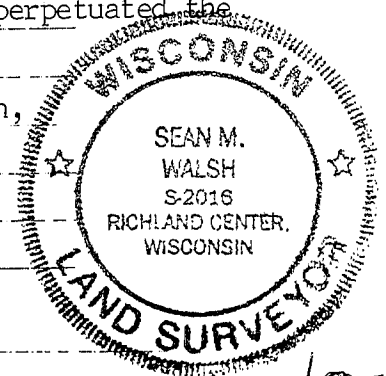
TIE SKETCH  
(SHOW ALL HELPFUL FEATURES)



SURVEYOR'S CERTIFICATE

SEAL S. 2016

I, Sean M. Walsh DO HEREBY CERTIFY THAT I have accepted and perpetuated the  
above corner in accordance with the information contained hereon and  
that this information is correct and true to the best of my information,  
knowledge and belief. I accepted this location as the best available  
evidence and perpetuated as shown above.



DATED THIS 11 DAY OF JUNE, 19 93

*Sean M. Walsh*  
REGISTERED LAND SURVEYOR

C/87