

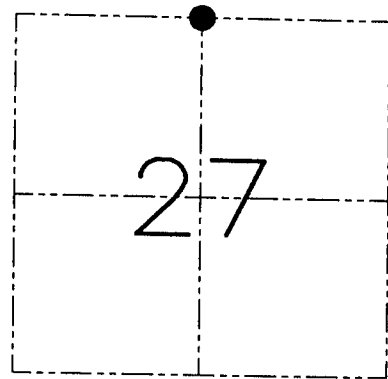
U.S. PUBLIC LAND SURVEY MONUMENT RECORD – GRANT COUNTY, WI
 Section 27, Town 5 North Range 6 West, Town of Bloomington

CERTIFICATE

I, Larry L. Austin, do hereby certify that the corner location on this record was determined by me and/or under my direct supervision and that this U.S. public land survey monument record is correct and complete to the best of my knowledge and belief.

Dated this 25th day of October, 2008

Larry L. Austin
 Larry L. Austin S-1903



● = CORNER LOCATION

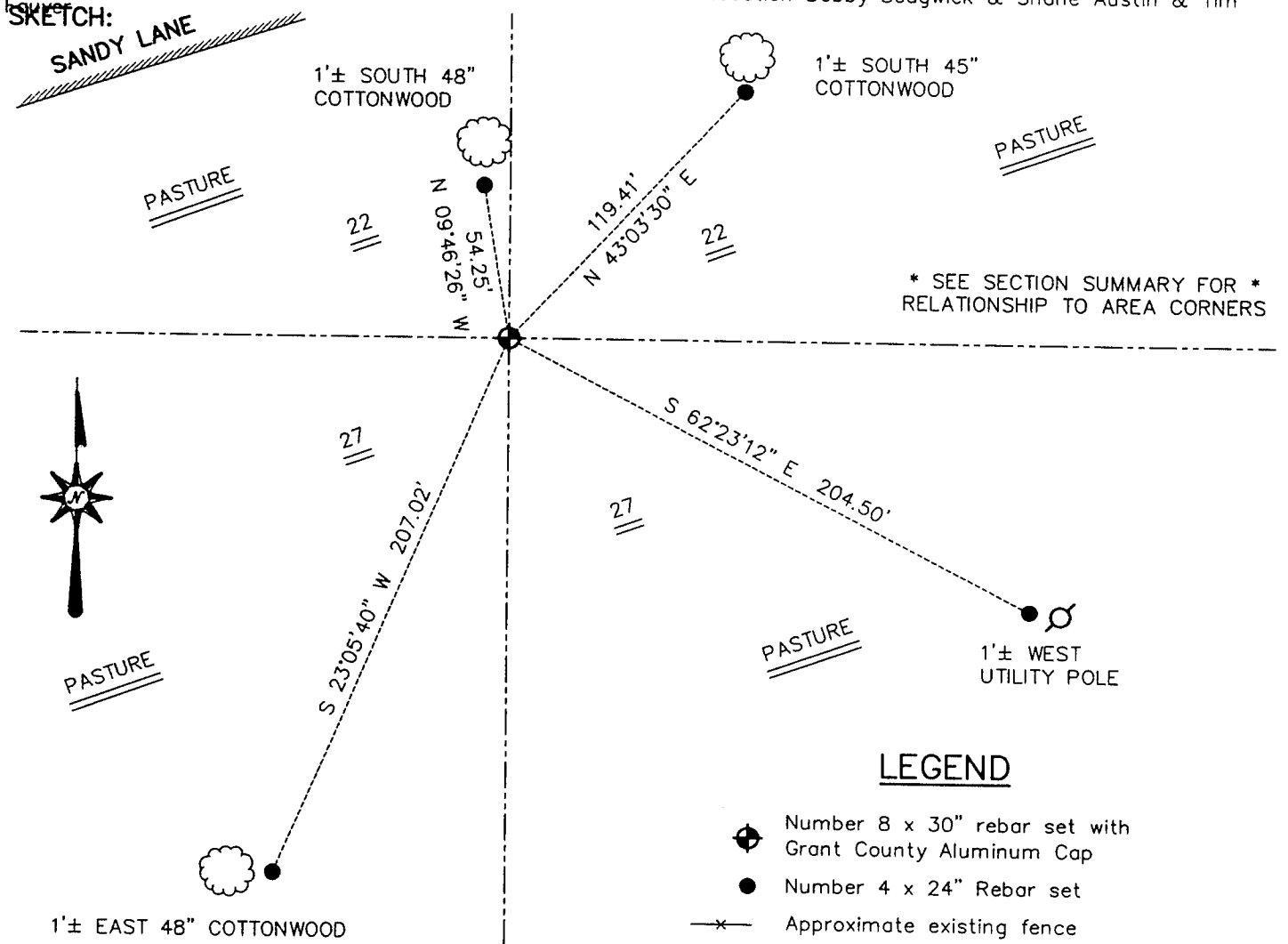
HISTORY OF CORNER ESTABLISHMENT

Corner was originally set in 1832 by Robert Clark. In 1852 Overton tied to the original corner. In 1868 Hayden also tied to the original corner. In 1983 Brashaw set a 1" by 30" Aluminum monument.

DESCRIPTION OF CORNER EVIDENCE FOUND

I was unable to locate the 1" Aluminum monument. I retraced it's location based on the survey done by Brashaw. I verified this location using E.D.M. & G.P.S. methods.

DESCRIPTION OF CORNER AND WITNESS MONUMENTS, references and accessories used to perpetuate the original or re-established location of this corner. Witnesses to the corner location Bobby Sedgwick & Shane Austin & Tim



SKETCH NOT TO SCALE

AUSTIN ENGINEERING, LLC
 4211 HWY 81 EAST, LANCASTER, WI 53813
 PHONE 608-723-6363 FAX 608-723-6702

FIELDBOOK: SDR33, 2106, 2107, 2041
 G: \T5NR6W\34
 C: \SWA\TIE\T5NR6W\86
 CREW: BS-SB-SA-TF

DRAWN BY: SW AUSTIN
 APPROVED: LL AUSTIN

CORNER NUMBER 86