

56078

U.S. PUBLIC LAND SURVEY MONUMENT RECORD - GRANT COUNTY, WI

Section 22, Town 5 North Range 6 West, Town of Bloomington (a)

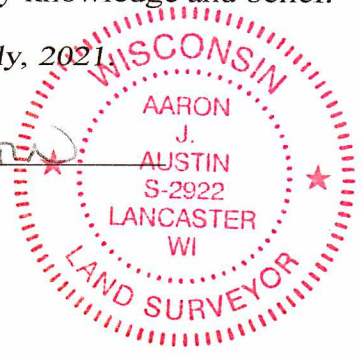
NOTE: This form is intended and designed to fulfill all requirements of the Wisconsin Administrative Code Chapter A-E 7.08, U.S. Public Land Survey Monument Record (3) (a) (b) (c) (d) (e) (f) (g) (h) (i).

CERTIFICATE: (i)

I, Aaron J. Austin, Wisconsin Professional Land Surveyor, do hereby certify that the corner location on this record was determined by me and/or under my direct supervision and that this U.S. Public Land Survey Monument Record is correct and complete to the best of my knowledge and belief.

Dated this 20th day of July, 2021.

Aaron J. Austin
Aaron J. Austin, S-2922



⊕ = CORNER LOCATION

Grant County Coordinates:
NAD 83 (2011)
Northing: 540,466.42
Easting: 725,041.20

HISTORY OF CORNER ESTABLISHMENT:

Original corner was set in 1832 by Robert Clark.
J.C. Scott located the corner on a Survey in Book D, Page 133 dated 4/22/1883.

DESCRIPTION OF CORNER EVIDENCE FOUND: (b) (f) (g) (h)

Original Bearing trees were gone as mentioned on the J.C. Scott Survey. Scott established the location by running from the Northeast and the Southeast Corners of the Section. He did not establish a new monument or Bearing Trees. I reset the Corner Midway and Online between the Northeast and the Southeast corners. I set four witness corners after I verified the Monument's location with G.P.S. and E.D.M. methods.

DESCRIPTION OF CORNER AND WITNESS MONUMENTS, references and accessories used to perpetuate the original or re-established location of this corner. (c) (d) (e)

Witnesses to corner location Shane Austin.
Drawn by Owen Austin

SKETCH: LEGEND

- ⊕ Section Corner—as designated
- 5/8" x 18" rebar set
- x-x-x- Existing fence

