

**U.S. PUBLIC LAND SURVEY MONUMENT RECORD - GRANT COUNTY, WI**

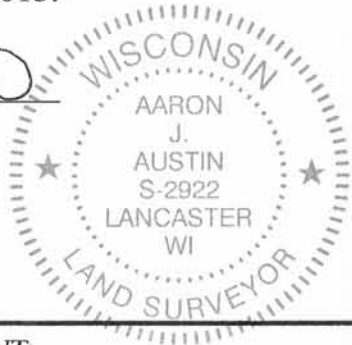
Section 17, Town 5 North Range 6 West, Town of Wyalusing

**CERTIFICATE:**

I, Aaron J. Austin, do hereby certify that the corner location on this record was determined by me and/or under my direct supervision and that this U.S. Public Land Survey Monument Record is correct and complete to the best of my knowledge and belief.

Dated this 19th day of January, 2015.

*Aaron J. Austin*  
 Aaron J. Austin, S-2922



HISTORY OF CORNER ESTABLISHMENT:

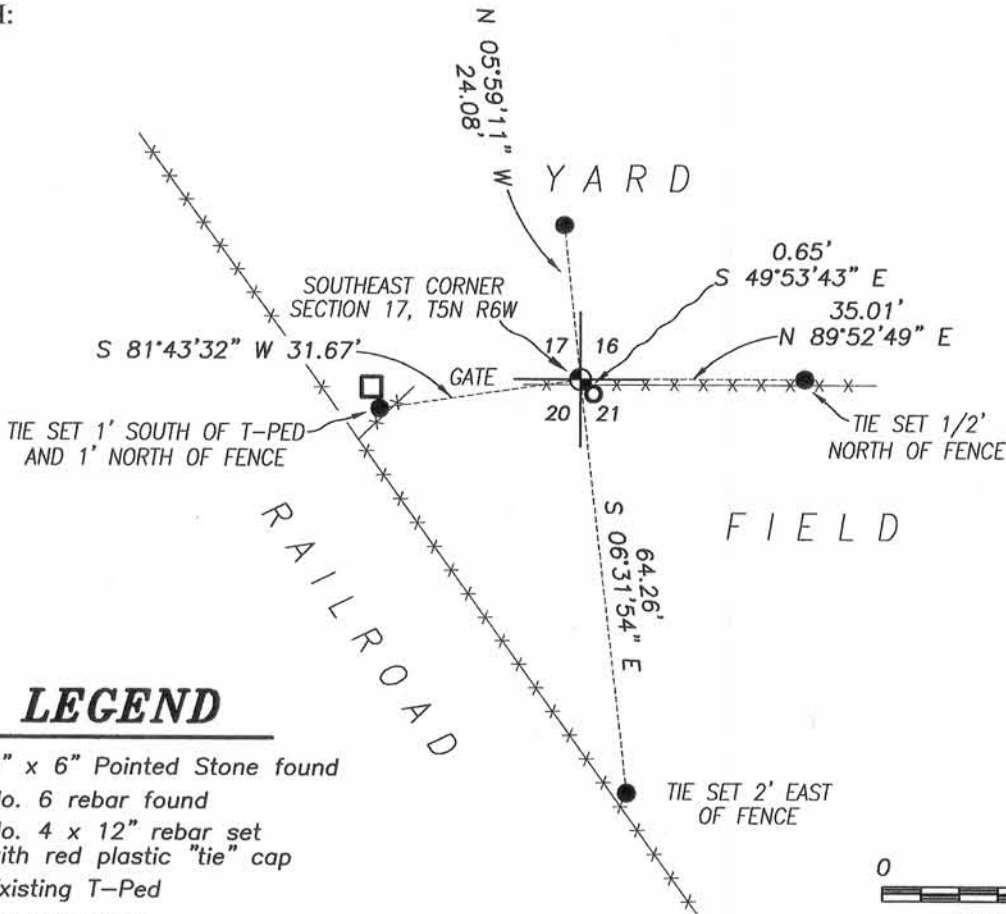
- 1832-Robert Clark set original corner.
- 1833-J.C. Scott tied to the original corner on a survey in Book D, Page 149.
- 1973-H. Ralph Jr. tied to a Stone Monument marking the corner on a survey in Book F, Page 290.
- 1984-K. Graham prepared a U.S. Public Land Survey Monument Record for this corner. Several more recent surveys have accepted this Stone as the corner.

DESCRIPTION OF CORNER EVIDENCE FOUND:

I found a 6" x 6" pointed Stone 24" below the surface of the ground with a #6 rebar next to the Stone. No ties were found as established by Keith Graham. I set 4 new ties and verified this location by G.P.S. methods.

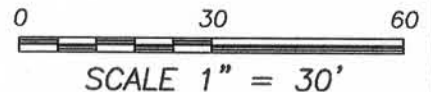
DESCRIPTION OF CORNER AND WITNESS MONUMENTS, references and accessories used to perpetuate the original or re-established location of this corner. Witnesses to corner location Shane Austin.

SKETCH:



**LEGEND**

- 6" x 6" Pointed Stone found
- No. 6 rebar found
- No. 4 x 12" rebar set with red plastic "tie" cap
- Existing T-Ped
- x-x- Existing fence



4211 HWY 81 E, LANCASTER, WI 53813  
 PHONE: 608-723-6363 FAX: 608-723-6702

JOB NO: 14S206  
 H:CRD\14s206-WOOD  
 H:\TIE\T5NR6W\69

FIELDBOOK: TDSR  
 DRAWN BY: AJ AUSTIN  
 CREW: SW AUSTIN

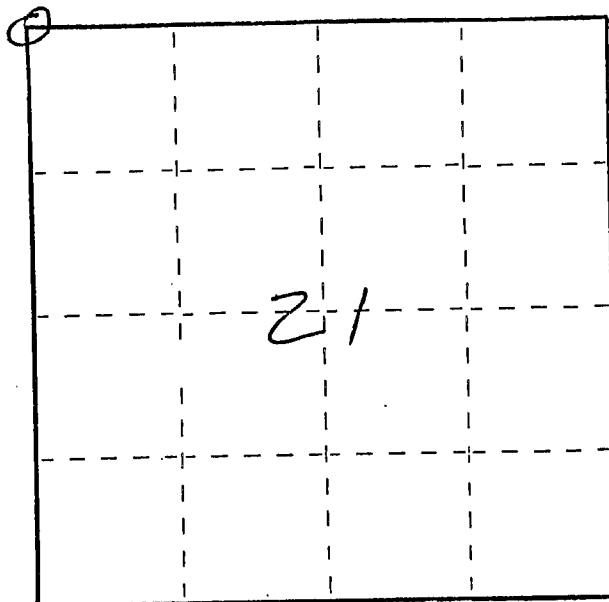
# U. S. PUBLIC LAND SURVEY MONUMENT RECORD

INSTRUCTIONS: This record shall show the location of the corner and shall include all of the following nine elements (a through i).

- (a) Identify the corner by reference to the U.S. public land survey system.
- = Corner monument restored.

NE COR., SEC. 21,  
 T. 5 N., R. 6 W.,  
 4<sup>th</sup> P.M.,  
 GRANT CO., WISC.

FIG. 6 1925

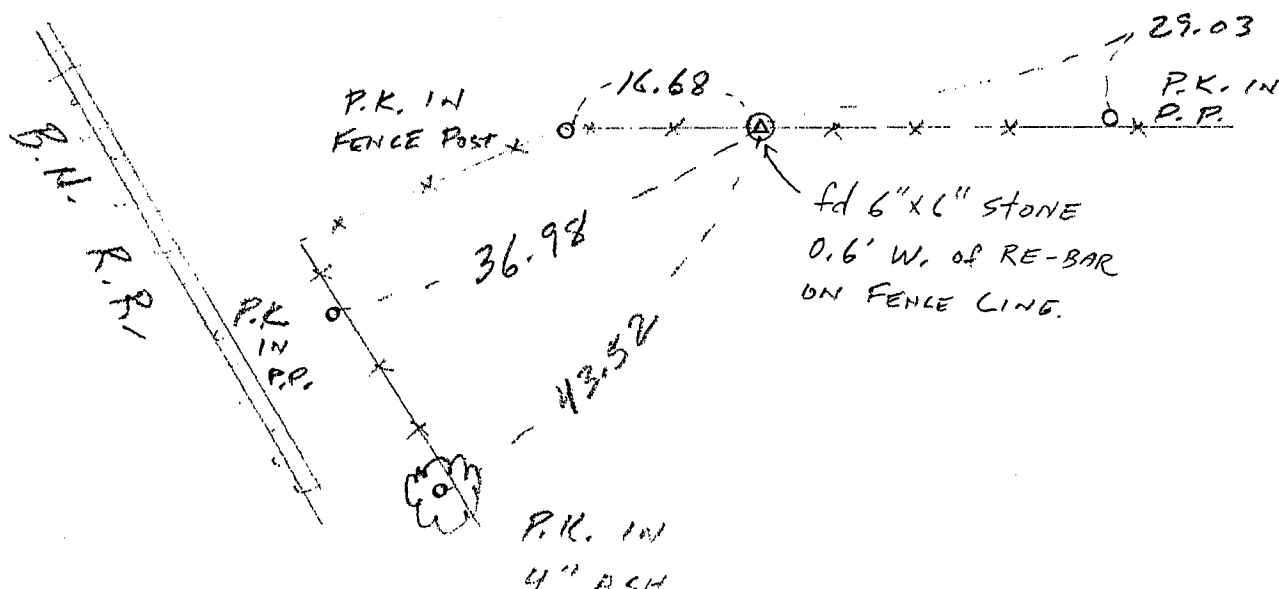


- (b) Describe any record evidence, monument evidence, occupational evidence, testimonial evidence or any other material evidence you considered, and whether the monument was found or placed.

FOUND STONE MONUMENT LOCATED AND ACCEPTED  
 BY HOMER RALPH PER TESTIMONY OF ADJOINING  
 OWNER.

- (c) In the plan view drawing below, provide reference ties to at least 4 witness monuments, or, if the location is within a municipality, to at least 2 witness monuments. (Witness monuments shall be made of concrete, natural stone, iron or other equally durable material.) Describe witness monuments.

- (d) Show a plan view drawing depicting the relevant monuments and reference ties which is sufficient in detail to enable accurate relocation of the corner monument if the corner monument is disturbed. Indicate north.



(e) Describe any material discrepancy between the location of the corner as restored or reestablished and the location of that corner as previously restored or reestablished by distance and direction. Show the discrepancy on the plan view drawing under (d), above. Show the distances between the corner as previously restored or reestablished and (1) the corner as restored or reestablished, and (2) to at least 2 of the witness monuments shown on the drawing in (d), above.

*NONE.*

(f) Was the corner restored through acceptance of (1) an obliterated evidence location, or, (2) a found perpetuated location?

(g&h) Was the corner reestablished through lost corner proportionate methods? If so, show the method, including the directions and distances to other public land survey corners used as evidence or used for proportioning in determining the corner location?

*No.*

(i) I, KEITH M. GRAHAM  
(type or print name) certify that the corner location shown on this record was determined by me or under my direction and control and that this U.S. Public Land Survey Monument Record is correct and complete to the best of my knowledge and belief.

*Keith M. Graham*  
Signature

11/5/84  
Date

