

56068

U.S. PUBLIC LAND SURVEY MONUMENT RECORD - GRANT COUNTY, WI

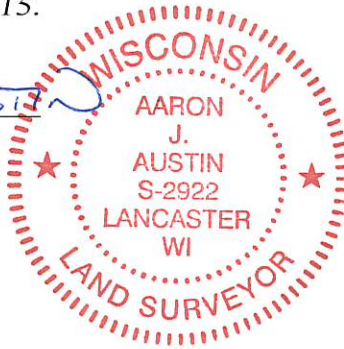
Section 17, Town 5 North Range 6 West, Town of Wyalusing

CERTIFICATE:

I, Aaron J. Austin, do hereby certify that the corner location on this record was determined by me and/or under my direct supervision and that this U.S. Public Land Survey Monument Record is correct and complete to the best of my knowledge and belief.

Dated this 19th day of January, 2015.

Aaron J. Austin
Aaron J. Austin, S-2922



● = CORNER LOCATION

HISTORY OF CORNER ESTABLISHMENT:

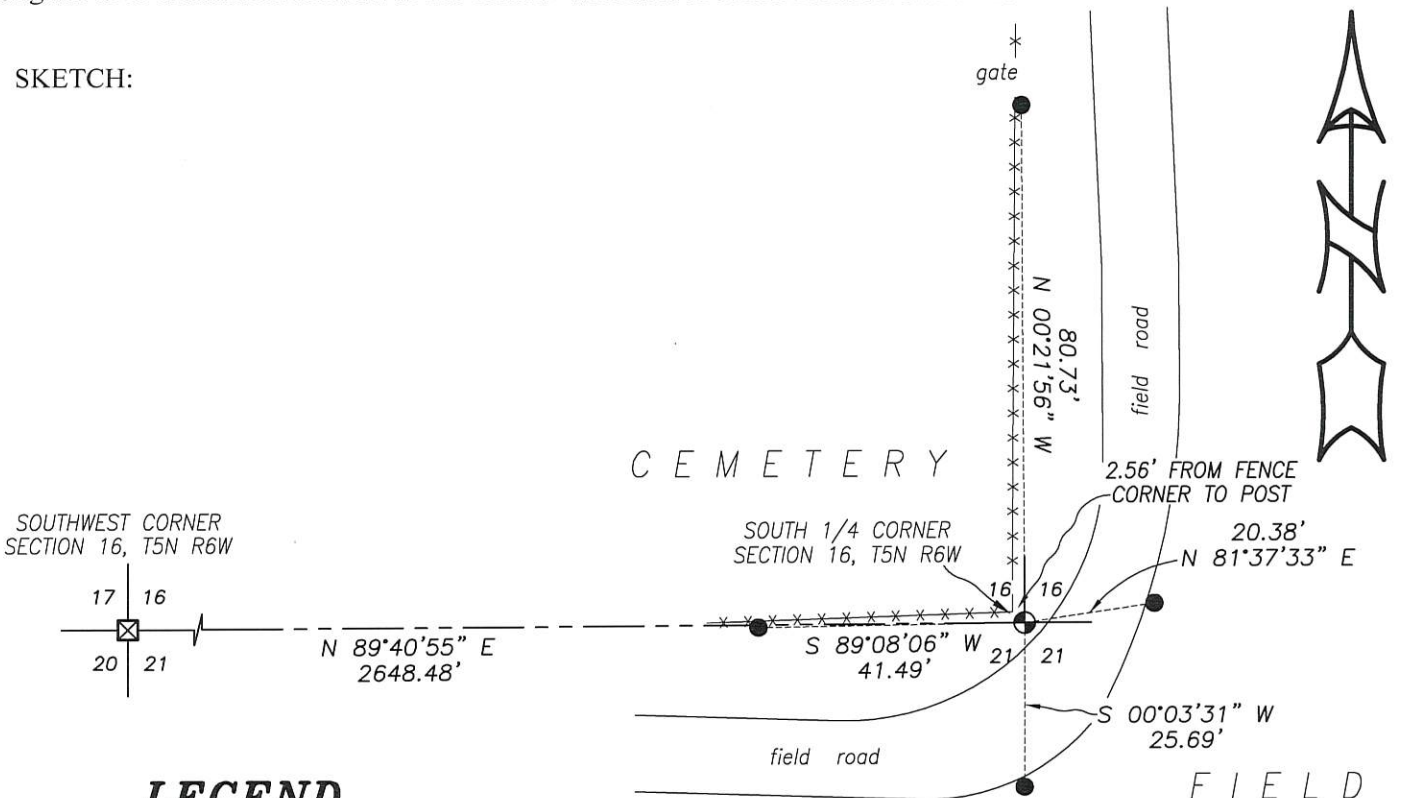
1832-Robert Clark set original corner.
1883-J.C. Scott tied to the corner on surveys in Book D, Page 148 and 149.
Several more recent surveys have accepted a Stone as the corner.

DESCRIPTION OF CORNER EVIDENCE FOUND:

I found a 9" x 12" pointed Stone with ribbon 24" below the surface of the ground.
I set 4 ties and verified this location by E.D.M. and G.P.S. methods.

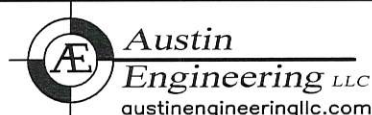
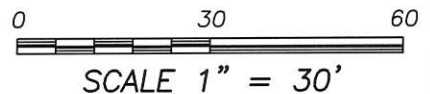
DESCRIPTION OF CORNER AND WITNESS MONUMENTS, references and accessories used to perpetuate the original or re-established location of this corner. Witnesses to corner location Shane Austin.

SKETCH:



LEGEND

- ⊕ 9" x 12" Pointed Stone found
- ⊠ 12" x 12" Pointed Stone found
- No. 4 x 12" rebar set with red plastic "tie" cap
- x-x- Existing fence



4211 HWY 81 E, LANCASTER, WI 53813
PHONE: 608-723-6363 FAX: 608-723-6702

JOB NO: 14S206
H:CRD\14s206-WOOD
H:\TIE\T5NR6W\68

FIELDBOOK: TDSR
DRAWN BY: AJ AUSTIN
CREW: SW AUSTIN

U.S. PUBLIC LAND SURVEY MONUMENT RECORD - GRANT COUNTY, WI

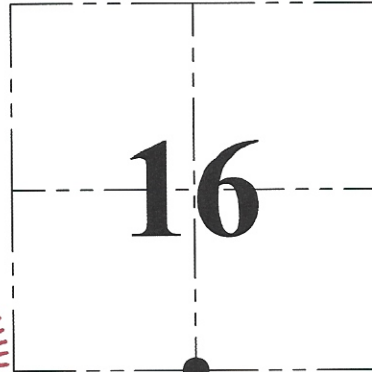
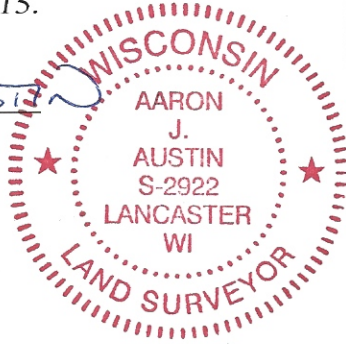
Section 17, Town 5 North Range 6 West, Town of Wyalusing

CERTIFICATE:

I, Aaron J. Austin, do hereby certify that the corner location on this record was determined by me and/or under my direct supervision and that this U.S. Public Land Survey Monument Record is correct and complete to the best of my knowledge and belief.

Dated this 19th day of January, 2015.

Aaron J. Austin
 Aaron J. Austin, S-2922



● = CORNER LOCATION

HISTORY OF CORNER ESTABLISHMENT:

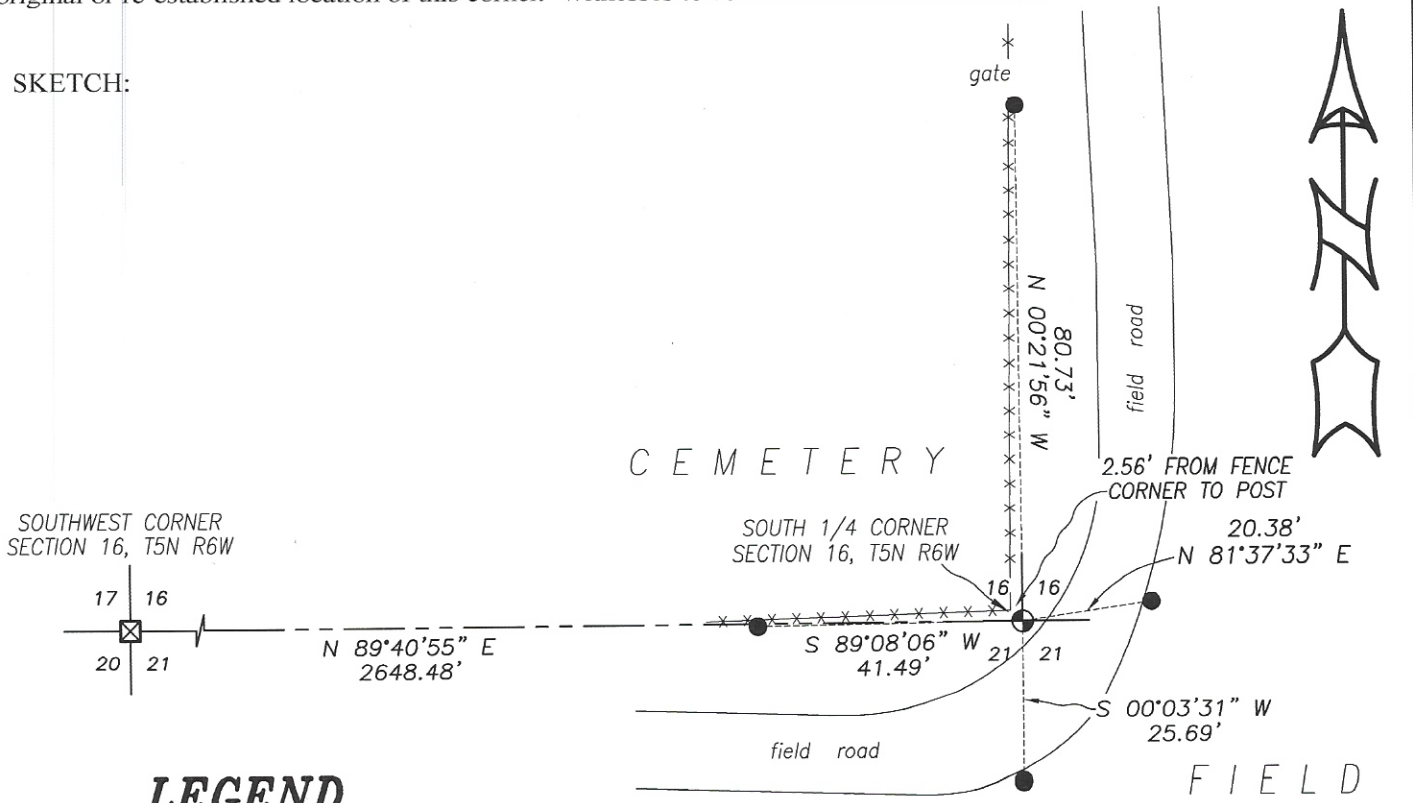
1832-Robert Clark set original corner.
 1883-J.C. Scott tied to the corner on surveys in Book D, Page 148 and 149.
 Several more recent surveys have accepted a Stone as the corner.

DESCRIPTION OF CORNER EVIDENCE FOUND:

I found a 9" x 12" pointed Stone with ribbon 24" below the surface of the ground.
 I set 4 ties and verified this location by E.D.M. and G.P.S. methods.

DESCRIPTION OF CORNER AND WITNESS MONUMENTS, references and accessories used to perpetuate the original or re-established location of this corner. Witnesses to corner location Shane Austin.

SKETCH:



LEGEND

- ⊕ 9" x 12" Pointed Stone found
- ⊠ 12" x 12" Pointed Stone found
- No. 4 x 12" rebar set with red plastic "tie" cap
- x-x- Existing fence

