

# U.S. PUBLIC LAND SURVEY MONUMENT RECORD

Section 14, Town 5 North Range 6 West, Town of Wyalusing, Grant County, Wisconsin

## CERTIFICATE

I, Aaron J. Austin, do hereby certify that the corner location on this record was determined by me and/or under my direct supervision and that this U.S. public land survey monument record is correct and complete to the best of my knowledge and belief.

*Aaron J. Austin*  
 Aaron J. Austin, S-2922



date 1-12-11



● = CORNER LOCATION

## HISTORY OF CORNER

Corner was originally set in 1832 by Robert Clark. No other record of the corner was found.

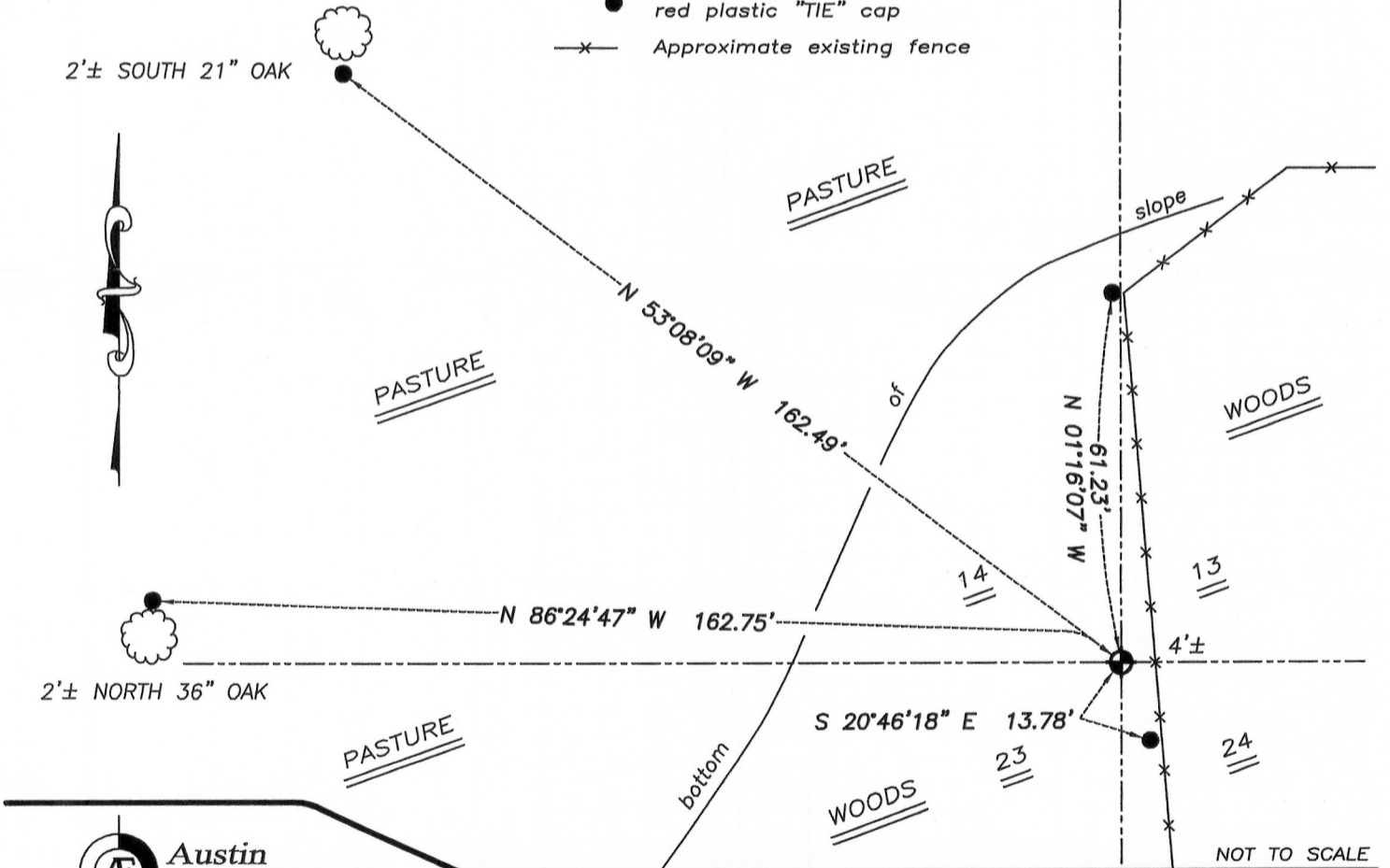
## CORNER EVIDENCE FOUND

I reset the corner proportionately between the Northeast corner of Section 14, and Southeast corner of Section 23. Verified this location using EDM & GPS methods.

**DESCRIPTION OF CORNER AND WITNESS MONUMENTS**, references and accessories used to perpetuate the original or reestablished location of this corner. Witnesses to monument location Bobby Sedgwick & Brad Digman & Shelby Blindert

## SKETCH:

- LEGEND**
- ⊕ Number 8 x 30" rebar set with Grant County Aluminum cap
  - Number 4 x 24" Rebar set with red plastic "TIE" cap
  - x- Approximate existing fence



**Austin Engineering LLC**  
 austinengineeringllc.com  
 4211 HWY 81 E, LANCASTER, WI 53813  
 PHONE: 608-723-6363 FAX: 608-723-6702

JOB NUMBER 10S286-GILES  
 FIELDBOOK: TDSR, 10-00  
 G:\T5NR6W\14  
 H:\TIE\T5NR6W\63

DRAWN BY: SW AUSTIN  
 APPROVED: AJ AUSTIN