

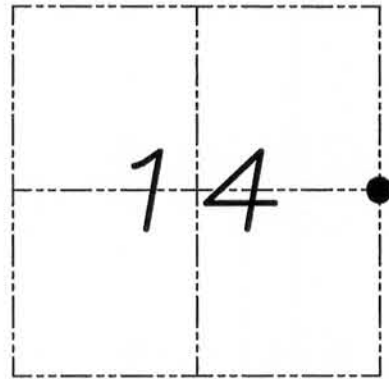
U.S. PUBLIC LAND SURVEY MONUMENT RECORD

Section 14, Town 5 North Range 6 West, Town of Wyalusing, Grant County, Wisconsin

CERTIFICATE

I, Aaron J. Austin, do hereby certify that the corner location on this record was determined by me and/or under my direct supervision and that this U.S. public land survey monument record is correct and complete to the best of my knowledge and belief.

Aaron J. Austin
 Aaron J. Austin, S-2922
 date 1-12-11



● = CORNER LOCATION

HISTORY OF CORNER

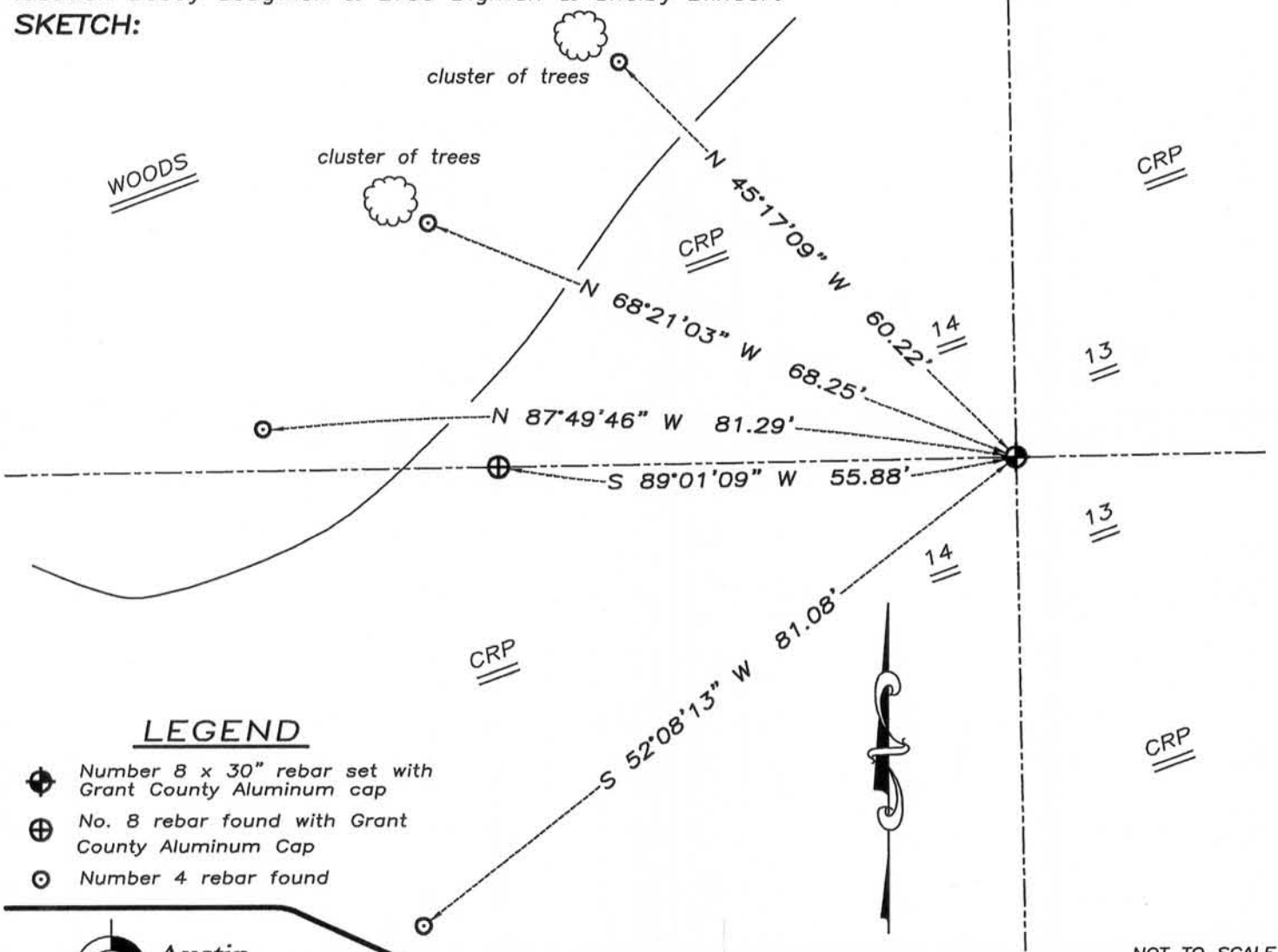
Corner was originally set in 1832 by Robert Clark. Larry Austin set the corner in 1999 and filed a tiesheet. No other record of the corner was found.

CORNER EVIDENCE FOUND

I found Larry Austin's corner and did not accept it. I reset the corner on-line between the Northeast and Southeast corners. Verified this location using EDM & GPS methods.

DESCRIPTION OF CORNER AND WITNESS MONUMENTS, references and accessories used to perpetuate the original or reestablished location of this corner. Witnesses to monument location Bobby Sedgwick & Brad Digman & Shelby Blindert

SKETCH:



LEGEND

- ⊕ Number 8 x 30" rebar set with Grant County Aluminum cap
- ⊕ No. 8 rebar found with Grant County Aluminum Cap
- Number 4 rebar found

NOT TO SCALE

Austin Engineering LLC
 austinengineeringllc.com
 4211 HWY 81 E, LANCASTER, WI 53813
 PHONE: 608-723-6363 FAX: 608-723-6702

JOB NUMBER 10S286-GILES
 FIELDBOOK: TDSR, 10-00
 G:\T5NR6W\14
 H:\TIE\T5NR6W\59

DRAWN BY: SW AUSTIN
 APPROVED: AJ AUSTIN

JAN 28 2011

GRANT COUNTY CERTIFIED LAND CORNER

CORNER NO. 59

CERTIFICATE:

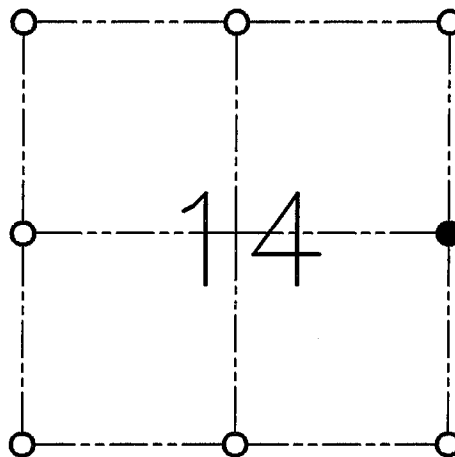
I, LARRY L. AUSTIN, DO HEREBY CERTIFY THAT ON SIXTEENTH DAY OF NOVEMBER, 1998, I FOUND NO EVIDENCE OF THE EAST 1/4 CORNER OF SECTION 14, TOWN 5 NORTH, RANGE 6 WEST, OF THE FOURTH PRINCIPAL MERIDIAN, AND I RE-ESTABLISHED SAID CORNER ACCORDING TO THE WISCONSIN STATUTES AS SHOWN AND DESCRIBED HEREON.

DATED THIS TWENTY-FIFTH DAY OF JANUARY, 1999

Larry L. Austin
LARRY L. AUSTIN S-1903



SEAL



● = CORNER LOCATION

**EAST 1/4 OF SECTION 14
T 5 N R 6 W
TOWN OF WYALUSING**

HISTORY OF ORIGINAL CORNER ESTABLISHMENT:

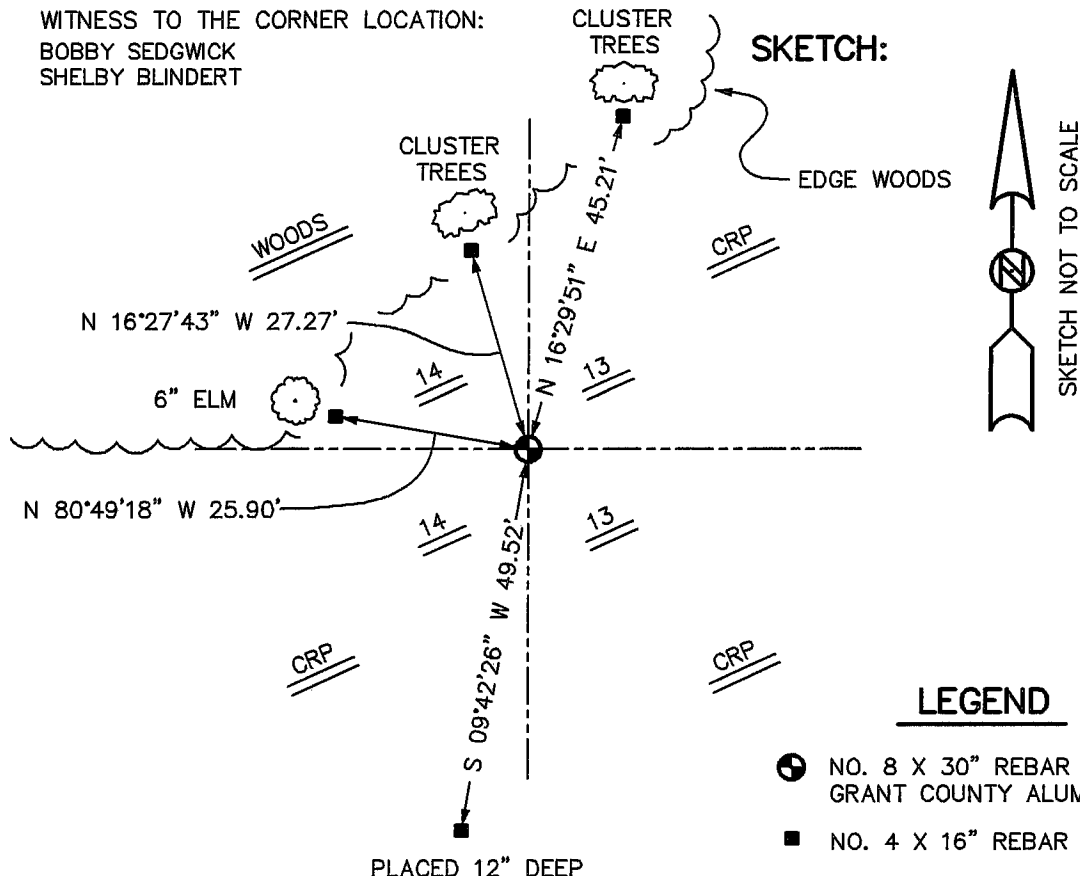
CORNER SET IN 1832 BY ROBERT CLARK.

DESCRIPTION OF CORNER EVIDENCE FOUND:

I SET THE CORNER ONLINE WITH THE FENCE TO THE SOUTH AND ONLINE WITH THE FENCE TO THE WEST. VERIFIED THIS LOCATION USING E.D.M. AND G.P.S. METHODS.

DESCRIPTION OF CORNER AND WITNESS MONUMENTS, REFERENCES AND ACCESSORIES USED TO PERPETUATE THE ORIGINAL OR RE-ESTABLISHED LOCATION OF THIS CORNER:

WITNESS TO THE CORNER LOCATION:
BOBBY SEDGWICK
SHELBY BLINDERT



LEGEND

- NO. 8 X 30" REBAR SET WITH GRANT COUNTY ALUMINUM CAP
- NO. 4 X 16" REBAR SET