


CERTIFIED LAND CORNER

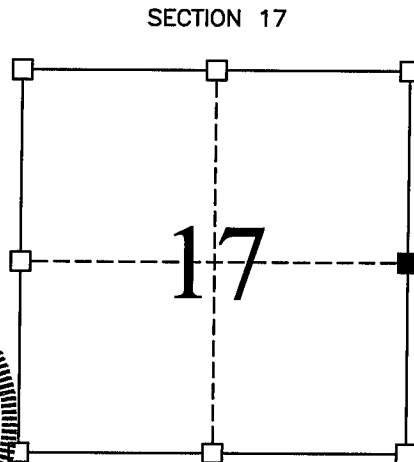
STATE OF WISCONSIN COUNTY OF GRANT

CERTIFICATE

I, Stanley J. King, do hereby certify that the corner location of this record was determined by me and/or under my direct supervision and that this U.S. public land survey monument record is correct and complete to the best of my knowledge and belief.

Dated this 3rd day of March, 2002


Stanley J. King S-2001



■ = Corner Location
T5N R6W
Town of: WYALUSING

Seal:

History of original corner establishment:

Original corner was set in 1832.
East 1/4 of Section 8 was set by Larry Austin in 1997.
Southeast Corner of Section 17 set by Homer Ralph.

Description of corner evidence found:

I found no evidence of the corner or its witness. Corner reset from the original plat to the Village of Bagley and by equal distance from the Southeast corner of Section 17 to the East 1/4 corner of Section 8. This was verified using EDM methods.

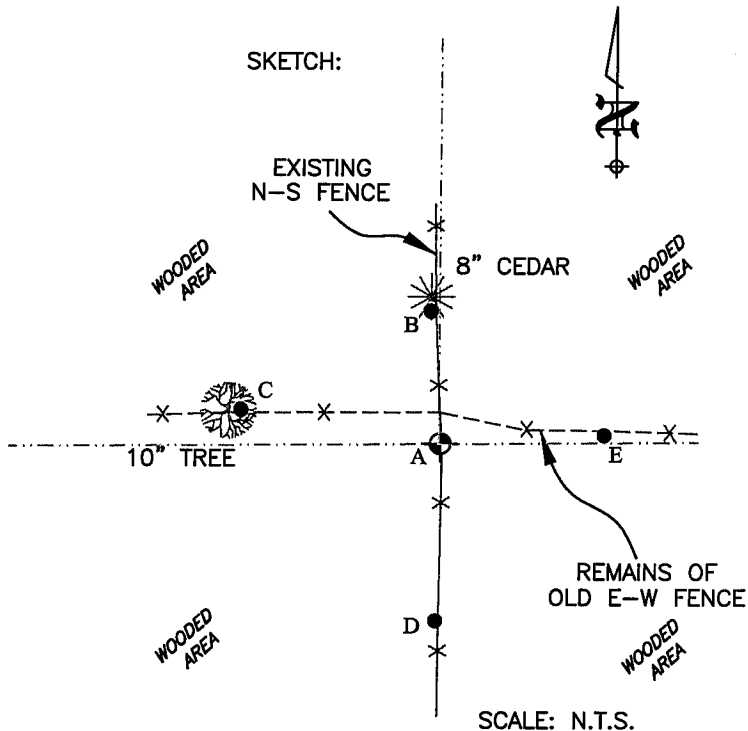
Description of corner and witness monuments, references, and accessories used to perpetuate the original or re-established location of this corner.

Witnesses to corner location:

- Jeff Brandt
- Chad Coyier
- Kathie Kobbervig

- ⊕ = SECTION CORNER
(GRANT COUNTY
ALUM. MONUMENT)
- = TIE BAR
3/4" BAR SET

- (A-B)=N 4°23'44" W 34.56'
- (A-C)=N 80°24'43" W 52.17'
- (A-D)=S 1°08'21" W 46.40'
- (A-E)=N 87°05'16" E 42.43'



BLACKHAWK
ENGINEERING, Ltd.

Civil & Municipal Engineers and Building Design
2 INSIGHT DRIVE OFFICE PHONE: (608) 348-4433
PLATTEVILLE, WISCONSIN FAX: (608) 348-4449

SURVEY CREW: DJD, SJK
DRAWN BY: DJD
DATE: JAN. 4, 2002
FILE: f:\acad12\2001\01-018\tiesheetnecor36.dwg