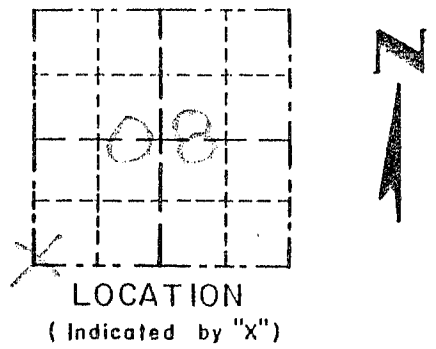


Survey Monument Record

TYPE OF MONUMENT 3/4" x 24" IRON
BAR SET

CORNER NO. 51
SECTION 08
TOWN 5N
RANGE 6W

FIELD BOOK: 96-06
PAGE (32)



BASIS FOR MONUMENT LOCATION

(Use reverse side if necessary)
Show info such as: History of corner, with reference to Vol. and pg., dates, surveyor; exact description of monument replaced; if location computed, by taped or EDM traverse; landowner, remarks, etc.

SEAL:

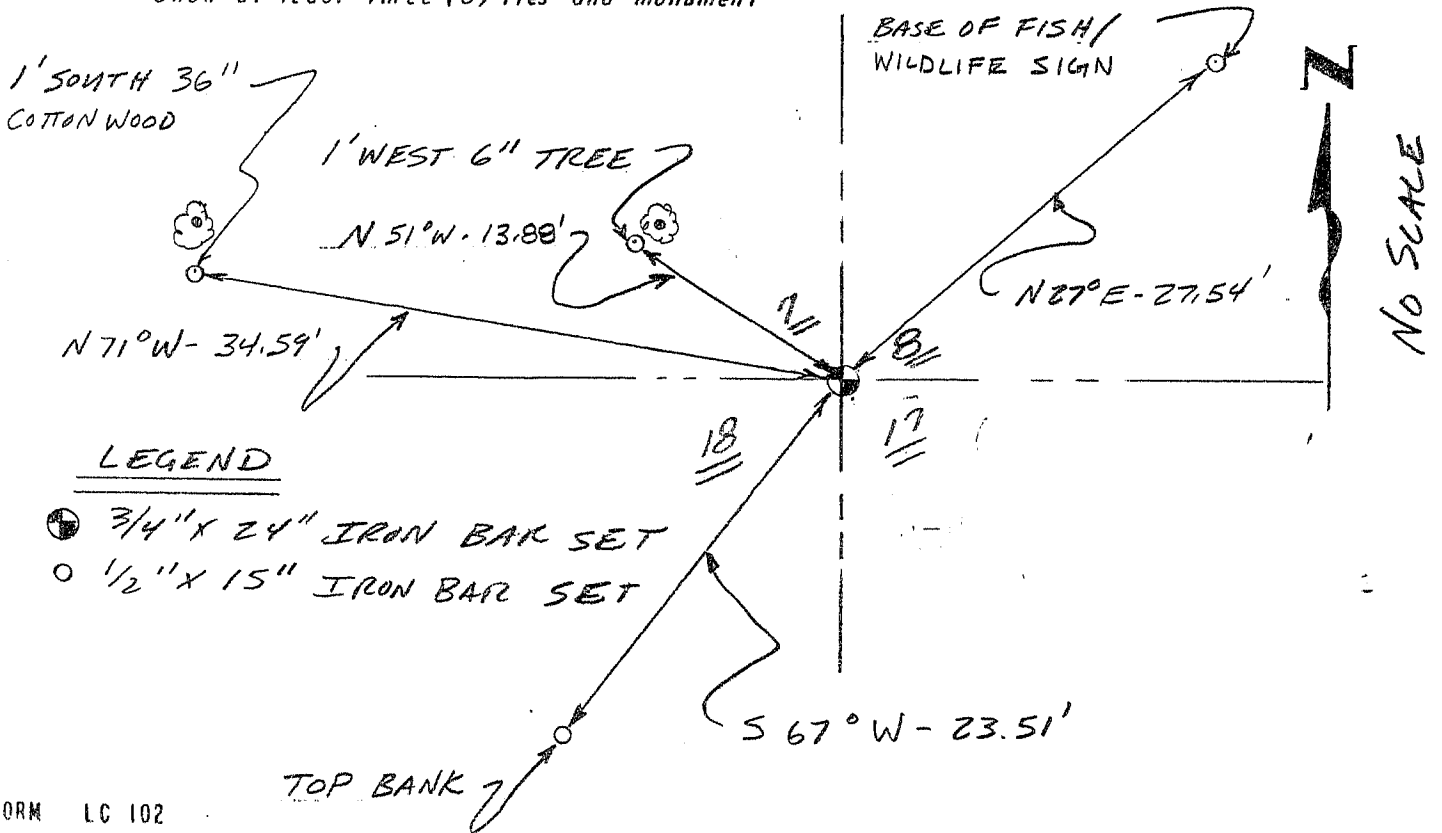


CORNER SET IN 1832
BY ROBERT CLARK. IN 1891
CHARLES SAMPSON SET
CORNERS BY RUNNING TO
FOUR ADJACENT CORNERS.
I SET THE CORNER
BASED ON THE DISTANCE
FROM THE SOUTH 1/4
CORNER (SAMPSON'S DISTANCE)
AND A PROJECTION OF
AN EXISTING EAST/WEST
FENCE FROM THE EAST.
VERIFIED THIS LOCATION
USING EDM METHODS.

CERTIFIED CORRECT
Randy R. [Signature]
Registered Land Surveyor
DATE: 12-20-97

TIE SKETCH

Show at least three (3) ties and monument



LEGEND

- 3/4" x 24" IRON BAR SET
- 1/2" x 15" IRON BAR SET