

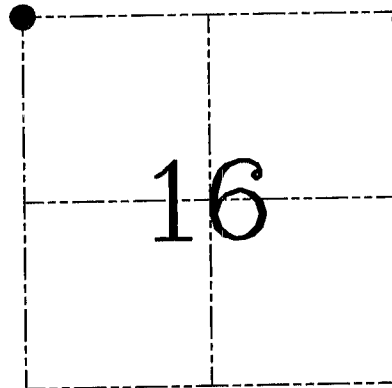
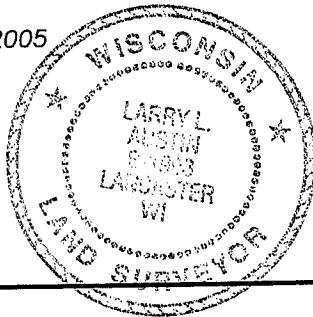
U.S. PUBLIC LAND SURVEY MONUMENT RECORD – GRANT COUNTY, WI
Section 16, Town 5 North Range 6 West, Town of Wyalusing

CERTIFICATE

I, Larry L. Austin, do hereby certify that the corner location on this record was determined by me and/or under my direct supervision and that this U.S. public land survey monument record is correct and complete to the best of my knowledge and belief.

Dated this 24th day of October, 2005

Larry L. Austin
 Larry L. Austin S-1903



● = CORNER LOCATION

HISTORY OF CORNER ESTABLISHMENT

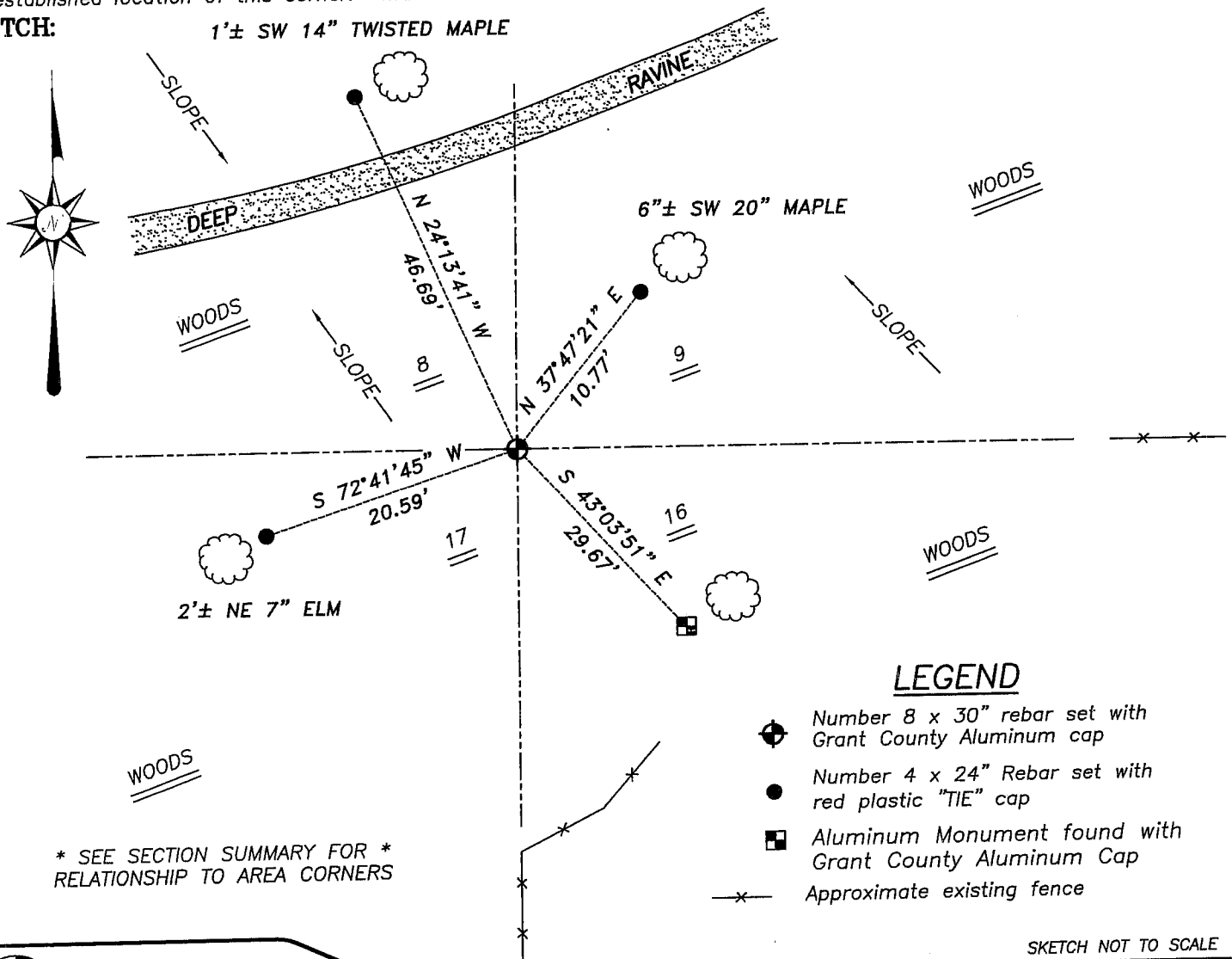
Corner was originally set in 1832 by Robert Clark. In 1871 McFall tied to the corner while performing a survey in the SE 1/4 of the SE 1/4. In 2002 Stan King set this corner. No other record of the corner was found.

DESCRIPTION OF CORNER EVIDENCE FOUND

I found King's monument and did not accept it's location. I reset the corner at a projection of existing fence from the East for Northing. Easting was established by doubling the North line of the NE 1/4 of the NW 1/4. This location fit occupied 40's well North and South of the corner. Verified this location using EDM & GPS methods.

DESCRIPTION OF CORNER AND WITNESS MONUMENTS, references and accessories used to perpetuate the original or re-established location of this corner. Witnesses to corner location Brad Digman & Shane Austin.

SKETCH:



LEGEND

- ⊕ Number 8 x 30" rebar set with Grant County Aluminum cap
- Number 4 x 24" Rebar set with red plastic "TIE" cap
- Aluminum Monument found with Grant County Aluminum Cap
- x- Approximate existing fence

* SEE SECTION SUMMARY FOR *
 RELATIONSHIP TO AREA CORNERS

SKETCH NOT TO SCALE



Austin Engineering LLC

4211 HWY 81 E, LANCASTER, WI 53813
 PHONE 608-723-6363 FAX 608-723-6702

JOB NUMBER 04S186
 FIELDBOOK: 2326
 G:\T5NR6W\14
 H:\TIE\T5NR6W\49

DRAWN BY: JP ADAMS
 APPROVED: LL AUSTIN

CERTIFIED LAND CORNER

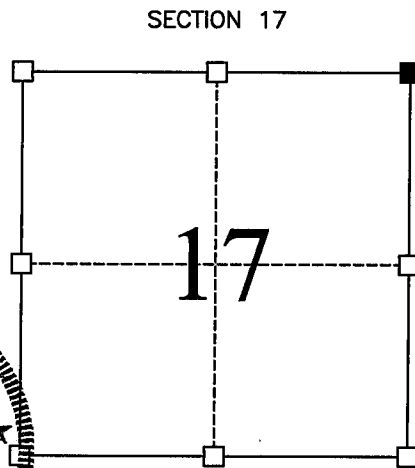
STATE OF WISCONSIN COUNTY OF GRANT

CERTIFICATE

I, Stanley J. King, do hereby certify that the corner location of this record was determined by me and/or under my direct supervision and that this U.S. public land survey monument record is correct and complete to the best of my knowledge and belief.

Dated this 3rd day of March, 2002


 Stanley J. King S-2001



■ = Corner Location
 T5N R6W
 Town of: WYALUSING

Seal:

History of original corner establishment:

Original corner was set in 1832. East 1/4 Section, 8 set by Larry Austin in 1997. East 1/4 Section 17 set by Stanley King in 2002.

Description of corner evidence found:

I found no evidence of the corner or its witness. Corner reset by single proportionate measurement between the East 1/4 of section 8 and the East 1/4 of Section 17. This was verified using EDM methods

Description of corner and witness monuments, references, and accessories used to perpetuate the original or re-established location of this corner.

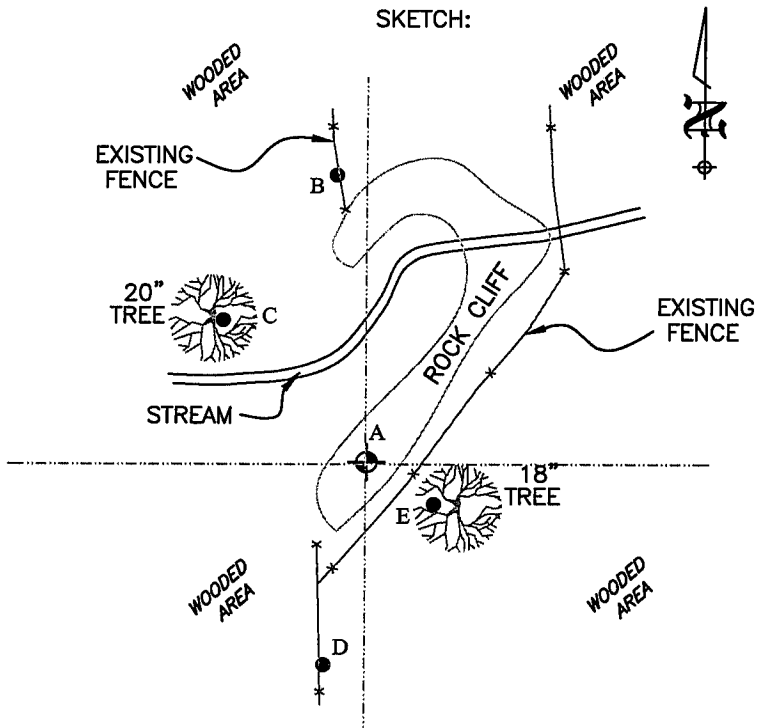
Witnesses to corner location:

Jeff Brandt
 Chad Coyier
 Kathie Kobbervig

- ⊕ = SECTION CORNER (GRANT COUNTY ALUM. MONUMENT)
- = TIE BAR 3/4" BAR SET

(A-B)=N 06°07'10" W 120.08'
 (A-C)=N 45°11'13" W 83.73'
 (A-D)=S 11°33'02" W 86.29'
 (A-E)=S 57°41'46" E 32.77'

SKETCH:



BLACKHAWK
ENGINEERING, Ltd.

Civil & Municipal Engineers and Building Design
 2 INSIGHT DRIVE OFFICE PHONE: (608) 348-4433
 PLATTEVILLE, WISCONSIN FAX: (608) 348-4449

SURVEY CREW: DJD, SJK
 DRAWN BY: DJD
 DATE: JAN. 4, 2002
 FILE: f:\acad12\2001\01-018\tiesheetmecor36.dwg