

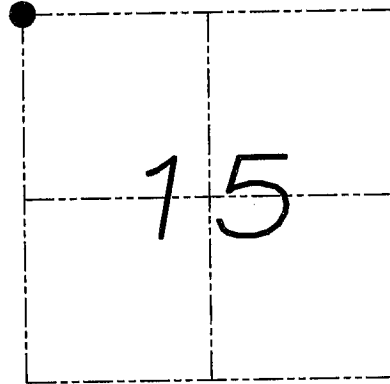
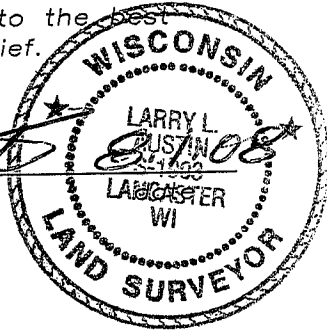
# U.S. PUBLIC LAND SURVEY MONUMENT RECORD

Section 15, Town 5 North Range 6 West,  
Wyalusing Township, Grant County, Wisconsin

## CERTIFICATE

I, Larry L. Austin, do hereby certify that the corner location on this record was determined by me and/or under my direct supervision and that this U.S. public land survey monument record is correct and complete to the best of my knowledge and belief.

*Larry L. Austin*  
Larry L. Austin, S-1903



● = CORNER LOCATION

## HISTORY OF CORNER

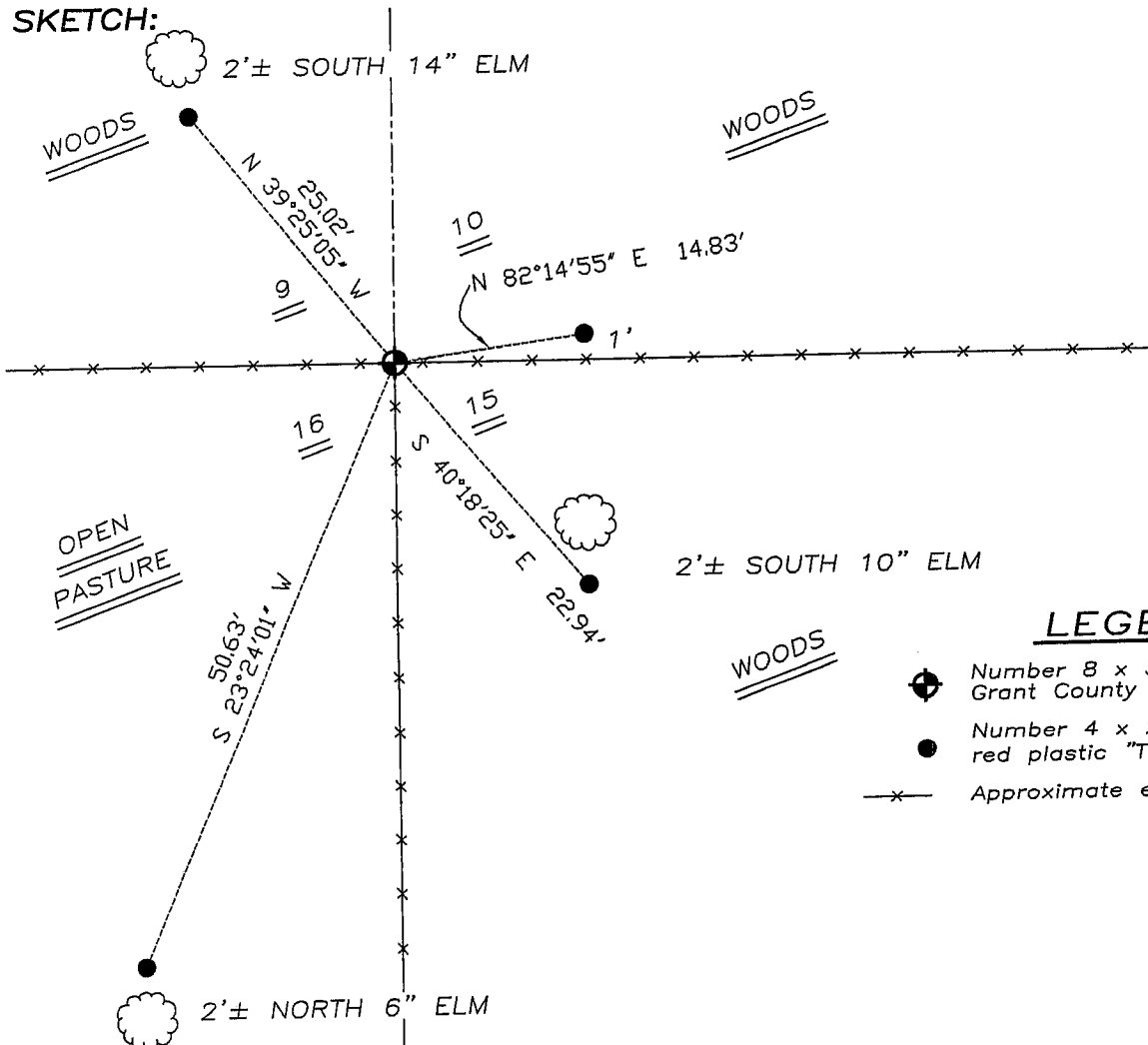
Corner was originally set in 1832 by Clark.  
No recent record of the corner was found.

## CORNER EVIDENCE FOUND

I reset the corner at the occupied fence corner.  
Verified this location using EDM & GPS methods.

DESCRIPTION OF CORNER AND WITNESS MONUMENTS, references and accessories used to perpetuate the original or re-established location of this corner. Witnesses to monument location Bobby Sedgwick & Brad Digman & Shelby Blindert

## SKETCH:



## LEGEND

- ⊕ Number 8 x 30" rebar set with Grant County Aluminum cap
- Number 4 x 24" Rebar set with red plastic "TIE" cap
- x- Approximate existing fence

NOT TO SCALE



**Austin**  
Engineering LLC

4211 HWY 81 E, LANCASTER, WI 53813  
PHONE 608-723-6363 FAX 608-723-6702

JOB NUMBER 08S039  
FIELDBOOK: TDSR,2809  
G:\T5NR6W\14  
H:\TIE\T5NR6W\47

DRAWN BY: BL STANFLEY  
APPROVED: LL AUSTIN

47