

GRANT COUNTY CERTIFIED LAND CORNER

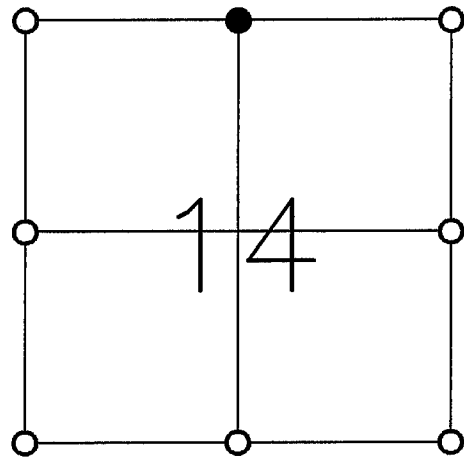
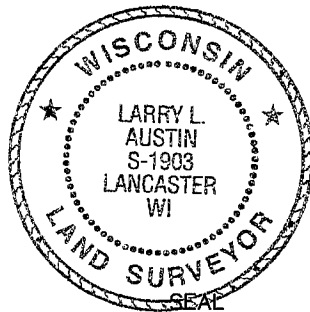
CORNER NO. 44

CERTIFICATE:

I, LARRY L. AUSTIN, DO HEREBY CERTIFY THAT ON SIXTEENTH DAY OF NOVEMBER, 1998, I FOUND OCCUPATIONAL EVIDENCE OF THE NORTH 1/4 OF SECTION 9, TOWN 7 NORTH, RANGE 3 WEST, OF THE FOURTH PRINCIPAL MERIDIAN, AND I RE-ESTABLISHED SAID CORNER ACCORDING TO THE WISCONSIN STATUTES AS SHOWN AND DESCRIBED HEREON.

DATED THIS TWENTY-SECOND DAY OF JANUARY, 1999

Larry L. Austin
LARRY L. AUSTIN S-1903



● = CORNER LOCATION

**NORTH 1/4 OF SECTION 14
T 5 N R 6 W
TOWN OF WYALUSING**

HISTORY OF ORIGINAL CORNER ESTABLISHMENT:

CORNER SET IN 1832 BY ROBERT CLARK.

DESCRIPTION OF CORNER EVIDENCE FOUND:

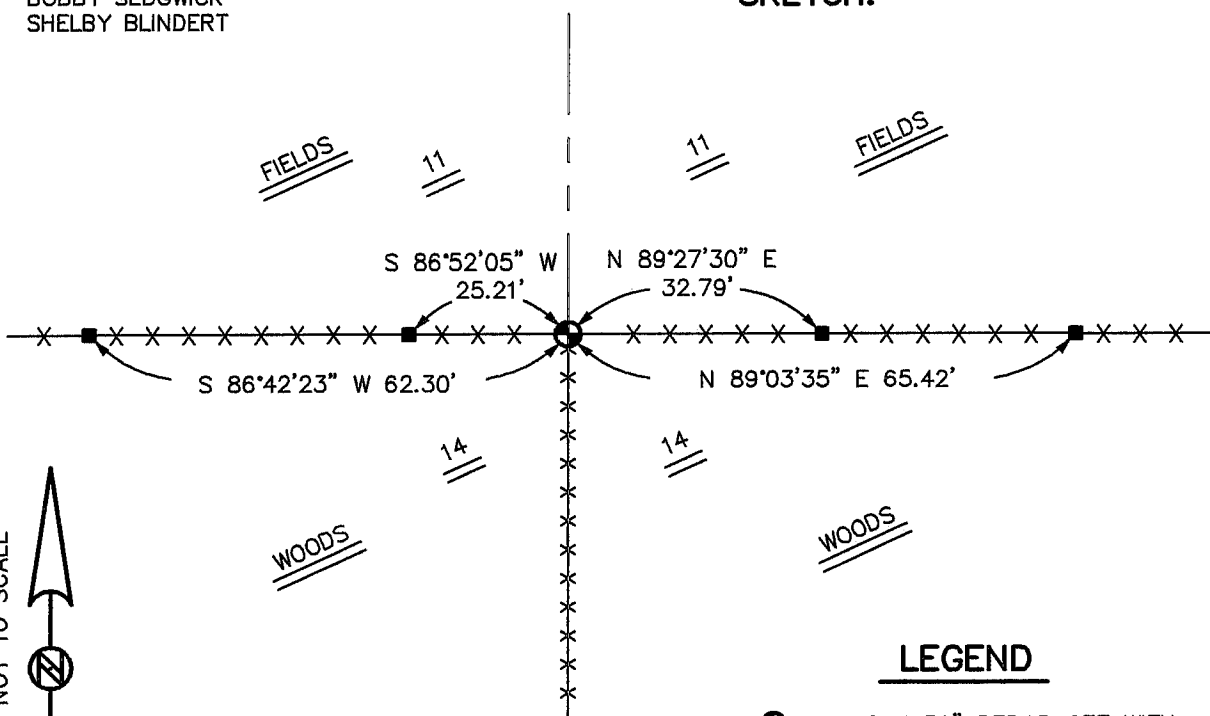
I FOUND AN OCCUPIED FENCE CORNER AND ACCEPTED IT'S LOCATION AFTER MEASURING TO CORNERS IN THE AREA. VERIFIED THIS LOCATION USING E.D.M. AND G.P.S. METHODS.

DESCRIPTION OF CORNER AND WITNESS MONUMENTS, REFERENCES AND ACCESSORIES USED TO PERPETUATE THE ORIGINAL OR RE-ESTABLISHED LOCATION OF THIS CORNER:

WITNESS TO THE CORNER LOCATION:

BOBBY SEDGWICK
SHELBY BLINDERT

SKETCH:



LEGEND

- NO. 8 X 30" REBAR SET WITH GRANT COUNTY ALUMINUM CAP
- NO. 4 X 16" REBAR SET
- *-* EXISTING FENCE