

GRANT COUNTY CERTIFIED LAND CORNER

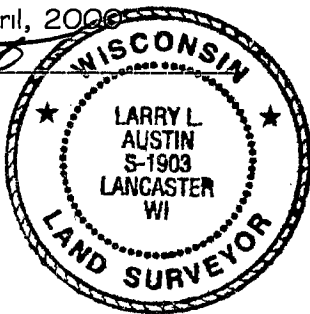
CORNER NUMBER 38

CERTIFICATE:

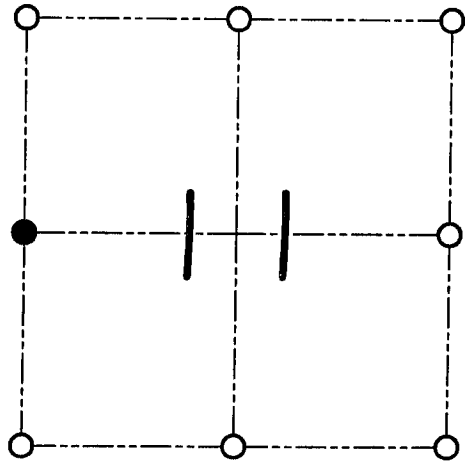
I, Larry L. Austin, do hereby certify that on the 25th day of April, 2000, I found evidence of the corner of Section 11, Town 5 North, Range 6 West, of the 4th Principal Meridian, and I re-established said corner according to the Wisconsin statutes as shown and described hereon.

Dated this 28th day of April, 2000

Larry L. Austin
Larry L. Austin S-1903



SEAL



● = CORNER LOCATION

WEST 1/4 CORNER OF
SECTION 11, T 5 N R 6 W
TOWN OF WYALUSING

HISTORY OF ORIGINAL CORNER ESTABLISHMENT:

Corner was originally set in 1832 by Robert Clark.
In 1878 Joel Barber found the corner.

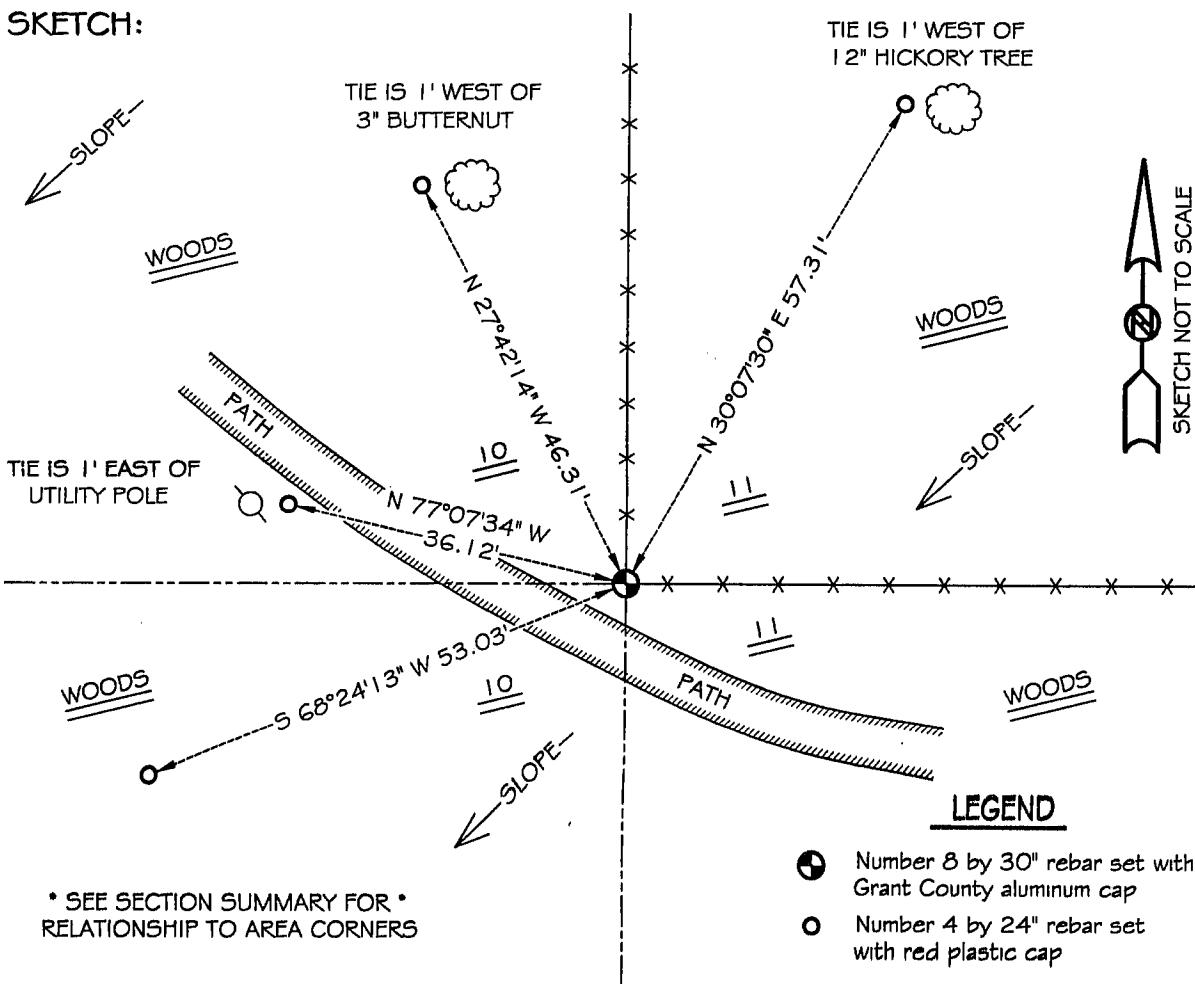
DESCRIPTION OF CORNER EVIDENCE FOUND:

I found an existing fence corner and accepted it's location
after an E.D.M. & G.P.S. traverse of the area.

DESCRIPTION OF CORNER AND WITNESS MONUMENTS, references and accessories used to perpetuate the original or re-established location of this corner

WITNESS TO THE CORNER LOCATION: SHELBY BLINDERT & BOBBY SEDGWICK

SKETCH:



* SEE SECTION SUMMARY FOR *
RELATIONSHIP TO AREA CORNERS

LEGEND

- Number 8 by 30" rebar set with Grant County aluminum cap
- Number 4 by 24" rebar set with red plastic cap
- x— Existing fence location