

U.S. PUBLIC LAND SURVEY MONUMENT RECORD - GRANT COUNTY, WI

Section 10, Town 5 North Range 6 West, Town of Wyalusing (a)

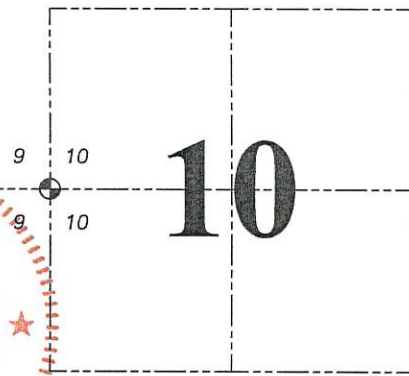
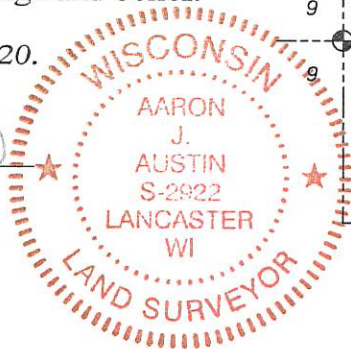
NOTE: This form is intended and designed to fulfill all requirements of the Wisconsin Administrative Code Chapter A-E 7.08, U.S. Public Land Survey Monument Record (3) (a) (b) (c) (d) (e) (f) (g) (h) (i).

CERTIFICATE: (i)

I, Aaron J. Austin, Wisconsin Professional Land Surveyor, do hereby certify that the corner location on this record was determined by me and/or under my direct supervision and that this U.S. Public Land Survey Monument Record is correct and complete to the best of my knowledge and belief.

Dated this 12th day of October, 2020.

Aaron J Austin
Aaron J. Austin, S-2922



⊕ = CORNER LOCATION

Grant County Coordinates:
NAD 83 (2011)
Northing: 551,013.84
Easting: 719,661.12

HISTORY OF CORNER ESTABLISHMENT:

Original corner was set in 1832 by Robert Clark.
Larry Austin set a 1" rebar with a Grant County Cap and prepared a Survey Monument Record dated 2/28/2007.

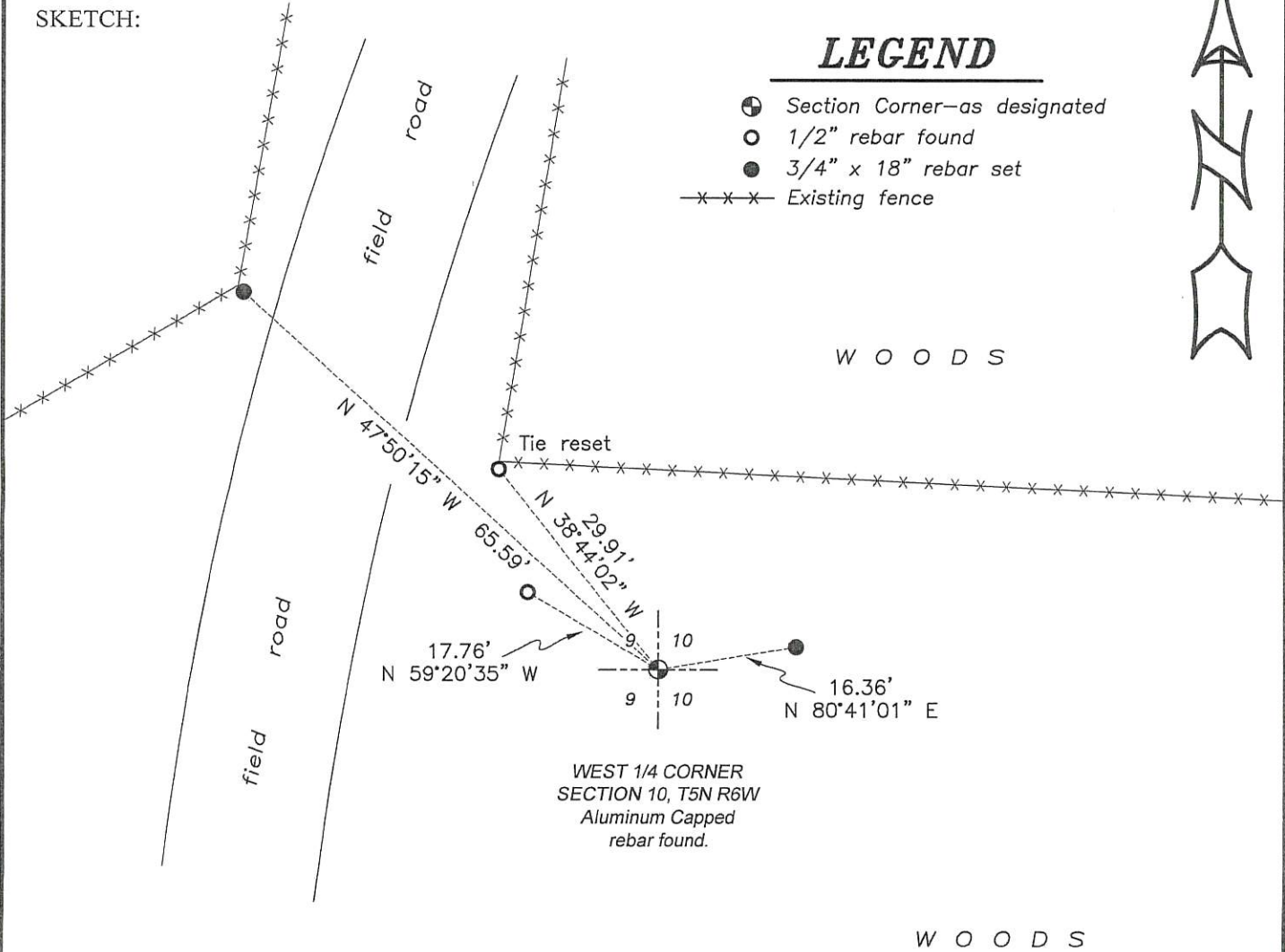
DESCRIPTION OF CORNER EVIDENCE FOUND: (b) (f) (g) (h)

I found the Aluminum Capped rebar and two witness corners Larry set. I set two witness corners after I verified the Monument's location with G.P.S. and E.D.M. methods.

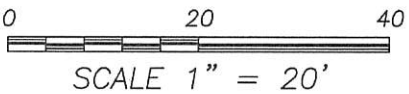
DESCRIPTION OF CORNER AND WITNESS MONUMENTS, references and accessories used to perpetuate the original or re-established location of this corner. (c) (d) (e)

Witnesses to corner location Shane Austin.
Drawn by Owen Austin

SKETCH:



- LEGEND**
- ⊕ Section Corner—as designated
 - 1/2" rebar found
 - 3/4" x 18" rebar set
 - x-x-x- Existing fence



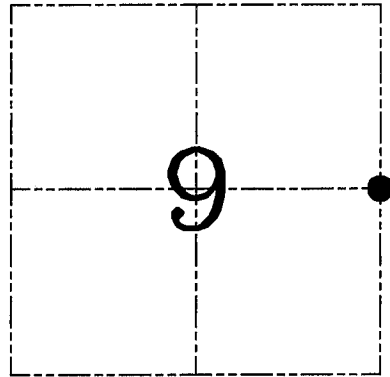
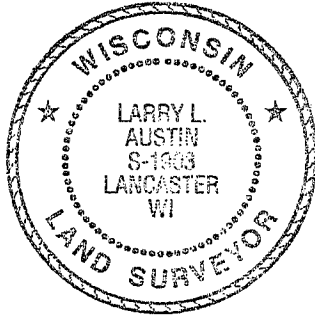
SCALE 1" = 20'

U.S. PUBLIC LAND SURVEY MONUMENT RECORD – GRANT COUNTY, WI

Section 9, Town 5 North Range 6 West, Town of Wyalusing

CERTIFICATE

I, Larry L. Austin, do hereby certify that the corner location on this record was determined by me and/or under my direct supervision and that this U.S. public land survey monument record is correct and complete to the best of my knowledge and belief.



● = CORNER LOCATION

Larry L. Austin 2.28.07
 Larry L. Austin, S-1903 date

HISTORY OF CORNER ESTABLISHMENT

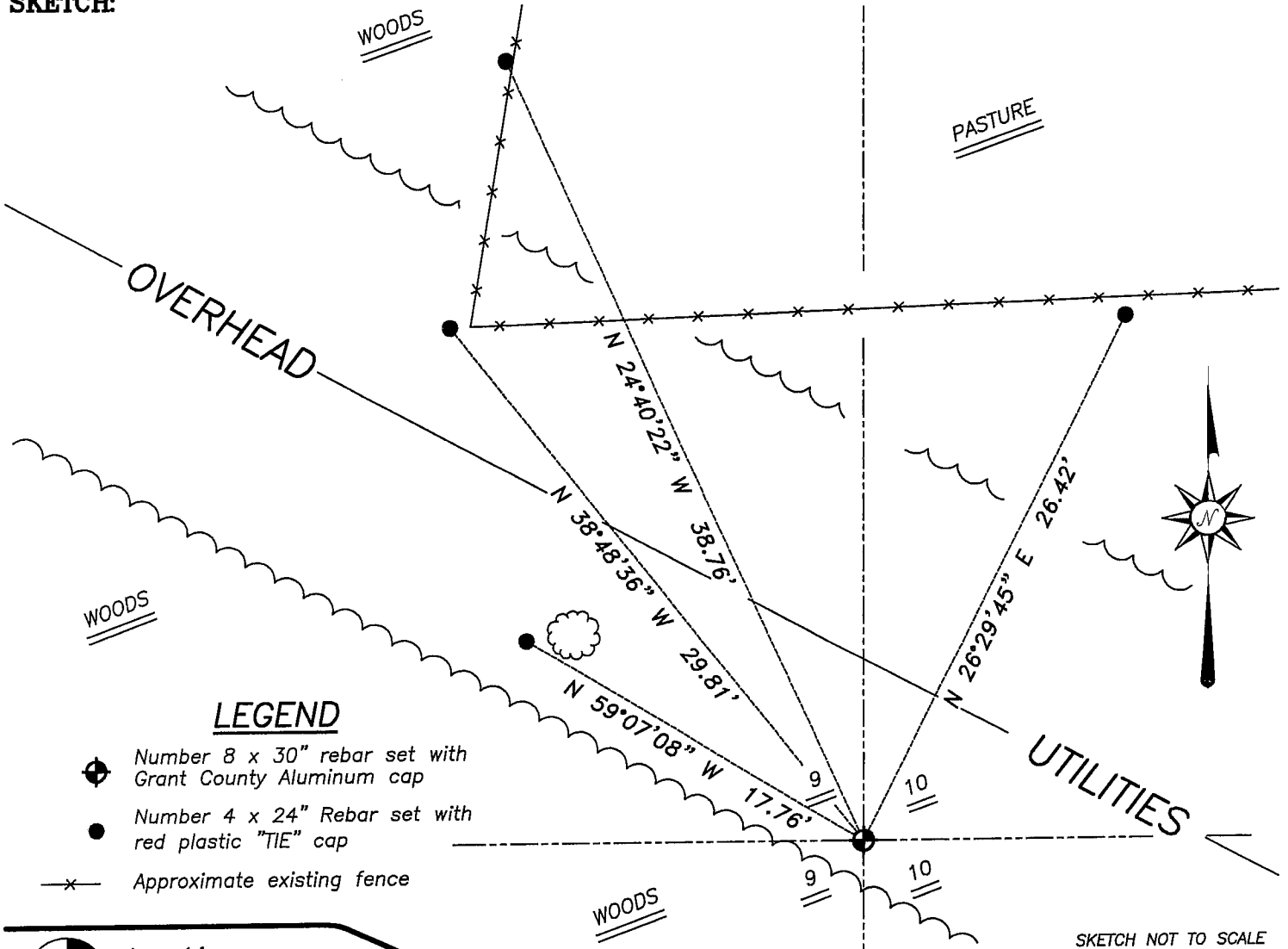
Corner was originally set in 1832 by Robert Clark.
 No other record of the corner was found.

DESCRIPTION OF CORNER EVIDENCE FOUND

I reset the corner proportionately and on-line between the Northeast corner and the occupied Southeast corner of Section 9. Verified this location using EDM & GPS methods.

DESCRIPTION OF CORNER AND WITNESS MONUMENTS, references and accessories used to perpetuate the original or re-established location of this corner. Witnesses to corner location Bobby Sedgwick & Brad Digman & Shane Austin

SKETCH:



LEGEND

- Number 8 x 30" rebar set with Grant County Aluminum cap
- Number 4 x 24" Rebar set with red plastic "TIE" cap
- x- Approximate existing fence

SKETCH NOT TO SCALE



Austin Engineering LLC

4211 HWY 81 E, LANCASTER, WI 53813
 PHONE 608-723-6363 FAX 608-723-6702

JOB NUMBER 06S131
 FIELDBOOK: TDSR, 2602A
 G:\T6NR6W\33A
 H:\TIE\T5NR6W\37

DRAWN BY: SW AUSTIN
 APPROVED: LL AUSTIN