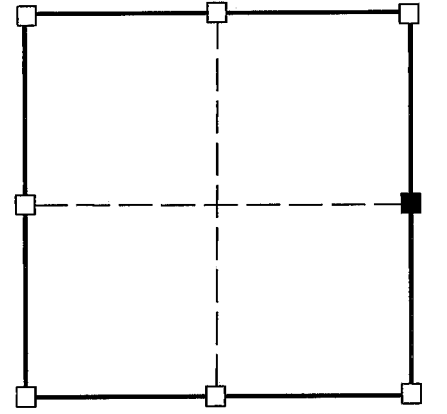
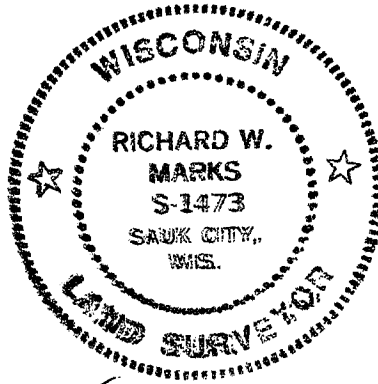


U.S. PUBLIC LAND SURVEY MONUMENT RECORD - GRANT COUNTY, WI

(a) Corner location:

Township 5 North
 Range 6 West
 Town of Wyalusing

I, Richard Marks certify that the corner location on this record was determined by me and that this U.S. public land survey monument record is correct and complete to the best of my knowledge and belief.



■ = corner location

Section 7



Dated this 11th day of April, 2000

Richard Marks

Richard Marks R.L.S. # S-1473

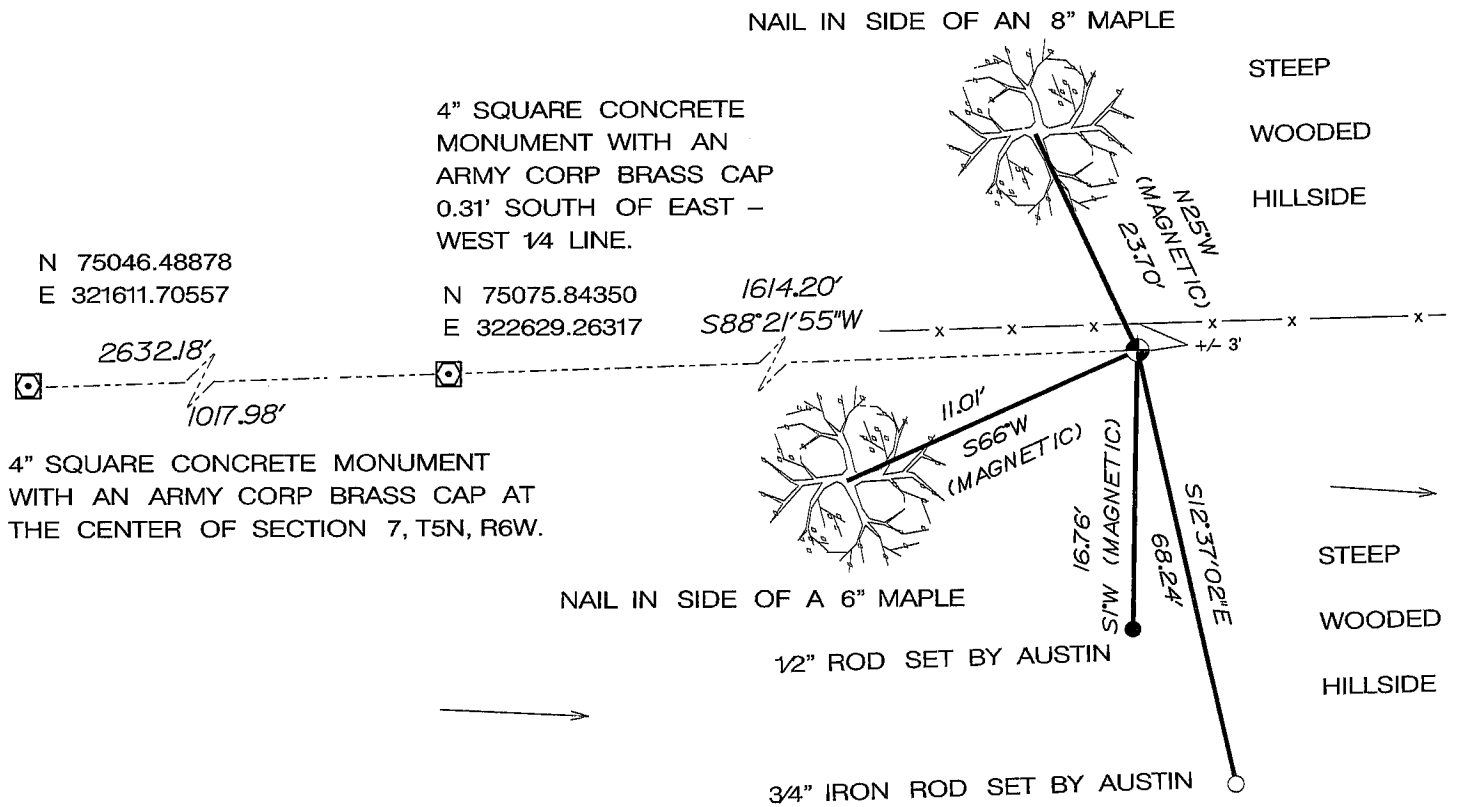
History of corner establishment:

Original survey was done by Robert Clark in 1832. Joel Barber set a stone at this corner in 1878. In 1891 Charles Sampson found the stone and used location although he had doubts of its correctness. In 1936 the surveyor's from the U. S. Army Corp of Engineers used the stone in subdividing Section 7.

Description of corner evidence found:

I found and used a stone standing upright at the corner. The location was verified by 4" square concrete monuments set by the Army Corp of Engineers along the East - West quarter line.

Description of corner and witness monuments, references and accessories used to perpetuate the original or re-established location of this corner.



Control: COMBINATION OF GPS AND CONVENTIONAL FIELD CONTROL

Datum: WHP NETWORK		County coordinates		State plane coordinates (1983 NAD)	
Lat.		North	N 551014.14358	North	
Long.		East	E 709039.54655	East	

Survey Monument Record

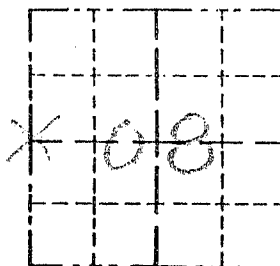
TYPE OF MONUMENT 3/4" x 24" IRON

BAR SET

CORNER NO. 35
 SECTION 08
 TOWN 5N
 RANGE 6W

FIELD BOOK: 96-06

PAGE 32



LOCATION
(Indicated by "X")

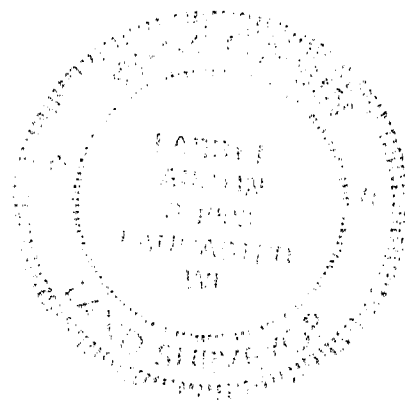
BASIS FOR MONUMENT LOCATION

(Use reverse side if necessary)

Show info such as: History of corner, with reference to Vol. and pg., dates, surveyor; exact description of monument replaced; if location computed, by taped or EDM traverse; landowner, remarks, etc.

SEAL:

CORNER SET IN 1832 BY ROBERT CLARK. IN 1878 JOEL BARBER MEASURED TO CORNER. IN 1891 CHARLES SAMPSON FOUND STONE SET BY PREVIOUS SURVEYOR & QUESTIONED LOCATION OF IT. I FOUND THE STONE AND DID NOT ACCEPT ITS LOCATION; I SET THE CORNER MIDWAY BETWEEN THE NORTHWEST AND THE SOUTHWEST CORNERS. VERIFIED THIS LOCATION USING EDM METHODS.



CERTIFIED CORRECT

Glenn J. Rust
 Registered Land Surveyor

DATE: 12-20-97

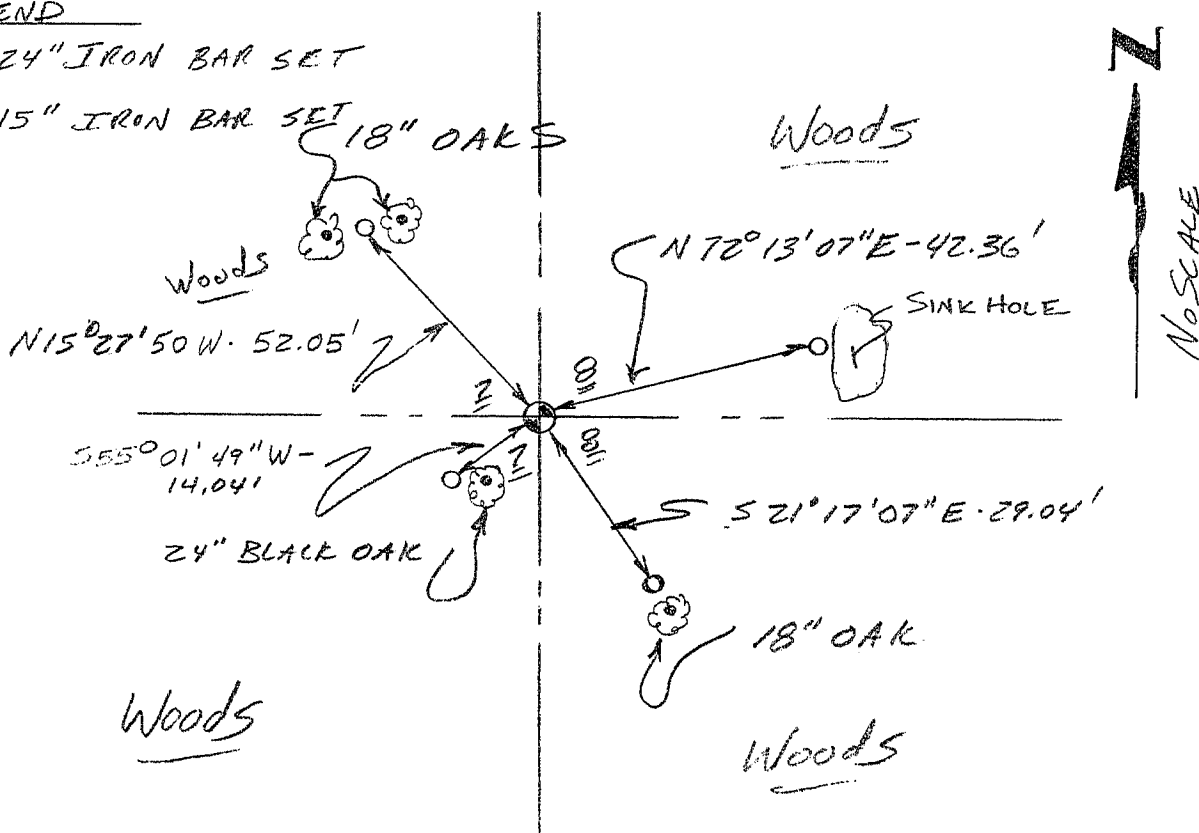
TIE SKETCH

Show at least three (3) ties and monument

LEGEND

● 3/4" x 24" IRON BAR SET

○ 1/2" x 15" IRON BAR SET



No SCALE